

Боксы для хранения

Технические характеристики

По вопросам продаж и поддержки обращайтесь:

Алматы (727)345-47-04
Ангарск (3955)60-70-56
Архангельск (8182)63-90-72
Астрахань (8512)99-46-04
Барнаул (3852)73-04-60
Белгород (4722)40-23-64
Благовещенск (4162)22-76-07
Брянск (4832)59-03-52
Владивосток (423)249-28-31
Владикавказ (8672)28-90-48
Владимир (4922)49-43-18
Волгоград (844)278-03-48
Вологда (8172)26-41-59
Воронеж (473)204-51-73
Екатеринбург (343)384-55-89

Иваново (4932)77-34-06
Ижевск (3412)26-03-58
Иркутск (395)279-98-46
Казань (843)206-01-48
Калининград (4012)72-03-81
Калуга (4842)92-23-67
Кемерово (3842)65-04-62
Киров (8332)68-02-04
Коломна (4966)23-41-49
Кострома (4942)77-07-48
Краснодар (861)203-40-90
Красноярск (391)204-63-61
Курск (4712)77-13-04
Курган (3522)50-90-47
Липецк (4742)52-20-81

Магнитогорск (3519)55-03-13
Москва (495)268-04-70
Мурманск (8152)59-64-93
Набережные Челны (8552)20-53-41
Нижний Новгород (831)429-08-12
Новокузнецк (3843)20-46-81
Ноябрьск (3496)41-32-12
Новосибирск (383)227-86-73
Омск (3812)21-46-40
Орел (4862)44-53-42
Оренбург (3532)37-68-04
Пенза (8412)22-31-16
Петрозаводск (8142)55-98-37
Псков (8112)59-10-37
Пермь (342)205-81-47

Ростов-на-Дону (863)308-18-15
Рязань (4912)46-61-64
Самара (846)206-03-16
Санкт-Петербург (812)309-46-40
Саратов (845)249-38-78
Севастополь (8692)22-31-93
Саранск (8342)22-96-24
Симферополь (3652)67-13-56
Смоленск (4812)29-41-54
Сочи (862)225-72-31
Ставрополь (8652)20-65-13
Сургут (3462)77-98-35
Сыктывкар (8212)25-95-17
Тамбов (4752)50-40-97
Тверь (4822)63-31-35

Тольятти (8482)63-91-07
Томск (3822)98-41-53
Тула (4872)33-79-87
Тюмень (3452)66-21-18
Ульяновск (8422)24-23-59
Улан-Удэ (3012)59-97-51
Уфа (347)229-48-12
Хабаровск (4212)92-98-04
Чебоксары (8352)28-53-07
Челябинск (351)202-03-61
Череповец (8202)49-02-64
Чита (3022)38-34-83
Якутск (4112)23-90-97
Ярославль (4852)69-52-93

Россия +7(495)268-04-70

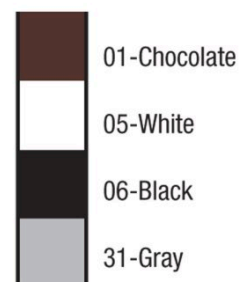
Казахстан +7(727)345-47-04

Беларусь +(375)257-127-884

Узбекистан +998(71)205-18-59

Киргизия +996(312)96-26-47

эл.почта: vha@nt-rt.ru || сайт: <https://vollrath.nt-rt.ru/>



Bus Boxes

Bus Boxes

PRODUCT SPECIFICATIONS

Model Information

UPC	029419885862
-----	--------------

Unit Dimensions

Overall Dimensions (IN)	21.75 x 15.625 x 5
(W) Width (IN)	21.75
(D) Depth (IN)	15.62
(H) Height (IN)	5

(W) Width (CM)	55.2
(D) Depth (CM)	39.5
(H) Height (CM)	12.7

Construction

Color	Brown
-------	-------

Case Lot Measurement

Case Lot	12
Case Width	15.94
Case Height	23.63
Case Length	21.81
Case Lot Cube (ft.)	3.22
Case Lot Weight (lbs.)	25.52

PRODUCT **ACCESSORIES**

Name	Item #
Dish Box Covers	1522-01



5-inch-deep Traex® bus box in white

Durable and reliable, the Traex bus box by Vollrath is sure to impress. The high-density polyethylene material, strong handles and reinforced ribs resist wear and extend the life of the unit. Approved for high and low temperatures, this versatile bus box can be used in a variety of applications. Stacking lugs prevent this box from sticking with others and shorten drying times, ensuring that this sturdy bus box is always ready for hard work.

Approved for temperatures between
-30°F and 180°F

High-density polyethylene material
lasts for years

Reinforced handles and ribs on the top
and bottom improve durability

Stacking lugs prevent box from sticking
with others and shorten drying times

NSF-certified for food contact

PRODUCT SPECIFICATIONS

Model Information

UPC

029419885879

Unit Dimensions

Overall Dimensions (IN)

21.75 x 15.625 x 5

(W) Width (IN)

21.75

(D) Depth (IN)

15.62

(H) Height (IN)

5

(W) Width (CM)

55.2

(D) Depth (CM)

39.5

(H) Height (CM)

12.7

Construction

Color

White

Case Lot Measurement

Case Lot

12

Case Width

16

Case Height

14.37

Case Length

21.12

Case Lot Cube (ft.)

2.79

Case Lot Weight (lbs.)

25.52

PRODUCT ACCESSORIES

Name

Item #

Dish Box Covers

1522-05



Bus Boxes

Bus Boxes

PRODUCT SPECIFICATIONS

Model Information

UPC

029419885886

Unit Dimensions

Overall Dimensions (IN)	21.75 x 15.625 x 5
(W) Width (IN)	21.75
(D) Depth (IN)	15.62
(H) Height (IN)	5
(W) Width (CM)	55.2
(D) Depth (CM)	39.5
(H) Height (CM)	12.7

Construction

Color	Black
-------	-------

Case Lot Measurement

Case Lot	12
Case Width	16
Case Height	14.37
Case Length	21.12
Case Lot Cube (ft.)	4.66
Case Lot Weight (lbs.)	25.52

PRODUCT ACCESSORIES

Name	Item #
Traex® bus box cover in black	1522-06



Bus Boxes

Bus Boxes

PRODUCT SPECIFICATIONS

Model Information

UPC

029419885893

Unit Dimensions

Overall Dimensions (IN)	21.75 x 15.625 x 5
(W) Width (IN)	21.75
(D) Depth (IN)	15.62
(H) Height (IN)	5
(W) Width (CM)	55.2
(D) Depth (CM)	39.5
(H) Height (CM)	12.7

Construction

Color	Gray
-------	------

Case Lot Measurement

Case Lot	12
Case Width	16.125
Case Height	23.75
Case Length	21.5
Case Lot Cube (ft.)	4.77
Case Lot Weight (lbs.)	23.78

PRODUCT **ACCESSORIES**

Name	Item #
Dish Box Covers	1500-31
Dish Box Covers	1522-31



BOX BUS GRAY 5 DEEP 15X20

Bus Boxes

PRODUCT SPECIFICATIONS

Model Information

UPC

029419885893

Unit Dimensions

Overall Dimensions (IN)	21.75 x 15.625 x 5
(W) Width (IN)	21.75
(D) Depth (IN)	15.62
(H) Height (IN)	5
(W) Width (CM)	55.2
(D) Depth (CM)	39.5
(H) Height (CM)	12.7

Construction

Color	Gray
-------	------






Case Lot Measurement

Case Lot	12
Case Width	16.125
Case Height	23.75
Case Length	21.5
Case Lot Cube (ft.)	4.77
Case Lot Weight (lbs.)	23.78

PRODUCT **ACCESSORIES**

Name	Item #
Dish Box Covers	1500-31
Dish Box Covers	1522-31



	32-Beige (Standard)
	01-Chocolate
	05-White
	06-Black
	31-Gray

5-inch-deep Traex® bus box in brown

Durable and reliable, the Traex bus box by Vollrath is sure to impress. The high-density polyethylene material, strong handles and reinforced ribs resist wear and extend the life of the unit. Approved for high and low temperatures, this versatile bus box can be used in a variety of applications. Stacking lugs prevent this box from sticking with others and shorten drying times, ensuring that this sturdy bus box is always ready for hard work.

Approved for temperatures between
-30°F and 180°F

High-density polyethylene material
lasts for years

Reinforced handles and ribs on the top
and bottom improve durability

Stacking lugs prevent box from sticking
with others and shorten drying times

NSF-certified for food contact

Please note this is a bulk item, packed
at 150 per pallet

PRODUCT **SPECIFICATIONS**

Model Information

UPC	029419885930
-----	--------------

Unit Dimensions

Overall Dimensions (IN)	21.75 x 15.625 x 5
(W) Width (IN)	21.75
(D) Depth (IN)	15.62
(H) Height (IN)	5
(W) Width (CM)	55.2
(D) Depth (CM)	39.5
(H) Height (CM)	12.7

Construction

Color	Brown
-------	-------

Case Lot Measurement

Case Lot	150
Case Width	0
Case Height	1.8333
Case Length	0

PRODUCT **ACCESSORIES**

Name	Item #
Dish Box Covers	1522-01

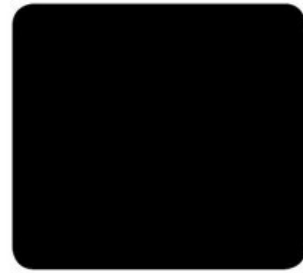
COLOR OPTIONS



Brown



White



Black



Gray



Natural

DISCONTINUED

Bus Boxes

Traex® boxes have reinforced ribs on top and bottom add strength for extended life

Signature boxes have smooth interior bottom and ribbed exterior bottom

Stacking lugs prevent sticking together and allow for quicker drying

Reinforced handles

Made of high-density polyethylene

Approved for temperatures up to 180°F (82°C) and as low as -30° F (-34°C)

Signature boxes have a hole in handle for easy drainage and a smooth interior bottom for easy clean up

Items 1527B-XX and 1521B-XX are bulk items and case lots will not be broken

Items 1527-XX and 1527B-XX are not available in beige (32)

Bus Boxes, except for 52629, are NSF Certified for food contact

Where applicable, add two digit suffix (XX) after dash (-) to indicate color. (01 - brown, 05 - white, 06 - black, 31 - gray)

Color shown in image may differ from options available for specific item

PRODUCT **SPECIFICATIONS**

Unit Dimensions

Overall Dimensions (IN)	21.75 x 15.625 x 5
(W) Width (IN)	21.75
(D) Depth (IN)	15.62
(H) Height (IN)	5
(W) Width (CM)	55.2
(D) Depth (CM)	39.5
(H) Height (CM)	12.7

Construction

Color	Red
-------	-----



Traex® High Density Polyethylene Bus Tub in White

Durable and reliable, the Vollrath® Traex deluxe bus box is sure to impress. The high-density polyethylene material, strong handles and reinforced ribs resist wear and extend the life of the unit. Approved for high and low temperatures, this versatile bus box can be used in a variety of applications. Stacking lugs prevent the boxes from sticking together and shorten drying times, ensuring that these sturdy bus boxes are always ready for hard work.

Approved for temperatures between
-30°F and 180°F

Reinforced handles and ribs on the top
and bottom improve durability

High-density polyethylene material
lasts for years

Stacking lugs prevent boxes from sticking together and shorten drying times

NSF-certified for food contact

Please note that this is a bulk item, packed at 150 per pallet

PRODUCT **SPECIFICATIONS**

Model Information

UPC	029419885954
-----	--------------

Unit Dimensions

Overall Dimensions (IN)	21.75 x 15.625 x 5
(W) Width (IN)	21.75
(D) Depth (IN)	15.62
(H) Height (IN)	5
(W) Width (CM)	55.2
(D) Depth (CM)	39.5
(H) Height (CM)	12.7

Construction

Color	White
-------	-------

Case Lot Measurement

Case Lot	150
Case Width	0
Case Height	1.8333
Case Length	0

PRODUCT **ACCESSORIES**

Name	Item #
Dish Box Covers	1522-05



5-inch-deep Traex® bus box in black

Durable and reliable, the Traex bus box by Vollrath is sure to impress. The high-density polyethylene material, strong handles and reinforced ribs resist wear and extend the life of the unit. Approved for high and low temperatures, this versatile bus box can be used in a variety of applications. Stacking lugs prevent this box from sticking with others and shorten drying times, ensuring that this sturdy bus box is always ready for hard work.

Approved for temperatures between
-30°F and 180°F

High-density polyethylene material
lasts for years

Reinforced handles and ribs on the top
and bottom improve durability

Stacking lugs prevent box from sticking
with others and shorten drying times

NSF-certified for food contact

Please note this is a bulk item, packed
at 150 per pallet

PRODUCT **SPECIFICATIONS**

Model Information

UPC	029419885961
-----	--------------

Unit Dimensions

Overall Dimensions (IN)	21.75 x 15.625 x 5
(W) Width (IN)	21.75
(D) Depth (IN)	15.62
(H) Height (IN)	5
(W) Width (CM)	55.2
(D) Depth (CM)	39.5
(H) Height (CM)	12.7

Construction

Color	Black
-------	-------

Case Lot Measurement

Case Lot	150
Case Width	0
Case Height	1.8333
Case Length	0

PRODUCT **ACCESSORIES**

Name	Item #
Traex® bus box cover in black	1522-06



Traex® High Density Polyethylene Bus Tub in Gray

Durable and reliable, the Vollrath® Traex deluxe bus box is sure to impress. The high-density polyethylene material, strong handles and reinforced ribs on the top and bottom resist wear and extend the life of the unit. Approved for high and low temperatures, this versatile bus box can be used in a variety of applications. Stacking lugs prevent the boxes from sticking together and shorten drying times, ensuring that these sturdy bus boxes are always ready for hard work.

Approved for temperatures between -30°F and 180°F	Stacking lugs prevent boxes from sticking together and shorten drying times
High-density polyethylene material lasts for years	NSF-certified
Reinforced handles and ribs on the top and bottom improve durability	Please note that this is a bulk item, packed at 150 per pallet

PRODUCT **SPECIFICATIONS**

Model Information	
UPC	029419885978

Unit Dimensions	
Overall Dimensions (IN)	21.75 x 15.625 x 5
(W) Width (IN)	21.75
(D) Depth (IN)	15.62
(H) Height (IN)	5
(W) Width (CM)	55.2
(D) Depth (CM)	39.5
(H) Height (CM)	12.7

Construction	
Color	Gray

Case Lot Measurement	
Case Lot	150
Case Width	0

Case Height	1.8333
Case Length	0

PRODUCT **ACCESSORIES**

Name	Item #
Dish Box Covers	1522-31



Traex® High Density Polyethylene Bus Box in Chocolate

Ensure that your dinnerware and flatware pieces are properly organized and stored with the help of this Vollrath 1527-01 Traex® 21 3/4" x 15 1/2" x 7" chocolate high density polyethylene bus tub. Featuring a dependable high density polyethylene construction, this bus tub is designed for everyday use in high-volume consumer traffic environments. It also boasts reinforced ribs on the top and bottom of the tub for extra strength and protection against chips or cracks. Plus, it offers a temperature range of -30 to 180 degrees Fahrenheit, making it a versatile addition to any back-of-house setting! Its convenient stacking lugs even promote quicker drying and eliminate the possibility of your bus tubs getting stuck together when stacked.

Made of high-density polyethylene

Traex® boxes have reinforced ribs on top and bottom add strength for extended life

Stacking lugs prevent sticking together and allow for quicker drying

Approved for temperatures up to 180°F (82°C) and as low as -30° F (-34°C)

Reinforced handles

PRODUCT SPECIFICATIONS

Model Information

Model	1527
UPC	029419886265

Unit Dimensions

Overall Dimensions (IN)	21.75 x 15.625 x 7
(W) Width (IN)	21.75
(D) Depth (IN)	15.62
(H) Height (IN)	7
(W) Width (CM)	55.2
(D) Depth (CM)	39.5
(H) Height (CM)	17.8

Construction

Color	Brown
-------	-------

Case Lot Measurement

Case Lot	12
Case Width	16

Case Height	25.5
Case Length	22
Case Lot Cube (ft.)	3.78
Case Lot Weight (lbs.)	24.3



7-inch-deep Traex® bus box in white

Incredibly sturdy, the Traex bus box by Vollrath is sure to meet your needs. The high-density polyethylene material, strong handles and reinforced ribs on the top and bottom resist wear and extend the life of the unit. Approved for high and low temperatures, this versatile bus box can be used in a variety of applications. Stacking lugs prevent this box from sticking with others and shorten drying times, ensuring that this sturdy bus box is always ready for hard work.

Approved for temperatures between
-30°F and 180°F

High-density polyethylene material
lasts for years

Reinforced handles and ribs on the top
and bottom improve durability

Stacking lugs prevent box from sticking
with others and shorten drying times

NSF-certified for food contact

PRODUCT **SPECIFICATIONS**

Model Information

Model	1527
UPC	029419886272

Unit Dimensions

Overall Dimensions (IN)	21.75 x 15.625 x 7
(W) Width (IN)	21.75
(D) Depth (IN)	15.62
(H) Height (IN)	7
(W) Width (CM)	55.2
(D) Depth (CM)	39.5
(H) Height (CM)	17.8

Construction

Color	White
-------	-------

Case Lot Measurement

Case Lot	12
Case Width	16
Case Height	25.5
Case Length	22
Case Lot Cube (ft.)	5.19
Case Lot Weight (lbs.)	24.15



7-inch-deep Traex® bus box in black

Incredibly sturdy, the Traex bus box by Vollrath is sure to meet your needs. The high-density polyethylene material, strong handles and reinforced ribs on the top and bottom resist wear and extend the life of the unit. Approved for high and low temperatures, this versatile bus box can be used in a variety of applications. Stacking lugs prevent this box from sticking with others and shorten drying times, ensuring that this sturdy bus box is always ready for hard work.

Approved for temperatures between
-30°F and 180°F

High-density polyethylene material
lasts for years

Reinforced handles and ribs on the top
and bottom improve durability

Stacking lugs prevent box from sticking
with others and shorten drying times

NSF-certified for food contact

PRODUCT **SPECIFICATIONS**

Model Information

Model	1527
UPC	029419886289

Unit Dimensions

Overall Dimensions (IN)	21.75 x 15.625 x 7
(W) Width (IN)	21.75
(D) Depth (IN)	15.62
(H) Height (IN)	7
(W) Width (CM)	55.2
(D) Depth (CM)	39.5
(H) Height (CM)	17.8

Construction

Color	Black
-------	-------

Case Lot Measurement

Case Lot	12
Case Width	16
Case Height	25.5
Case Length	22
Case Lot Cube (ft.)	5.19
Case Lot Weight (lbs.)	24.26

PRODUCT **ACCESSORIES**

Name	Item #
Dish Box Covers	1500-06
Traex® bus box cover in black	1522-06



7-inch-deep Traex[®] bus box in gray

Incredibly sturdy, the Traex bus box by Vollrath is sure to meet your needs. The high-density polyethylene material, strong handles and reinforced ribs on the top and bottom resist wear and extend the life of the unit. Approved for high and low temperatures, this versatile bus box can be used in a variety of applications. Stacking lugs prevent this box from sticking with others and shorten drying times, ensuring that this sturdy bus box is always ready for hard work.

Approved for temperatures between
-30°F and 180°F

High-density polyethylene material
lasts for years

Reinforced handles and ribs on the top and bottom improve durability

Stacking lugs prevent box from sticking with others and shorten drying times

NSF-certified for food contact

PRODUCT **SPECIFICATIONS**

Model Information

Model	1527
UPC	029419886296

Unit Dimensions

Overall Dimensions (IN)	21.75 x 15.625 x 7
(W) Width (IN)	21.75
(D) Depth (IN)	15.62
(H) Height (IN)	7
(W) Width (CM)	55.2
(D) Depth (CM)	39.5
(H) Height (CM)	17.8

Construction

Color	Gray
-------	------

Case Lot Measurement






Case Lot	12
Case Width	16
Case Height	25.5

Case Length	22
-------------	----

Case Lot Cube (ft.)	5.19
---------------------	------

Case Lot Weight (lbs.)	24.37
------------------------	-------



	32-Beige (Standard)
	01-Chocolate
	05-White
	06-Black
	31-Gray

7-inch-deep Traex® bus box in brown

Durable and reliable, the Traex bus box by Vollrath is sure to impress. The high-density polyethylene material, strong handles and reinforced ribs resist wear and extend the life of the unit. Approved for high and low temperatures, this versatile bus box can be used in a variety of applications. Stacking lugs prevent this box from sticking with others and shorten drying times, ensuring that this sturdy bus box is always ready for hard work.

Approved for temperatures between
-30°F and 180°F

High-density polyethylene material
lasts for years

Reinforced handles and ribs on the top
and bottom improve durability

Stacking lugs prevent box from sticking
with others and shorten drying times

NSF-certified for food contact

Please note this is a bulk item, packed
at 150 per pallet

PRODUCT **SPECIFICATIONS**

Model Information

UPC	029419886357
-----	--------------

Unit Dimensions

Overall Dimensions (IN)	21.75 x 15.625 x 7
(W) Width (IN)	21.75
(D) Depth (IN)	15.62
(H) Height (IN)	7
(W) Width (CM)	55.2
(D) Depth (CM)	39.5
(H) Height (CM)	17.8

Construction

Color	Brown
-------	-------

Case Lot Measurement

Case Lot	150
Case Width	0
Case Height	1.833333
Case Length	0



Bus Boxes

Bus Boxes

PRODUCT SPECIFICATIONS

Model Information

UPC

029419886371

Unit Dimensions

Overall Dimensions (IN)

21.75 x 15.625 x 7

(W) Width (IN)	21.75
(D) Depth (IN)	15.62
(H) Height (IN)	7
(W) Width (CM)	55.2
(D) Depth (CM)	39.5
(H) Height (CM)	17.8

Construction

Color	White
-------	-------

Case Lot Measurement

Case Lot	150
Case Width	0
Case Height	1.833333
Case Length	0



Bus Boxes

Incredibly sturdy, the Vollrath® Traex bus box is sure to meet your needs. The high-density polyethylene material, strong handles and reinforced ribs on the top and bottom resist wear and extend the life of the unit. Approved for high and low temperatures, this versatile bus box can be used in a variety of applications. Stacking lugs prevent the boxes from sticking together and shorten drying times, ensuring that these durable bus boxes are always ready for hard work.

Approved for temperatures between
-30°F and 180°F

High-density polyethylene material
lasts for years

Reinforced handles and ribs on the top
and bottom improve durability

Stacking lugs prevent boxes from
sticking together and shorten drying
times

NSF-certified for food contact

Please note that this is a bulk item,
packed at 150 per pallet

PRODUCT **SPECIFICATIONS**

Model Information

UPC	029419886395
-----	--------------

Unit Dimensions

Overall Dimensions (IN)	21.75 x 15.625 x 7
(W) Width (IN)	21.75
(D) Depth (IN)	15.62
(H) Height (IN)	7
(W) Width (CM)	55.2
(D) Depth (CM)	39.5
(H) Height (CM)	17.8

Construction

Color	Black
-------	-------

Case Lot Measurement

Case Lot	150
Case Width	0
Case Height	1.833333
Case Length	0



Bus Boxes

Incredibly sturdy, the Vollrath® Traex bus box is sure to meet your needs. The high-density polyethylene material, strong handles and reinforced ribs on the top and bottom resist wear and extend the life of the unit. Approved for high and low temperatures, this versatile bus box can be used in a variety of applications. Stacking lugs prevent the boxes from sticking together and shorten drying times, ensuring that these durable bus boxes are always ready for hard work.

Approved for temperatures between
-30°F and 180°F

High-density polyethylene material
lasts for years

Reinforced handles and ribs on the top
and bottom improve durability

Stacking lugs prevent boxes from
sticking together and shorten drying
times

NSF-certified

Please note that this is a bulk item,
packed at 150 per pallet

PRODUCT **SPECIFICATIONS**

Model Information

UPC	029419886425
-----	--------------

Unit Dimensions

Overall Dimensions (IN)	21.75 x 15.625 x 7
(W) Width (IN)	21.75
(D) Depth (IN)	15.62
(H) Height (IN)	7
(W) Width (CM)	55.2
(D) Depth (CM)	39.5
(H) Height (CM)	17.8

Construction

Color	Gray
-------	------

Case Lot Measurement

Case Lot	150
Case Width	0
Case Height	1.833333
Case Length	0



Bus Boxes

Bus Boxes

PRODUCT SPECIFICATIONS

Model Information

UPC

029419886548

Unit Dimensions

Overall Dimensions (IN)

23.5 x 12 x 5.25

(W) Width (IN)	23.5
(D) Depth (IN)	12
(H) Height (IN)	5.25
(W) Width (CM)	59.7
(D) Depth (CM)	30.5
(H) Height (CM)	13.7






Construction

Color	Gray
-------	------

Case Lot Measurement

Case Lot	6
Case Width	14
Case Height	14
Case Length	26
Case Lot Cube (ft.)	2.95
Case Lot Weight (lbs.)	13.0



	32-Beige (Standard)
	01-Chocolate
	05-White
	06-Black
	31-Gray

Bus Boxes

Bus Boxes

PRODUCT SPECIFICATIONS

Model Information

UPC	029419887026
-----	--------------

Unit Dimensions

Overall Dimensions (IN)	22.875 x 17.75 x 6.125
(W) Width (IN)	22.87
(D) Depth (IN)	17.75
(H) Height (IN)	6.12

(W) Width (CM)	58.1
(D) Depth (CM)	45.1
(H) Height (CM)	15.6

Construction

Color	Brown
-------	-------

Case Lot Measurement

Case Lot	12
Case Width	17.3
Case Height	14
Case Length	22.5
Case Lot Cube (ft.)	3.13
Case Lot Weight (lbs.)	31.99



Bus Boxes

Bus Boxes

PRODUCT SPECIFICATIONS

Model Information

UPC

029419887033

Unit Dimensions

Overall Dimensions (IN)

22.875 x 17.75 x 6.125

(W) Width (IN)	22.87
(D) Depth (IN)	17.75
(H) Height (IN)	6.12
(W) Width (CM)	58.1
(D) Depth (CM)	45.1
(H) Height (CM)	15.6

Construction

Color	Gray
-------	------

Case Lot Measurement

Case Lot	12
Case Width	17.3
Case Height	14
Case Length	22.5
Case Lot Cube (ft.)	3.13
Case Lot Weight (lbs.)	31.99



20" x 15" Signature bus box in black

Designed with strength, convenience and versatility in mind, the Signature bus box by Vollrath is perfect for any kitchen. The high-density polyethylene material and reinforced handles resist wear and promise years of use, and the handle features a hole for quick draining. This bus box features a smooth interior bottom and ribbed exterior bottom and is approved for temperatures between -30°F and 180°F. Stacking lugs prevent boxes from sticking together and shorten drying times for ease of use and superior performance.

Approved for temperatures between
-30°F and 180°F

High-density polyethylene and
reinforced handles resist wear and
promise years of use

Hole in handle for easy draining

Smooth interior bottom, ribbed exterior
bottom

Stacking lugs prevent box from sticking with others and shorten drying times

Made in the USA
NSF-certified

PRODUCT SPECIFICATIONS

Model Information

UPC	029419092178
-----	--------------

Unit Dimensions

Overall Dimensions (IN)	20 x 15 x 5
(W) Width (IN)	20
(D) Depth (IN)	15
(H) Height (IN)	5
(W) Width (CM)	50.8
(D) Depth (CM)	38.1
(H) Height (CM)	12.7

Construction

Color	Black
-------	-------

Case Lot Measurement

Case Lot	12
Case Width	16
Case Height	17
Case Length	21.5
Case Lot Cube (ft.)	4.45

Case Lot Weight (lbs.)

24.7

PRODUCT **ACCESSORIES**

Name

Item #

Signature universal bus box cover in black

52420



20" x 15" Signature bus box in gray

Designed with strength, convenience and versatility in mind, the Signature bus box by Vollrath is perfect for any kitchen. The high-density polyethylene material and reinforced handles resist wear and promise years of use, and the handle features a hole for quick draining. This bus box features a smooth interior bottom and ribbed exterior bottom and is approved for temperatures between -30°F and 180°F. Stacking lugs prevent boxes from sticking together and shorten drying times for ease of use and superior performance.

Approved for temperatures between
-30°F and 180°F

High-density polyethylene and
reinforced handles resist wear and
promise years of use

Hole in handle for easy draining

Smooth interior bottom, ribbed exterior
bottom

Stacking lugs prevent box from sticking with others and shorten drying times

Made in the USA
NSF-certified

PRODUCT SPECIFICATIONS

Model Information

UPC	029419092185
-----	--------------

Unit Dimensions

Overall Dimensions (IN)	20 x 15 x 5
(W) Width (IN)	20
(D) Depth (IN)	15
(H) Height (IN)	5
(W) Width (CM)	50.8
(D) Depth (CM)	38.1
(H) Height (CM)	12.7

Construction

Color	Gray
-------	------

Case Lot Measurement

Case Lot	12
Case Width	16.5
Case Height	20.5
Case Length	22.75
Case Lot Cube (ft.)	4.45



Bus Boxes

Bus Boxes

PRODUCT SPECIFICATIONS

Model Information

UPC

029419092208

Unit Dimensions

Overall Dimensions (IN)	20 x 15 x 5
(W) Width (IN)	20
(D) Depth (IN)	15
(H) Height (IN)	5
(W) Width (CM)	50.8
(D) Depth (CM)	38.1
(H) Height (CM)	12.7

Construction

Color	Brown
-------	-------

Case Lot Measurement

Case Lot	12
Case Width	20.5
Case Height	16.5
Case Length	23
Case Lot Cube (ft.)	4.45
Case Lot Weight (lbs.)	24.7



20" x 15" Signature bus box in natural

Designed with strength, convenience and versatility in mind, the Signature bus box by Vollrath is perfect for any kitchen. The high-density polyethylene material and reinforced handles resist wear and promise years of use, and the handle features a hole for quick draining. This bus box features a smooth interior bottom and ribbed exterior bottom and is approved for temperatures between -30°F and 180°F. Stacking lugs prevent boxes from sticking together and shorten drying times for ease of use and superior performance.

Approved for temperatures between
-30°F and 180°F

High-density polyethylene and
reinforced handles resist wear and
promise years of use

Hole in handle for easy draining

Smooth interior bottom, ribbed exterior bottom

Stacking lugs prevent box from sticking with others and shorten drying times

Made in the USA

NSF-certified

PRODUCT **SPECIFICATIONS**

Model Information

UPC	029419092215
-----	--------------

Unit Dimensions

Overall Dimensions (IN)	20 x 15 x 5
(W) Width (IN)	20
(D) Depth (IN)	15
(H) Height (IN)	5
(W) Width (CM)	50.8
(D) Depth (CM)	38.1
(H) Height (CM)	12.7

Construction

Color	Natural
-------	---------

Case Lot Measurement

Case Lot	12
Case Width	16.5
Case Height	20.5

Case Length	22.75
-------------	-------

Case Lot Cube (ft.)	4.45
---------------------	------

Case Lot Weight (lbs.)	24.7
------------------------	------



20" x 17" Signature bus box in gray

Designed with strength, convenience and versatility in mind, the Signature bus box by Vollrath is perfect for any kitchen. The high-density polyethylene material and reinforced handles resist wear and promise years of use, and the handle features a hole for quick draining. This bus box features a smooth interior bottom and ribbed exterior bottom and is approved for temperatures between -30°F and 180°F. Stacking lugs prevent boxes from sticking together and shorten drying times for ease of use and superior performance.

Approved for temperatures between
-30°F and 180°F

High-density polyethylene and
reinforced handles resist wear and
promise years of use

Hole in handle for easy draining

Smooth interior bottom, ribbed exterior bottom

Stacking lugs prevent box from sticking with others and shorten drying times

Made in the USA

NSF-certified

PRODUCT **SPECIFICATIONS**

Model Information

UPC	029419092246
-----	--------------

Unit Dimensions

Overall Dimensions (IN)	20 x 17 x 5
(W) Width (IN)	20
(D) Depth (IN)	17
(H) Height (IN)	5
(W) Width (CM)	50.8
(D) Depth (CM)	43.2
(H) Height (CM)	12.7

Construction

Color	Gray
-------	------

Case Lot Measurement

Case Lot	12
Case Width	17.25
Case Height	16.25

Case Length	22
-------------	----

Case Lot Cube (ft.)	3.57
---------------------	------

Case Lot Weight (lbs.)	26.14
------------------------	-------



20" x 17" Signature bus box in black

Designed with strength, convenience and versatility in mind, the Signature bus box by Vollrath is perfect for any kitchen. The high-density polyethylene material and reinforced handles resist wear and promise years of use, and the handle features a hole for quick draining. This bus box features a smooth interior bottom and ribbed exterior bottom and is approved for temperatures between -30°F and 180°F. Stacking lugs prevent boxes from sticking together and shorten drying times for ease of use and superior performance.

Approved for temperatures between
-30°F and 180°F

High-density polyethylene and
reinforced handles resist wear and
promise years of use

Hole in handle for easy draining

Smooth interior bottom, ribbed exterior
bottom

Stacking lugs prevent box from sticking with others and shorten drying times

Made in the USA
NSF-certified

PRODUCT SPECIFICATIONS

Model Information

UPC	029419092253
-----	--------------

Unit Dimensions

Overall Dimensions (IN)	20 x 17 x 5
(W) Width (IN)	20
(D) Depth (IN)	17
(H) Height (IN)	5
(W) Width (CM)	50.8
(D) Depth (CM)	43.2
(H) Height (CM)	12.7

Construction

Color	Black
-------	-------

Case Lot Measurement

Case Lot	12
Case Width	17.25
Case Height	16.25
Case Length	22.75
Case Lot Cube (ft.)	3.57



Traex® Signature undercounter bus box in gray

The Traex Signature bus box by Vollrath is designed to get the job done. The high-density polyethylene material lasts for years and is approved for temperatures between -30°F and 180°F, so you can clean any mess without worrying about whether your bus box can handle it. Thanks to the reliable built-in handles, it's easy to transport dirty dishes to the kitchen. Or this box can simply hold dirty items until they can be washed. The stacking lugs shorten drying times and prevent this box from sticking to others when stacked, making cleaning and storing a breeze.

High-density polyethylene material lasts for years

Approved for temperatures between -30°F and 180°F

Built-in handles ensure easy transportation

Stacking lugs prevent boxes from sticking together and shorten drying times

Designed to help transport and hold dirty dishes

PRODUCT **SPECIFICATIONS**

Model Information

UPC	029419092321
-----	--------------

Unit Dimensions

Overall Dimensions (IN)	20 x 12 x 6
(W) Width (IN)	20
(D) Depth (IN)	12
(H) Height (IN)	6
(W) Width (CM)	50.8
(D) Depth (CM)	30.5
(H) Height (CM)	15.2

Construction

Color	Gray
-------	------

Case Lot Measurement

Case Lot	12
Case Width	12.5
Case Height	22.5

Case Length	21.5
-------------	------

Case Lot Cube (ft.)	3.5
---------------------	-----

Case Lot Weight (lbs.)	26.16
------------------------	-------



Bus Boxes

Bus Boxes

PRODUCT SPECIFICATIONS

Model Information

UPC

029419092352

Unit Dimensions

Overall Dimensions (IN)	23 x 17.5 x 6
(W) Width (IN)	23
(D) Depth (IN)	17.5
(H) Height (IN)	6
(W) Width (CM)	58.4
(D) Depth (CM)	44.5
(H) Height (CM)	15.2

Construction

Color	Gray
Number of Compartments	2

Case Lot Measurement

Case Lot	6
Case Width	18
Case Height	26.5
Case Length	11.5
Case Lot Cube (ft.)	3.17
Case Lot Weight (lbs.)	18.48



Bus Boxes

The Vollrath® Signature heavy-duty two-compartment bus box will easily meet the demands of your kitchen. The high-density polyethylene material, strong handles and ribbed exterior bottom resist wear and extend the life of the unit. Approved for high and low temperatures, this versatile bus box can be used in a variety of applications, and the two compartments allow easy separation between flatware and other items. Stacking lugs prevent the boxes from sticking together and shorten drying times, ensuring that these sturdy bus boxes are always ready for hard work.

Approved for temperatures between
-30°F and 180°F

High-density polyethylene material
lasts for years

Reinforced handles and ribs on the exterior bottom improve durability

Smooth interior bottom speeds cleaning times

Holes in handles allow for drainage

Stacking lugs prevent boxes from sticking together and shorten drying times

NSF-certified for food contact

PRODUCT **SPECIFICATIONS**

Model Information

UPC	029419092369
-----	--------------

Unit Dimensions

Overall Dimensions (IN)	23 x 17.5 x 6
(W) Width (IN)	23
(D) Depth (IN)	17.5
(H) Height (IN)	6
(W) Width (CM)	58.4
(D) Depth (CM)	44.5
(H) Height (CM)	15.2

Construction

Color	Black
Number of Compartments	2

Case Lot Measurement

Case Lot	6
Case Width	18

Case Height	11.25
Case Length	26.75
Case Lot Cube (ft.)	3.17
Case Lot Weight (lbs.)	18.6



Bus Boxes

The Vollrath® Signature heavy-duty bus box will easily meet the demands of your kitchen. The high-density polyethylene material, strong handles and ribbed exterior bottom resist wear and extend the life of the unit. Approved for high and low temperatures, this versatile bus box can be used in a variety of applications, and the two compartments allow easy separation between flatware and other items. Stacking lugs prevent the boxes from sticking together and shorten drying times, ensuring that these sturdy bus boxes are always ready for hard work.

Approved for temperatures between
-30°F and 180°F

High-density polyethylene material
lasts for years

Reinforced handles and ribs on the
exterior bottom improve durability

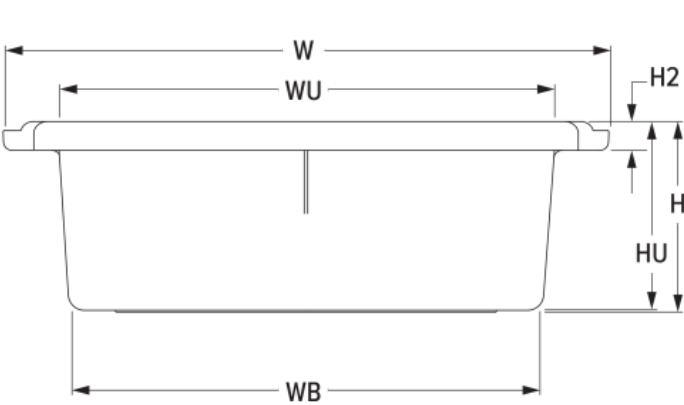
Smooth interior bottom speeds
cleaning times

Holes in handles allow for drainage

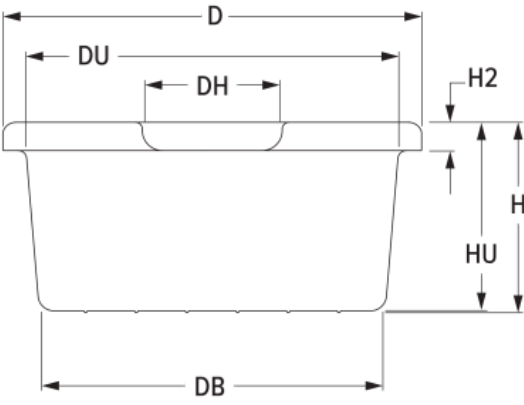
Stacking lugs prevent boxes from sticking together and shorten drying times

NSF-certified for food contact

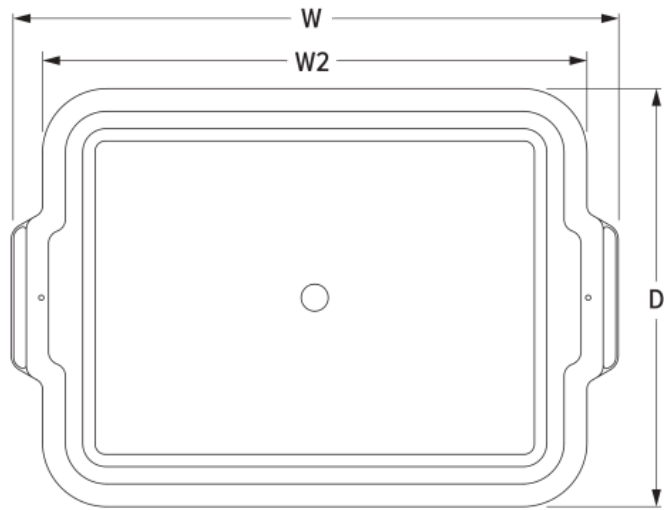
PRODUCT SPECIFICATIONS



FRONT VIEW



SIDE VIEW



TOP VIEW

Model Information

UPC	029419092550
-----	--------------

Unit Dimensions

Overall Dimensions (IN)	22.36 x 15.5 x 7.04
-------------------------	---------------------

(W) Width (IN)	22.36
----------------	-------

(WU) Usable Width (IN)	18.285
------------------------	--------

(WB) Width Base (IN)	17.281
----------------------	--------

(W2) Secondary Width (IN)	20.01
---------------------------	-------

(D) Depth (IN)	15.5
----------------	------

(DU) Usable Depth (IN)	13.812
------------------------	--------

(DB) Depth Base (IN)	12.635
----------------------	--------

(H) Height (IN)	7.04
-----------------	------

Usable Height (IN)	6.887
--------------------	-------

(H2) Secondary Height (IN)	1.063
----------------------------	-------

(DH) Handle Depth (IN)	5
------------------------	---

(W) Width (CM)	56.8
----------------	------

(WU) Usable Width (CM)	46.4
------------------------	------

(WB) Width Base (CM)	43.9
----------------------	------

(W2) Secondary Width (CM)	50.8
---------------------------	------

(D) Depth (CM)	39.4
----------------	------

(DU) Usable Depth (CM)	35.1
------------------------	------

(DB) Depth Base (CM)	32.1
----------------------	------

(H) Height (CM)	17.9
-----------------	------

Usable Height (CM)	17.5
--------------------	------

(H2) Secondary Height (CM)	2.7
----------------------------	-----

(DH) Handle Depth (CM)

12.7

Construction

Color

Natural

Case Lot Measurement

Case Lot

12

Case Width

16.5

Case Height

20.5

Case Length

22.75

Case Lot Cube (ft.)

4.45

Case Lot Weight (lbs.)

29.44

PRODUCT ACCESSORIES

Name

Item #

Signature universal bus box cover in natural

52422



Bus Boxes

The Vollrath® Signature heavy-duty bus box will easily meet the demands of your kitchen. The high-density polyethylene material, strong handles and ribbed exterior bottom resist wear and extend the life of the unit. Approved for high and low temperatures, this versatile bus box can be used in a variety of applications, and the two compartments allow easy separation between flatware and other items. Stacking lugs prevent the boxes from sticking together and shorten drying times, ensuring that these sturdy bus boxes are always ready for hard work.

Approved for temperatures between
-30°F and 180°F

High-density polyethylene material
lasts for years

Reinforced handles and ribs on the
exterior bottom improve durability

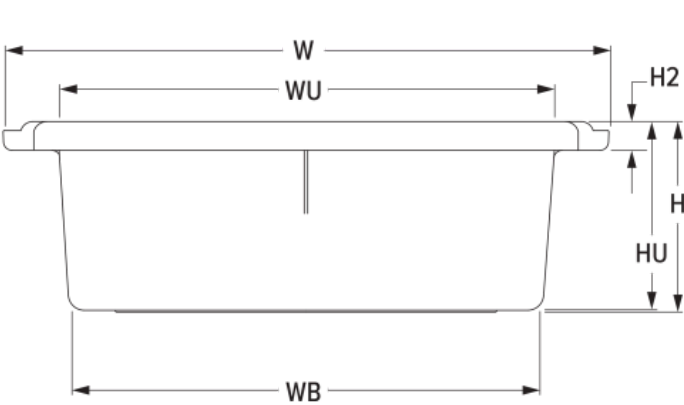
Smooth interior bottom speeds
cleaning times

Holes in handles allow for drainage

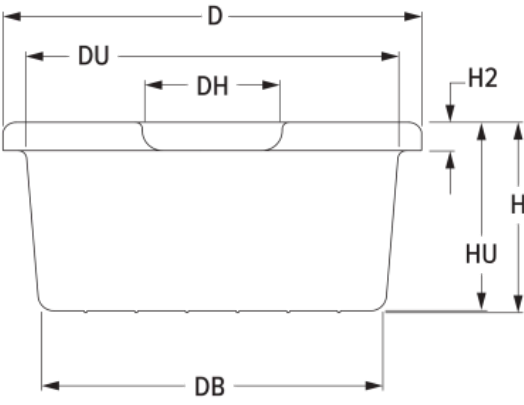
Stacking lugs prevent boxes from sticking together and shorten drying times

NSF-certified for food contact

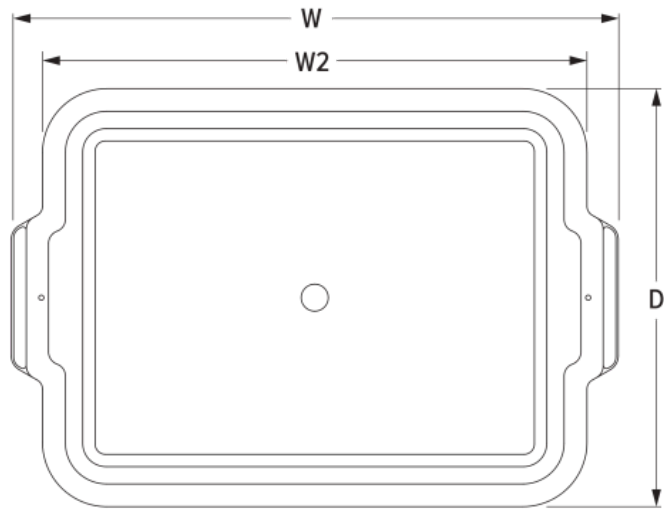
PRODUCT SPECIFICATIONS



FRONT VIEW



SIDE VIEW



TOP VIEW

Model Information

UPC	029419092567
-----	--------------

Unit Dimensions

Overall Dimensions (IN)	22.36 x 15.5 x 7.04
-------------------------	---------------------

(W) Width (IN)	22.36
----------------	-------

(WU) Usable Width (IN)	18.285
------------------------	--------

(WB) Width Base (IN)	17.281
----------------------	--------

(W2) Secondary Width (IN)	20.01
---------------------------	-------

(D) Depth (IN)	15.5
----------------	------

(DU) Usable Depth (IN)	13.812
------------------------	--------

(DB) Depth Base (IN)	12.635
----------------------	--------

(H) Height (IN)	7.04
-----------------	------

Usable Height (IN)	6.887
--------------------	-------

(H2) Secondary Height (IN)	1.063
----------------------------	-------

(DH) Handle Depth (IN)	5
------------------------	---

(W) Width (CM)	56.8
----------------	------

(WU) Usable Width (CM)	46.4
------------------------	------

(WB) Width Base (CM)	43.9
----------------------	------

(W2) Secondary Width (CM)	50.8
---------------------------	------

(D) Depth (CM)	39.4
----------------	------

(DU) Usable Depth (CM)	35.1
------------------------	------

(DB) Depth Base (CM)	32.1
----------------------	------

(H) Height (CM)	17.9
-----------------	------

Usable Height (CM)	17.5
--------------------	------

(H2) Secondary Height (CM)	2.7
----------------------------	-----

(DH) Handle Depth (CM)

12.7

Construction

Color

Black

Case Lot Measurement

Case Lot

12

Case Width

16.5

Case Height

20.5

Case Length

22.75

Case Lot Cube (ft.)

4.45

Case Lot Weight (lbs.)

29.44



Bus Boxes

The Vollrath® Signature heavy-duty bus box will easily meet the demands of your kitchen. The high-density polyethylene material, strong handles and ribbed exterior bottom resist wear and extend the life of the unit. Approved for high and low temperatures, this versatile bus box can be used in a variety of applications, and the two compartments allow easy separation between flatware and other items. Stacking lugs prevent the boxes from sticking together and shorten drying times, ensuring that these sturdy bus boxes are always ready for hard work.

Approved for temperatures between
-30°F and 180°F

High-density polyethylene material
lasts for years

Reinforced handles and ribs on the
exterior bottom improve durability

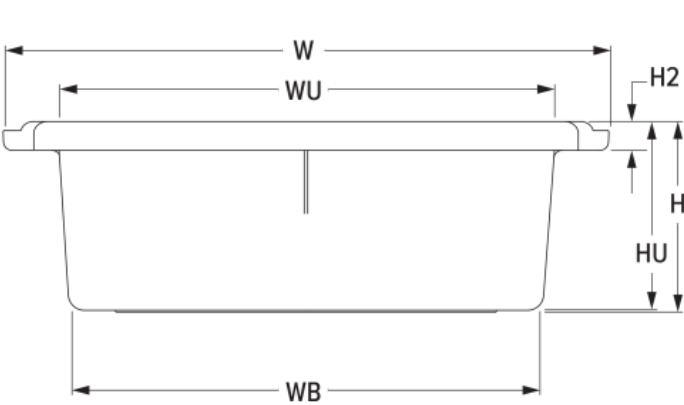
Smooth interior bottom speeds
cleaning times

Holes in handles allow for drainage

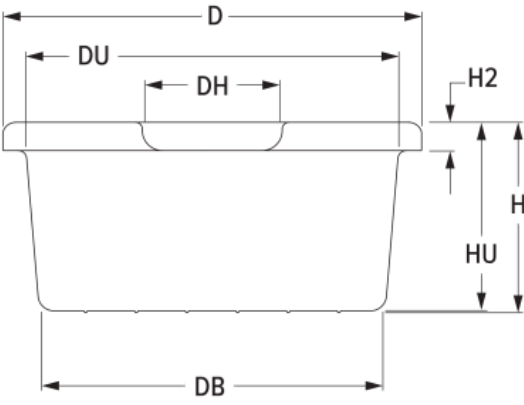
Stacking lugs prevent boxes from sticking together and shorten drying times

NSF-certified for food contact

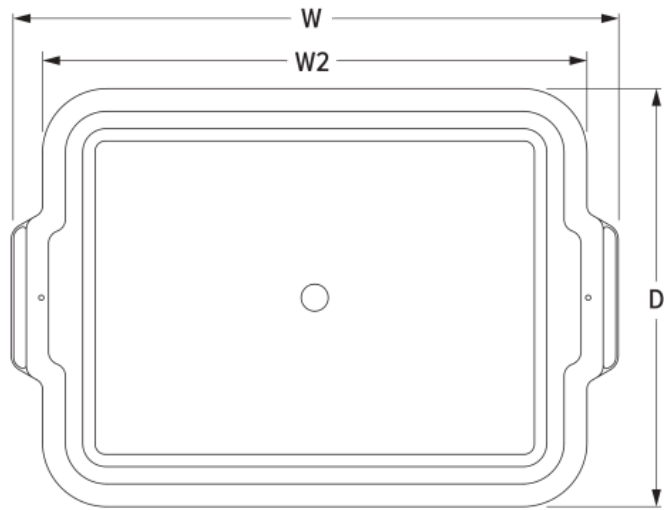
PRODUCT SPECIFICATIONS



FRONT VIEW



SIDE VIEW



TOP VIEW

Model Information

UPC	029419092574
-----	--------------

Unit Dimensions

Overall Dimensions (IN)	22.36 x 15.5 x 7.04
-------------------------	---------------------

(W) Width (IN)	22.36
----------------	-------

(WU) Usable Width (IN)	18.285
------------------------	--------

(WB) Width Base (IN)	17.281
----------------------	--------

(W2) Secondary Width (IN)	20.01
---------------------------	-------

(D) Depth (IN)	15.5
----------------	------

(DU) Usable Depth (IN)	13.812
------------------------	--------

(DB) Depth Base (IN)	12.635
----------------------	--------

(H) Height (IN)	7.04
-----------------	------

Usable Height (IN)	6.887
--------------------	-------

(H2) Secondary Height (IN)	1.063
----------------------------	-------

(DH) Handle Depth (IN)	5
------------------------	---

(W) Width (CM)	56.8
----------------	------

(WU) Usable Width (CM)	46.4
------------------------	------

(WB) Width Base (CM)	43.9
----------------------	------

(W2) Secondary Width (CM)	50.8
---------------------------	------

(D) Depth (CM)	39.4
----------------	------

(DU) Usable Depth (CM)	35.1
------------------------	------

(DB) Depth Base (CM)	32.1
----------------------	------

(H) Height (CM)	17.9
-----------------	------

Usable Height (CM)	17.5
--------------------	------

(H2) Secondary Height (CM)	2.7
----------------------------	-----

(DH) Handle Depth (CM)

12.7

Construction

Color

Gray

Case Lot Measurement

Case Lot

12

Case Width

16.5

Case Height

20.5

Case Length

22.75

Case Lot Cube (ft.)

4.45

Case Lot Weight (lbs.)

29.44



20" x 15" heavy-duty Signature bus box in brown

Designed with strength, convenience and versatility in mind, the Signature bus box by Vollrath is perfect for any kitchen. The heavy-duty, high-density polyethylene material and reinforced handles resist wear and promise years of use, and the handle features a hole for quick draining. This bus box features a smooth interior bottom and ribbed exterior bottom and is approved for temperatures between -30°F and 180°F. Stacking lugs prevent boxes from sticking together and shorten drying times for ease of use and superior performance.

Approved for temperatures between
-30°F and 180°F

High-density polyethylene and
reinforced handles resist wear and
promise years of use

Hole in handle for easy draining

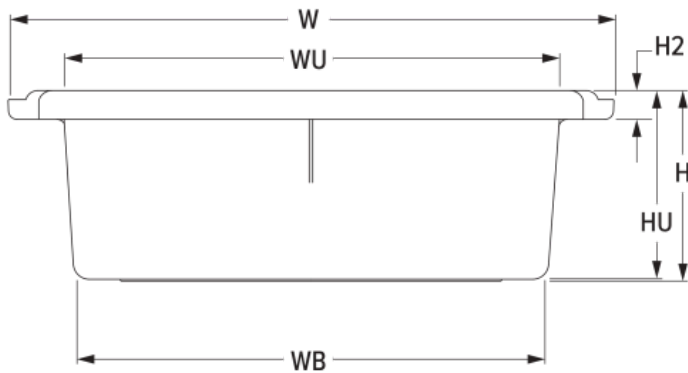
Smooth interior bottom, ribbed exterior bottom

Stacking lugs prevent box from sticking with others and shorten drying times

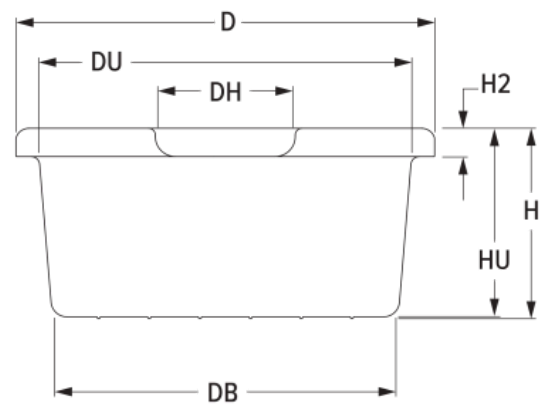
Made in the USA

NSF-certified

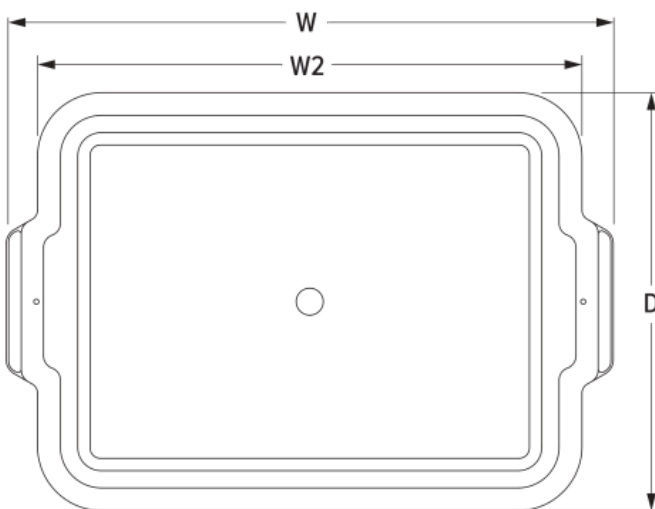
PRODUCT SPECIFICATIONS



FRONT VIEW



SIDE VIEW



TOP VIEW

Model Information

UPC	029419092581
-----	--------------

Unit Dimensions

Overall Dimensions (IN)	22.36 x 15.5 x 7.04
-------------------------	---------------------

(W) Width (IN)	22.36
----------------	-------

(WU) Usable Width (IN)	18.285
------------------------	--------

(WB) Width Base (IN)	17.281
----------------------	--------

(W2) Secondary Width (IN)	20.01
---------------------------	-------

(D) Depth (IN)	15.5
----------------	------

(DU) Usable Depth (IN)	13.812
------------------------	--------

(DB) Depth Base (IN)	12.635
----------------------	--------

(H) Height (IN)	7.04
-----------------	------

Usable Height (IN)	6.887
--------------------	-------

(H2) Secondary Height (IN)	1.063
----------------------------	-------

(DH) Handle Depth (IN)	5
------------------------	---

(W) Width (CM)	56.8
----------------	------

(WU) Usable Width (CM)	46.4
------------------------	------

(WB) Width Base (CM)	43.9
----------------------	------

(W2) Secondary Width (CM)	50.8
---------------------------	------

(D) Depth (CM)	39.4
----------------	------

(DU) Usable Depth (CM)	35.1
------------------------	------

(DB) Depth Base (CM)	32.1
----------------------	------

(H) Height (CM)	17.9
-----------------	------

Usable Height (CM)	17.5
--------------------	------

(H2) Secondary Height (CM)	2.7
----------------------------	-----

(DH) Handle Depth (CM)	12.7
------------------------	------

Construction

Color	Brown
-------	-------

Case Lot Measurement

Case Lot	12
----------	----

Case Width	20.5
------------	------

Case Height	16.5
-------------	------

Case Length	23
-------------	----

Case Lot Cube (ft.)	4.45
---------------------	------

Case Lot Weight (lbs.)	29.44
------------------------	-------

PRODUCT ACCESSORIES

Name	Item #
------	--------

Signature universal bus box cover in natural	52422
--	-------



Complete Bussing System Kits

Made in U.S.A.

PRODUCT SPECIFICATIONS

Model Information

UPC

029419087877

Unit Dimensions

(W) Width (IN)	17.000009
(H) Height (IN)	16.750009

Weight

Weight (LB)	11.76
-------------	-------

Case Lot Measurement

Case Lot	1
Case Width	17
Case Height	16.75
Case Length	22.5
Case Lot Cube (ft.)	3.71
Case Lot Weight (lbs.)	11.76

PRODUCT PARTS

Name	Part #
RIVET OVAL HEAD SEMI-TUBULAR	21807-3
SILVER BIN - GREY	21757-1



По вопросам продаж и поддержки обращайтесь:				
Алматы (727)345-47-04 Ангарск (3955)60-70-56 Архангельск (8182)63-90-72 Астрахань (8512)99-46-04 Барнаул (3852)73-04-60 Белгород (4722)40-23-64 Благовещенск (4162)22-76-07 Брянск (4832)59-03-52 Владивосток (423)249-28-31 Владикавказ (8672)28-90-48 Владимир (4922)49-43-18 Волгоград (844)278-03-48 Вологда (8172)26-41-59 Воронеж (473)204-51-73 Екатеринбург (343)384-55-89	Иваново (4932)77-34-06 Ижевск (3412)26-03-58 Иркутск (395)279-98-46 Казань (843)206-01-48 Калининград (4012)72-03-81 Калуга (4842)92-23-67 Кемерово (3842)65-04-62 Киров (8332)68-02-04 Коломна (4966)23-41-49 Кострома (4942)77-07-48 Краснодар (861)203-40-90 Красноярск (391)204-63-61 Курск (4712)77-13-04 Курган (3522)50-90-47 Липецк (4742)52-20-81	Магнитогорск (3519)55-03-13 Москва (495)268-04-70 Мурманск (8152)59-64-93 Набережные Челны (8552)20-53-41 Нижний Новгород (831)429-08-12 Новокузнецк (3843)20-46-81 Ноябрьск (3496)41-32-12 Новосибирск (383)227-86-73 Омск (3812)21-46-40 Орел (4862)44-53-42 Оренбург (3532)37-68-04 Пенза (8412)22-31-16 Петрозаводск (8142)55-98-37 Псков (8112)59-10-37 Пермь (342)205-81-47	Ростов-на-Дону (863)308-18-15 Рязань (4912)46-61-64 Самара (846)206-03-16 Санкт-Петербург (812)309-46-40 Саратов (845)249-38-78 Севастополь (8692)22-31-93 Саранск (8342)22-96-24 Симферополь (3652)67-13-56 Смоленск (4812)29-41-54 Сочи (862)225-72-31 Ставрополь (8652)20-65-13 Сургут (3462)77-98-35 Сыктывкар (8212)25-95-17 Тамбов (4752)50-40-97 Тверь (4822)63-31-35	Тольятти (8482)63-91-07 Томск (3822)98-41-53 Тула (4872)33-79-87 Тюмень (3452)66-21-18 Ульяновск (8422)24-23-59 Улан-Удэ (3012)59-97-51 Уфа (347)229-48-12 Хабаровск (4212)92-98-04 Чебоксары (8352)28-53-07 Челябинск (351)202-03-61 Череповец (8202)49-02-64 Чита (3022)38-34-83 Якутск (4112)23-90-97 Ярославль (4852)69-52-93
Россия +7(495)268-04-70	Казахстан +7(727)345-47-04	Беларусь +(375)257-127-884	Узбекистан +998(71)205-18-59	Киргизия +996(312)96-26-47

эл.почта: vha@nt-rt.ru || сайт: <https://vollrath.nt-rt.ru/>