

Системы для мытья плоской посуды

Технические характеристики

По вопросам продаж и поддержки обращайтесь:

Алматы (727)345-47-04
Ангарск (3955)60-70-56
Архангельск (8182)63-90-72
Астрахань (8512)99-46-04
Барнаул (3852)73-04-60
Белгород (4722)40-23-64
Благовещенск (4162)22-76-07
Брянск (4832)59-03-52
Владивосток (423)249-28-31
Владикавказ (8672)28-90-48
Владимир (4922)49-43-18
Волгоград (844)278-03-48
Вологда (8172)26-41-59
Воронеж (473)204-51-73
Екатеринбург (343)384-55-89

Иваново (4932)77-34-06
Ижевск (3412)26-03-58
Иркутск (395)279-98-46
Казань (843)206-01-48
Калининград (4012)72-03-81
Калуга (4842)92-23-67
Кемерово (3842)65-04-62
Киров (8332)68-02-04
Коломна (4966)23-41-49
Кострома (4942)77-07-48
Краснодар (861)203-40-90
Красноярск (391)204-63-61
Курск (4712)77-13-04
Курган (3522)50-90-47
Липецк (4742)52-20-81

Магнитогорск (3519)55-03-13
Москва (495)268-04-70
Мурманск (8152)59-64-93
Набережные Челны (8552)20-53-41
Нижний Новгород (831)429-08-12
Новокузнецк (3843)20-46-81
Ноябрьск (3496)41-32-12
Новосибирск (383)227-86-73
Омск (3812)21-46-40
Орел (4862)44-53-42
Оренбург (3532)37-68-04
Пенза (8412)22-31-16
Петрозаводск (8142)55-98-37
Псков (8112)59-10-37
Пермь (342)205-81-47

Ростов-на-Дону (863)308-18-15
Рязань (4912)46-61-64
Самара (846)206-03-16
Санкт-Петербург (812)309-46-40
Саратов (845)249-38-78
Севастополь (8692)22-31-93
Саранск (8342)22-96-24
Симферополь (3652)67-13-56
Смоленск (4812)29-41-54
Сочи (862)225-72-31
Ставрополь (8652)20-65-13
Сургут (3462)77-98-35
Сыктывкар (8212)25-95-17
Тамбов (4752)50-40-97
Тверь (4822)63-31-35

Тольятти (8482)63-91-07
Томск (3822)98-41-53
Тула (4872)33-79-87
Тюмень (3452)66-21-18
Ульяновск (8422)24-23-59
Улан-Удэ (3012)59-97-51
Уфа (347)229-48-12
Хабаровск (4212)92-98-04
Чебоксары (8352)28-53-07
Челябинск (351)202-03-61
Череповец (8202)49-02-64
Чита (3022)38-34-83
Якутск (4112)23-90-97
Ярославль (4852)69-52-93

Россия +7(495)268-04-70

Казахстан +7(727)345-47-04

Беларусь +(375)257-127-884

Узбекистан +998(71)205-18-59

Киргизия +996(312)96-26-47

эл.почта: vha@nt-rt.ru || сайт: <https://vollrath.nt-rt.ru/>



Cutlery Bins

The Vollrath® cutlery bin features four rounded compartments for organizing and storing your cutlery or flatware. The durable stainless steel construction provides years of reliable service making this an excellent, reliable solution for your cutlery storage.

Four compartments keep cutlery organized

Stainless steel construction is durable and long lasting

Made in the USA

PRODUCT SPECIFICATIONS

Model Information

UPC

029419040483

Unit Dimensions

Overall Dimensions (IN) 17 x 10.25 x 3.75

(W) Width (IN) 17

(D) Depth (IN) 10.25

(H) Height (IN) 3.75

(W) Width (CM) 43.2

(D) Depth (CM) 26

(H) Height (CM) 9.5

Case Lot Measurement

Case Lot 6

Case Width 11.25

Case Height 17.5

Case Length 24.25

Case Lot Cube (ft.) 2.77

Case Lot Weight (lbs.) 28.44



Flatware Soak & Washing Systems

Mesh surface on rack bottom keeps flatware and smaller items in the rack

PRODUCT SPECIFICATIONS

Model Information

UPC

029419884520

Unit Dimensions

Overall Dimensions (IN)	19.75 x 10 x 3.812
(W) Width (IN)	19.75
(D) Depth (IN)	10
(H) Height (IN)	3.81
(W) Width (CM)	50
(D) Depth (CM)	25.4
(H) Height (CM)	9.7

Construction

Color	Cocoa
-------	-------

Case Lot Measurement

Case Lot	1
Case Width	19.88
Case Height	5.94
Case Length	11.44
Case Lot Cube (ft.)	0.78
Case Lot Weight (lbs.)	3.4



Flatware Soak & Washing Systems

Mesh surface on rack bottom keeps flatware and smaller items in the rack

PRODUCT SPECIFICATIONS

Model Information

UPC

029419884537

Unit Dimensions

Overall Dimensions (IN)	24.5 x 13.375 x 5.25
(W) Width (IN)	24.5
(D) Depth (IN)	13.37
(H) Height (IN)	5.25
(W) Width (CM)	62.2
(D) Depth (CM)	34
(H) Height (CM)	13.3

Construction

Color	Cocoa
-------	-------

Case Lot Measurement

Case Lot	1
Case Width	13.94
Case Height	5.88
Case Length	25.44
Case Lot Cube (ft.)	1.21
Case Lot Weight (lbs.)	5.5



Traex® plastic vertical flatware cylinder in beige

The Traex plastic flatware cylinder by Vollrath fits into cylinder washing racks snugly. This heavy-duty, long-lasting cylinder keeps flatware vertical for washing and drying to improve overall results and speed the drying process, saving you valuable time.

Heavy-duty plastic construction
promises years of use

Designed to keep flatware vertical
during washing and drying for
improved results

Fits into cylinder washing racks

Made in the USA

NSF-certified

PRODUCT SPECIFICATIONS

Model Information

UPC	029419884636
-----	--------------

Unit Dimensions

(W) Width (IN)	4.5
----------------	-----

(D) Depth (IN)	4.5
----------------	-----

(H) Height (IN)	5.62
-----------------	------

(DI) Diameter	4.5
---------------	-----

(H) Height (CM)	14.3
-----------------	------

(DI) Diameter (CM)	11.4
--------------------	------

Weight

Weight (LB)	0.2111
-------------	--------

Construction

Color	Beige
-------	-------

Case Lot Measurement

Case Lot	36
----------	----

Case Width	13.3
------------	------

Case Height	9.5
-------------	-----

Case Length	17.2
-------------	------

Case Lot Cube (ft.)	1.26
---------------------	------

Case Lot Weight (lbs.)	7.6
------------------------	-----



8-compartment Traex® flatware basket in cocoa

With the Traex flatware basket by Vollrath, cleaning your flatware becomes an easy, efficient task. The unique design of these baskets allows two of them to fit in a full-size open rack, maximizing output, and the eight separate compartments keep your flatware organized. Perforated sides ensure superior cleaning and faster drying. These baskets nest within their families when not in use to simplify storage and save space, making these flatware baskets an excellent choice for any kitchen.

Two baskets fit in full-size open rack

Eight compartments keep flatware organized

Perforated sides ensure superior cleaning and faster drying

Handles allow easy transportation

Baskets nest within their families for compact storage

Made in the USA

NSF-certified

PRODUCT SPECIFICATIONS

Model Information

UPC	029419884667
-----	--------------

Unit Dimensions

Overall Dimensions (IN)	16.875 x 8.125 x 5.875
(W) Width (IN)	16.87
(D) Depth (IN)	8.12
(H) Height (IN)	5.87
Inside Compartment Width (IN)	3.5
Inside Compartment Depth (IN)	3.5
Inside Compartment Height (IN)	4.25
(W) Width (CM)	42.9
(D) Depth (CM)	20.6
(H) Height (CM)	14.9
Inside Compartment Width (CM)	8.9
Inside Compartment Depth (CM)	8.9
Inside Compartment Height (CM)	10.8
Size	8

Construction

Color	Cocoa
-------	-------

Case Lot Measurement

Case Lot	6
----------	---

Case Width	16.14
------------	-------

Case Height	10.1
-------------	------

Case Length	23.06
-------------	-------

Case Lot Cube (ft.)	2.18
---------------------	------

Case Lot Weight (lbs.)	12.0
------------------------	------



8-Compartment Flatware Basket

With the Vollrath® Traex flatware basket, cleaning your flatware becomes an easy, efficient task. The unique design of these baskets allows two of them to fit in a full-size open rack, maximizing output, and the eight separate compartments keep your flatware organized. Perforated sides ensure superior cleaning and faster drying, and the wire handles allow them to be easily transported. These baskets nest within their families when not in use to simplify storage and save space, making these flatware baskets an excellent choice for any kitchen.

Each compartment measures 3 9/16" x 3 9/16" x 4 1/4"

Two baskets fit in full-size open rack

Eight compartments keep flatware organized

Perforated sides ensure superior cleaning and faster drying

Handles allow easy transportation

Baskets nest within their families for compact storage

NSF-certified for food contact

Made in the USA

PRODUCT SPECIFICATIONS

Model Information

UPC	029419884674
-----	--------------

Unit Dimensions

Overall Dimensions (IN)	16.875 x 8.125 x 5.875
(W) Width (IN)	16.87
(D) Depth (IN)	8.12
(H) Height (IN)	5.87
Inside Compartment Width (IN)	3.5
Inside Compartment Depth (IN)	3.5
Inside Compartment Height (IN)	4.25
(W) Width (CM)	42.9
(D) Depth (CM)	20.6
(H) Height (CM)	14.9
Inside Compartment Width (CM)	8.9
Inside Compartment Depth (CM)	8.9
Inside Compartment Height (CM)	10.8
Size	8

Construction

Color	Cocoa
-------	-------

Case Lot Measurement

Case Lot	6
----------	---

Case Width	16.14
------------	-------

Case Height	10.1
-------------	------

Case Length	23.06
-------------	-------

Case Lot Cube (ft.)	2.18
---------------------	------

Case Lot Weight (lbs.)	13.35
------------------------	-------

PRODUCT **PARTS**

Name	Part #
------	--------

HANDLE FLATWARE BASKET	8070-1
------------------------	--------



Cutlery Boxes

Made in U.S.A.

PRODUCT SPECIFICATIONS

Model Information

UPC

029419884698

Unit Dimensions

Overall Dimensions (IN)	20.875 x 12.875 x 4.5
(W) Width (IN)	20.87
(D) Depth (IN)	12.87
(H) Height (IN)	4.5
(W) Width (CM)	53
(D) Depth (CM)	32.5
(H) Height (CM)	11.4

Construction

Number of Compartments	4
------------------------	---

Case Lot Measurement

Case Lot	12
Case Width	13.5
Case Height	20
Case Length	21.37
Case Lot Cube (ft.)	3.39
Case Lot Weight (lbs.)	25.15



Traex® cutlery box in black

The Traex cutlery box by Vollrath features four rounded compartments for organizing and storing your cutlery or flatware. The durable polyethylene material provides years of reliable service and built-in handles ensure easy transportation. You can also use this box for condiments or straw storage, making this an excellent, versatile option for your kitchen.

Four rounded compartments keep cutlery organized

Built-in handles ensure easy transportation

Polyethylene material is durable and long-lasting

Made in the USA

PRODUCT **SPECIFICATIONS**

Model Information

UPC	029419884704
-----	--------------

Unit Dimensions

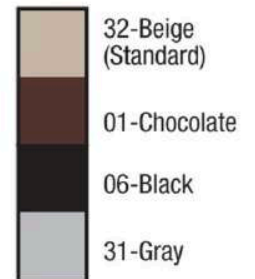
Overall Dimensions (IN)	20.875 x 12.875 x 4.5
(W) Width (IN)	20.87
(D) Depth (IN)	12.87
(H) Height (IN)	4.5
(W) Width (CM)	53
(D) Depth (CM)	32.5
(H) Height (CM)	11.4

Construction

Number of Compartments	4
------------------------	---

Case Lot Measurement

Case Lot	12
Case Width	13.25
Case Height	20.5
Case Length	21.5
Case Lot Cube (ft.)	3.38
Case Lot Weight (lbs.)	25.16



Four-compartment Traex® cutlery box in gray

The cutlery box by Vollrath features four rounded compartments for organizing and storing your cutlery or flatware. The durable polyethylene material provides years of reliable service, and built-in handles ensure easy transportation. You can also use this box for condiments or straw storage, making this an excellent, versatile option for your kitchen.

Four rounded compartments keep cutlery organized

Built-in handles ensure easy transportation

Polyethylene material is durable and long-lasting

Made in the USA

PRODUCT **SPECIFICATIONS**

Model Information

UPC	029419884711
-----	--------------

Unit Dimensions

Overall Dimensions (IN)	20.875 x 12.875 x 4.5
(W) Width (IN)	20.87
(D) Depth (IN)	12.87
(H) Height (IN)	4.5
(W) Width (CM)	53
(D) Depth (CM)	32.5
(H) Height (CM)	11.4

Construction

Color	Gray
Number of Compartments	4

Case Lot Measurement

Case Lot	12
Case Width	13.5
Case Height	20.5
Case Length	21.37
Case Lot Cube (ft.)	3.39
Case Lot Weight (lbs.)	25.15



Half-size Traex® flatware soak and washing tub

Allow your flatware to soak thoroughly before washing with the Traex soak and washing tub by Vollrath. This half-size tub holds plenty of flatware at one time while keeping it all together and out of the way. The durable plastic construction promises years of use, and the molded handles on each side ensure easy gripping and transportation, making this soak and washing tub an excellent choice for any kitchen.

Durable plastic construction promises years of use

Fits plenty of flatware for convenient soaking

Molded handles offer an easy grip for convenient transportation

Made in the USA
NSF-certified

PRODUCT **SPECIFICATIONS**

Model Information

UPC	029419884728
-----	--------------

Unit Dimensions

Overall Dimensions (IN)	24.5 x 13.375 x 5.25
(W) Width (IN)	24.5
(D) Depth (IN)	13.37
(H) Height (IN)	5.25
(W) Width (CM)	62.2
(D) Depth (CM)	34
(H) Height (CM)	13.3

Construction

Color	Cocoa
-------	-------

Case Lot Measurement

Case Lot	1
Case Width	13.94
Case Height	5.88
Case Length	25.44
Case Lot Cube (ft.)	1.21



Flatware Soak & Washing Systems

Mesh surface on rack bottom keeps flatware and smaller items in the rack

PRODUCT SPECIFICATIONS

Model Information

UPC

029419884742

Unit Dimensions

Overall Dimensions (IN)	19.75 x 10 x 3.812
(W) Width (IN)	19.75
(D) Depth (IN)	10
(H) Height (IN)	3.81
(W) Width (CM)	50
(D) Depth (CM)	25.4
(H) Height (CM)	9.7

Construction

Color	Cocoa
-------	-------

Case Lot Measurement

Case Lot	1
Case Width	19.88
Case Height	5.94
Case Length	11.44
Case Lot Cube (ft.)	0.78
Case Lot Weight (lbs.)	3.4



Half-size flatware soak-and-wash system with tub and Traex® open rack in cocoa

Allow your flatware to soak thoroughly before washing with the soak-and-wash system by Vollrath. This system comes with a half-size tub and Traex open rack, providing everything you need to get your flatware cleaner than ever. The rack holds plenty of flatware at one time while keeping it all together and out of the way. The durable construction promises years of use, and the molded handles on each side ensure easy gripping and transportation, making this soak-and-wash tub an excellent choice for any kitchen.

- Durable construction promises years of use

Fits plenty of flatware for convenient soaking

Molded handles offer an easy grip for convenient transportation
- System comes with one tub and one Traex open rack

Made in the USA

NSF-certified

PRODUCT **SPECIFICATIONS**

Model Information

UPC	029419884759
-----	--------------

Unit Dimensions

Overall Dimensions (IN)	24.5 x 13.375 x 5.25
(W) Width (IN)	24.5
(D) Depth (IN)	13.37
(H) Height (IN)	5.25
(W) Width (CM)	62.2
(D) Depth (CM)	34
(H) Height (CM)	13.3

Construction

Color	Cocoa
-------	-------

Case Lot Measurement

Case Lot	1
Case Width	13.94

Case Height	5.88
Case Length	25.44
Case Lot Cube (ft.)	1.21
Case Lot Weight (lbs.)	3.4



Flatware Soak & Washing Systems

Mesh surface on rack bottom keeps flatware and smaller items in the rack

PRODUCT SPECIFICATIONS

Model Information

UPC

029419884766

Unit Dimensions

Overall Dimensions (IN)	24.5 x 13.375 x 5.25
(W) Width (IN)	24.5
(D) Depth (IN)	13.37
(H) Height (IN)	5.25
(W) Width (CM)	62.2
(D) Depth (CM)	34
(H) Height (CM)	13.3

Construction

Color	Cocoa
-------	-------

Case Lot Measurement

Case Lot	1
Case Width	13.94
Case Height	5.88
Case Length	25.44
Case Lot Cube (ft.)	1.21
Case Lot Weight (lbs.)	5.0



Flatware Soak & Washing Systems

Mesh surface on rack bottom keeps flatware and smaller items in the rack

PRODUCT SPECIFICATIONS

Model Information

UPC

029419884773

Unit Dimensions

Overall Dimensions (IN)	24 x 24.375 x 5.25
(W) Width (IN)	24
(D) Depth (IN)	24.37
(H) Height (IN)	5.25
(W) Width (CM)	61
(D) Depth (CM)	61.9
(H) Height (CM)	13.3

Construction

Color	Cocoa
-------	-------

Case Lot Measurement

Case Lot	1
Case Width	24.5
Case Height	6.25
Case Length	25
Case Lot Cube (ft.)	2.26
Case Lot Weight (lbs.)	6.2



Full-size flatware soak-and-wash system with tub and Traex® open rack in cocoa

Allow your flatware to soak thoroughly before washing with the soak-and-wash system by Vollrath. This system comes with a full-size tub and Traex open rack, providing everything you need to get your flatware cleaner than ever. The rack holds plenty of flatware at one time while keeping it all together and out of the way. The durable construction promises years of use, and the molded handles on each side ensure easy gripping and transportation, making this soak-and-wash tub an excellent choice for any kitchen.

Durable construction promises years of use	System comes with one tub and one Traex open rack
Fits plenty of flatware for convenient soaking	Made in the USA
Molded handles offer an easy grip for convenient transportation	NSF-certified

PRODUCT **SPECIFICATIONS**

Model Information

UPC	029419884780
-----	--------------

Unit Dimensions

Overall Dimensions (IN)	24.5 x 24.375 x 5.25
(W) Width (IN)	24.5
(D) Depth (IN)	24.37
(H) Height (IN)	5.25
(W) Width (CM)	62.2
(D) Depth (CM)	61.9
(H) Height (CM)	13.3

Construction

Color	Cocoa
-------	-------

Case Lot Measurement

Case Lot	1
Case Width	25

Case Height	6
Case Length	24
Case Lot Cube (ft.)	2.08
Case Lot Weight (lbs.)	10.0



	13-clear
	01-Chocolate
	05-White
	06-Black
	31-Gray

Dish Box Covers

Dish Box Covers

PRODUCT SPECIFICATIONS

Model Information

UPC	029419885220
-----	--------------

Unit Dimensions

Overall Dimensions (IN)	22.125 x 15.625 x 2.5
(W) Width (IN)	22.12
(D) Depth (IN)	15.62

(H) Height (IN)	2.5
-----------------	-----

(W) Width (CM)	56.2
(D) Depth (CM)	39.7
(H) Height (CM)	6.4

Construction

Color	Black
-------	-------

Case Lot Measurement

Case Lot	6
Case Width	16.38
Case Height	11.75
Case Length	22.42
Case Lot Cube (ft.)	2.5
Case Lot Weight (lbs.)	9.25



	13-clear
	01-Chocolate
	05-White
	06-Black
	31-Gray

Dish Box Covers

Dish Box Covers

PRODUCT SPECIFICATIONS

Model Information

UPC	029419885237
-----	--------------

Unit Dimensions

Overall Dimensions (IN)	22.125 x 15.625 x 2.5
(W) Width (IN)	22.12
(D) Depth (IN)	15.62

(H) Height (IN)	2.5
-----------------	-----

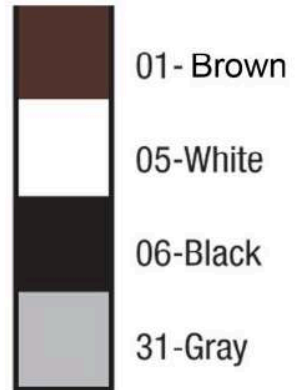
(W) Width (CM)	56.2
(D) Depth (CM)	39.7
(H) Height (CM)	6.4

Construction

Color	Gray
-------	------

Case Lot Measurement

Case Lot	6
Case Width	16.38
Case Height	11.75
Case Length	22.42
Case Lot Cube (ft.)	2.5
Case Lot Weight (lbs.)	9.25



Dish Box Covers

Dish Box Covers

PRODUCT SPECIFICATIONS

Model Information

UPC

029419886104

Unit Dimensions

(W) Width (IN)	20
(D) Depth (IN)	15
(H) Height (IN)	0
(W) Width (CM)	50.8
(D) Depth (CM)	38.1

Construction

Color	Brown
-------	-------

Case Lot Measurement

Case Lot	12
Case Width	9.5
Case Height	16.37
Case Length	21.75
Case Lot Cube (ft.)	1.96

Case Lot Weight (lbs.)	15.99
------------------------	-------



Dish Box Covers

The Vollrath® Traex bus box cover easily secures dishes inside the bus box, preventing messes and creating a smooth appearance for your bus station. Made of durable polypropylene, this white bus box cover will provide a clean, fresh look for years. The recessed design allows you to easily stack your bus boxes for superior storage and transportation, making this bus box cover an excellent addition to any kitchen.

Made of durable polypropylene

Secures dishes inside bus boxes

White color creates a clean, fresh look

Recessed design allows for easy stacking

PRODUCT **SPECIFICATIONS**

Model Information

UPC	029419886111
-----	--------------

Unit Dimensions

(W) Width (IN)	20
(D) Depth (IN)	15
(H) Height (IN)	0
(W) Width (CM)	50.8
(D) Depth (CM)	38.1

Construction

Color	White
-------	-------

Case Lot Measurement

Case Lot	12
Case Width	9.5
Case Height	16.37
Case Length	21.75
Case Lot Cube (ft.)	1.96

Case Lot Weight (lbs.)	15.99
------------------------	-------



Traex® bus box cover in black

The Traex bus box cover by Vollrath secures dishes inside the bus box, preventing messes and creating a smooth appearance for your bus station. Made of durable polypropylene, this neutral black bus box cover will last for years. The recessed design allows stacking for superior storage and transportation, making this bus box cover an excellent addition to any kitchen.

Made of durable polypropylene

Secures dishes inside bus boxes

Neutral black color blends in with any kitchen design aesthetic

Recessed design allows for easy stacking

Made in the USA

NSF-certified

PRODUCT **SPECIFICATIONS**

Model Information

UPC	029419886128
-----	--------------

Unit Dimensions

(W) Width (IN)	20
(D) Depth (IN)	15
(H) Height (IN)	0
(W) Width (CM)	50.8
(D) Depth (CM)	38.1

Construction

Color	Black
-------	-------

Case Lot Measurement

Case Lot	12
Case Width	9.5
Case Height	16.37
Case Length	21.75
Case Lot Cube (ft.)	1.96
Case Lot Weight (lbs.)	15.99



Dish Box Covers

The Vollrath® Traex bus box cover easily secures dishes inside the bus box, preventing messes and creating a smooth appearance for your bus station. Made of durable polypropylene, this neutral gray bus box cover will last for years. The recessed design allows you to easily stack your bus boxes for superior storage and transportation, making this bus box cover an excellent addition to any kitchen.

Made of durable polypropylene

Secures dishes inside bus boxes

Neutral gray blends in with any kitchen design aesthetic

Recessed design allows for easy stacking

PRODUCT **SPECIFICATIONS**

Model Information

UPC	029419886135
-----	--------------

Unit Dimensions

(W) Width (IN)	20
(D) Depth (IN)	15
(H) Height (IN)	0
(W) Width (CM)	50.8
(D) Depth (CM)	38.1

Construction

Color	Gray
-------	------

Case Lot Measurement

Case Lot	12
Case Width	9.5
Case Height	16.37
Case Length	21.75
Case Lot Cube (ft.)	1.96
Case Lot Weight (lbs.)	15.99



Signature universal bus box cover in black

The Signature universal bus box cover by Vollrath secures dishes inside the bus box, preventing messes and creating a smooth appearance for your bus station. Made of durable polypropylene, this neutral black bus box cover will last for years. The recessed design allows stacking for superior storage and transportation, making this bus box cover an excellent addition to any kitchen.

Made of durable polypropylene

Secures dishes inside bus boxes

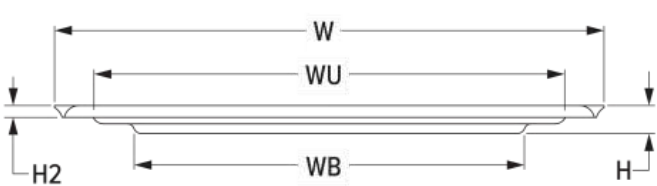
Neutral black blends in with any kitchen design aesthetic

Recessed design allows for easy stacking

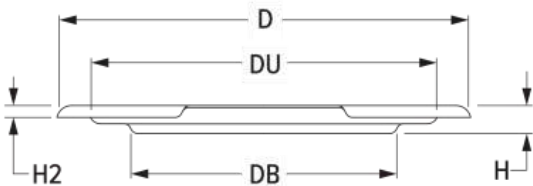
Made in the USA

NSF-certified

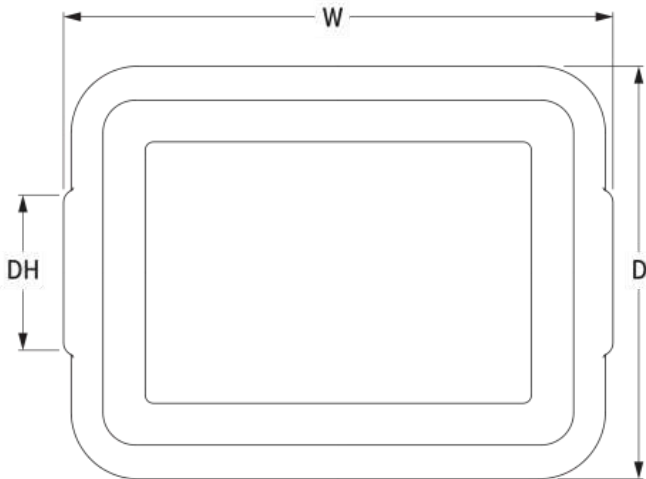
PRODUCT SPECIFICATIONS



FRONT VIEW



SIDE VIEW



TOP VIEW

Model Information

UPC

029419271443

Unit Dimensions

Overall Dimensions (IN) 21.125 x 15.781 x 1

(W) Width (IN) 21.12

(WU) Usable Width (IN) 18.094

(WB) Width Base (IN) 15

(D) Depth (IN) 15.78

(DU) Usable Depth (IN) 13.312

(DB) Depth Base (IN) 10.25

(H) Height (IN) 1

(H2) Secondary Height (IN) 0.375

(W) Width (CM) 53.7

(WU) Usable Width (CM) 46

(WB) Width Base (CM) 38.1

(D) Depth (CM) 40.1

(DU) Usable Depth (CM) 33.8

(DB) Depth Base (CM) 26

(H) Height (CM) 2.5

(H2) Secondary Height (CM) 1

(DH) Handle Depth (CM) 6

Volume

Max Dish Depth (IN) 15.2

Construction

Color	Black
Number of Compartments	20

Case Lot Measurement

Case Lot	12
Case Width	22.125
Case Height	4.5
Case Length	16.5
Case Lot Cube (ft.)	0.95
Case Lot Weight (lbs.)	5.76



Signature universal bus box cover in natural

The Signature universal bus box cover by Vollrath secures dishes inside the bus box, preventing messes and creating a smooth appearance for your bus station. Made of durable polypropylene, this neutral black bus box cover will last for years. The recessed design allows stacking for superior storage and transportation, making this bus box cover an excellent addition to any kitchen.

Made of durable polypropylene

Secures dishes inside bus boxes

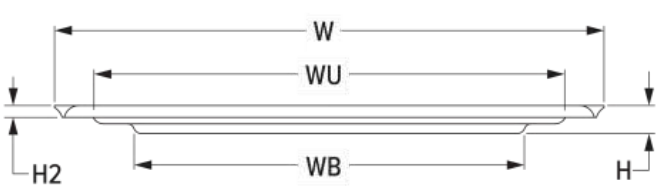
Neutral black blends in with any
kitchen design aesthetic

Recessed design allows for easy stacking

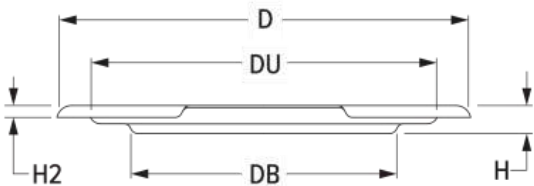
Made in the USA

NSF-certified

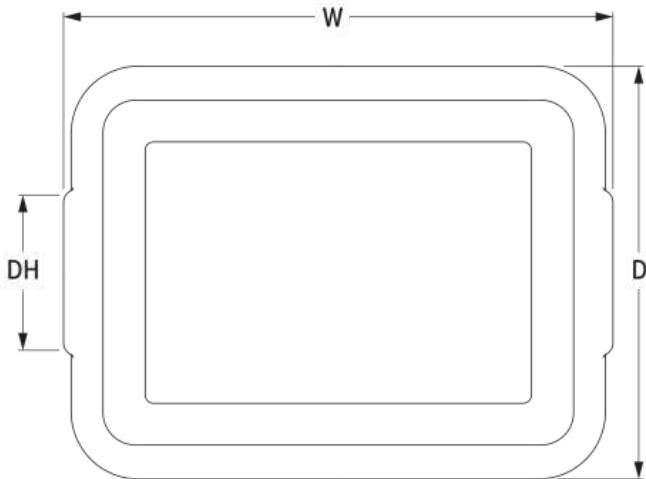
PRODUCT SPECIFICATIONS



FRONT VIEW



SIDE VIEW



TOP VIEW

Model Information

UPC

029419091034

Unit Dimensions

Overall Dimensions (IN) 21.125 x 15.781 x 1

(W) Width (IN) 21.12

(WU) Usable Width (IN) 18.094

(WB) Width Base (IN) 15

(D) Depth (IN) 15.78

(DU) Usable Depth (IN) 13.312

(DB) Depth Base (IN) 10.25

(H) Height (IN) 1

(H2) Secondary Height (IN) 0.375

(W) Width (CM) 53.7

(WU) Usable Width (CM) 46

(WB) Width Base (CM) 38.1

(D) Depth (CM) 40.1

(DU) Usable Depth (CM) 33.8

(DB) Depth Base (CM) 26

(H) Height (CM) 2.5

(H2) Secondary Height (CM) 1

(DH) Handle Depth (CM) 6

Volume

Max Dish Depth (IN) 15.2

Construction

Color	Natural
Number of Compartments	20

Case Lot Measurement

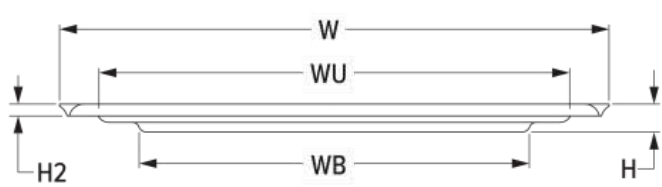
Case Lot	12
Case Width	16.5
Case Height	4.25
Case Length	21.75
Case Lot Cube (ft.)	0.89
Case Lot Weight (lbs.)	12.6



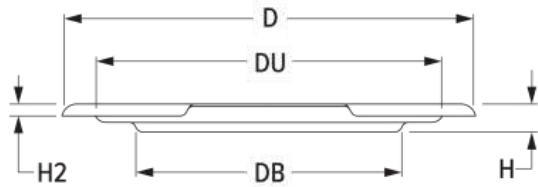
Dish Box Covers

Dish Box Covers

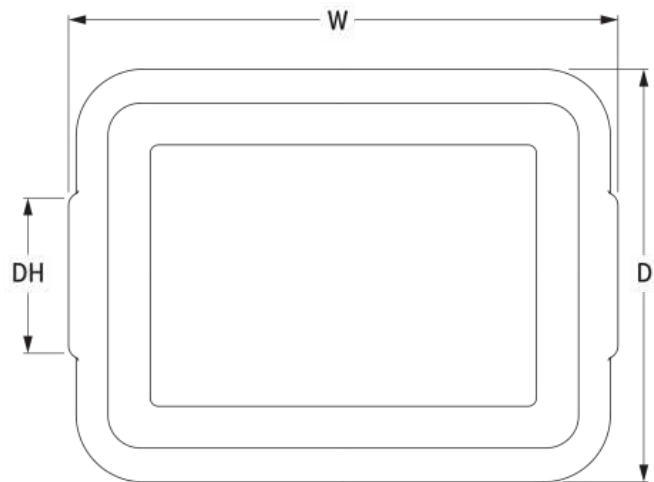
PRODUCT SPECIFICATIONS



FRONT VIEW



SIDE VIEW



TOP VIEW

Model Information

UPC	029419091058
-----	--------------

Unit Dimensions

Overall Dimensions (IN)	21.125 x 15.781 x 1
(W) Width (IN)	21.12

(WU) Usable Width (IN)	18.094
(WB) Width Base (IN)	15
(D) Depth (IN)	15.78
(DU) Usable Depth (IN)	13.312
(DB) Depth Base (IN)	10.25
(H) Height (IN)	1
(H2) Secondary Height (IN)	0.375
(W) Width (CM)	53.7
(WU) Usable Width (CM)	46
(WB) Width Base (CM)	38.1
(D) Depth (CM)	40.1
(DU) Usable Depth (CM)	33.8
(DB) Depth Base (CM)	26
(H) Height (CM)	2.5
(H2) Secondary Height (CM)	1

Construction

Color	Gray
Number of Compartments	20

Case Lot Measurement

Case Lot	12
Case Width	16.5
Case Height	4.25
Case Length	21.75
Case Lot Cube (ft.)	0.89



Perforated drain box in gray for silverware soak system

Thoroughly soak your flatware before washing with the perforated drain box by Vollrath. This perforated box nests inside a bus box (Vollrath® item number 52612) which keeps all your flatware together and prepares them for washing. The molded handles on each side ensure easy gripping and let you avoid contact with harsh chemicals and sharp knives for increased safety.

Durable plastic construction is built for years of use

Nests inside bus box for soaking prior to washing (Vollrath item number 52612)

Comfortable molded handles allow box to be easily inserted and removed from the bus box, preventing contact with harsh chemicals or sharp knives

Made in the USA

PRODUCT SPECIFICATIONS

Model Information

UPC	029419122622
-----	--------------

Unit Dimensions

Overall Dimensions (IN)	20 x 15 x 5
(W) Width (IN)	20
(D) Depth (IN)	15
(H) Height (IN)	5
(W) Width (CM)	50.8
(D) Depth (CM)	38.1
(H) Height (CM)	12.7

Construction

Color	Gray
-------	------

Case Lot Measurement

Case Lot	6
Case Width	16
Case Height	11
Case Length	22

Case Lot Cube (ft.)	2.24
---------------------	------

Case Lot Weight (lbs.)	10.08
------------------------	-------



Silverware Soak System

Allow your flatware to thoroughly soak before washing with the Vollrath® silverware soak system. The box with drainage holes easily nests inside the tub, allowing the flatware inside to soak before washing. The molded handles on each side ensure easy gripping and transportation, while letting you avoid contact with harsh chemicals and sharp knives for increased safety. This system includes the drain box (part product number 52617), bus box (part product number 52612), and cover (part product number 52424), providing everything you need for use.

Durable plastic construction is built for years of use

Box with drainage holes easily nests inside tub for soaking prior to washing

Comfortable grip handles allow the box to be easily inserted and removed from the tub, preventing contact with harsh chemicals or sharp knives

System includes Vollrath drain box (52617), bus box (52612), and cover (52424)

Made in the USA



PRODUCT **SPECIFICATIONS**

Model Information

UPC	029419118809
-----	--------------

Unit Dimensions

(W) Width (IN)	20
----------------	----

(D) Depth (IN)	15
(H) Height (IN)	8.000004
(W) Width (CM)	50.8
(D) Depth (CM)	38.1

Case Lot Measurement

Case Lot	1
Case Width	16.5
Case Height	8
Case Length	23
Case Lot Cube (ft.)	1.76
Case Lot Weight (lbs.)	5.2



Plastic vertical flatware cylinder in black

The plastic flatware cylinder by Vollrath fits into cylinder washing racks snugly. This heavy-duty, long-lasting cylinder keeps flatware vertical for washing and drying to improve overall results and speed the drying process, saving you valuable time.

Heavy-duty plastic construction
promises years of use

Designed to keep flatware vertical
during washing and drying for
improved results

Fits into cylinder washing racks

Made in the USA

NSF-certified

PRODUCT SPECIFICATIONS

Model Information

UPC	029419304523
-----	--------------

Unit Dimensions

(W) Width (IN)	4.3
(D) Depth (IN)	4.3
(H) Height (IN)	5.62
(DI) Diameter	3.75
(H) Height (CM)	14.3
(DI) Diameter (CM)	9.5

Weight

Weight (LB)	0.2834
-------------	--------

Construction

Color	Black
-------	-------

Case Lot Measurement

Case Lot	12
Case Width	12.5
Case Height	6.25
Case Length	16

Case Lot Cube (ft.)

0.72

Case Lot Weight (lbs.)

3.4



8-Compartment Flatware Basket

With the Vollrath® Signature flatware basket, cleaning your flatware becomes an easy, efficient task. The unique design of these baskets allows two of them to fit in a full-size open rack, maximizing output, and the eight separate compartments keep your flatware organized. Perforated sides ensure superior cleaning and faster drying, saving valuable time. These baskets nest within their families when not in use to simplify storage and save space, making these flatware baskets an excellent choice for any kitchen.

Each compartment measures 3 9/16" x 3 9/16" x 4 1/4"

Two baskets fit in full-size open rack

Eight compartments keep flatware organized

Perforated sides ensure superior cleaning and faster drying

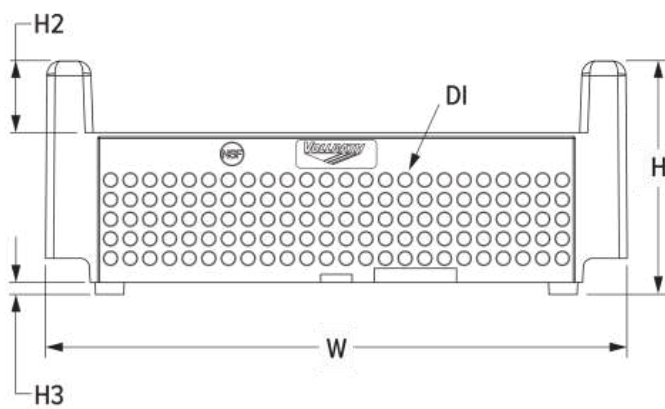
Handles allow easy transportation

Baskets nest within their families for compact storage

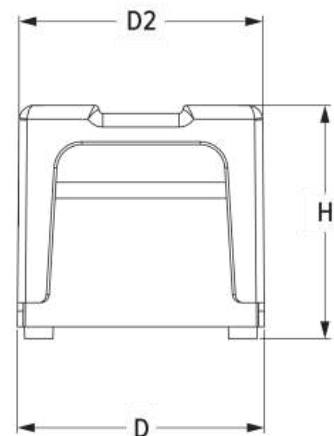
NSF-certified for food contact

Made in the USA

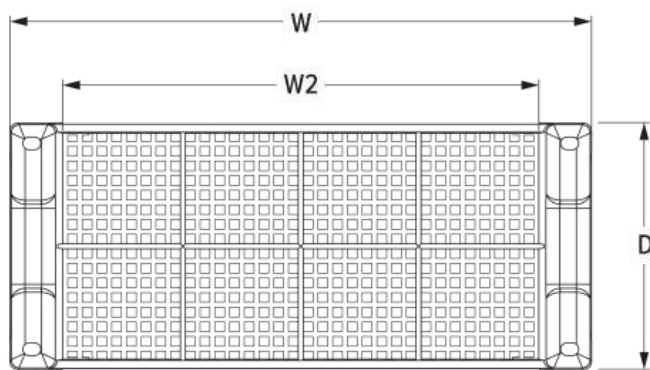
PRODUCT SPECIFICATIONS



FRONT VIEW



SIDE VIEW



TOP VIEW

Model Information

UPC	029419092420
-----	--------------

Unit Dimensions

Overall Dimensions (IN)	18.11 x 7.718 x 7.27
(W) Width (IN)	18.11
(W2) Secondary Width (IN)	14.832
(D) Depth (IN)	7.71
(D2) Secondary Depth (IN)	7.61
(H) Height (IN)	7.27
(H2) Secondary Height (IN)	4.665
(H3) Additional Height (IN)	0.375
(DI) Diameter	0.4
Inside Compartment Width (IN)	3.562
Inside Compartment Depth (IN)	3.562
Inside Compartment Height (IN)	4.25
(W) Width (CM)	46
(W2) Secondary Width (CM)	37.7
(D) Depth (CM)	19.6
(D2) Secondary Depth (CM)	19.3
(H) Height (CM)	18.5
(H2) Secondary Height (CM)	11.8
(H3) Additional Height (CM)	1
(DI) Diameter (CM)	1
Inside Compartment Width (CM)	9
Inside Compartment Depth (CM)	9
Inside Compartment Height (CM)	10.8

Size	8
------	---

Construction

Color	Light Green
-------	-------------

Case Lot Measurement

Case Lot	4
----------	---

Case Width	18.5
------------	------

Case Height	15.25
-------------	-------

Case Length	16
-------------	----

Case Lot Cube (ft.)	2.61
---------------------	------

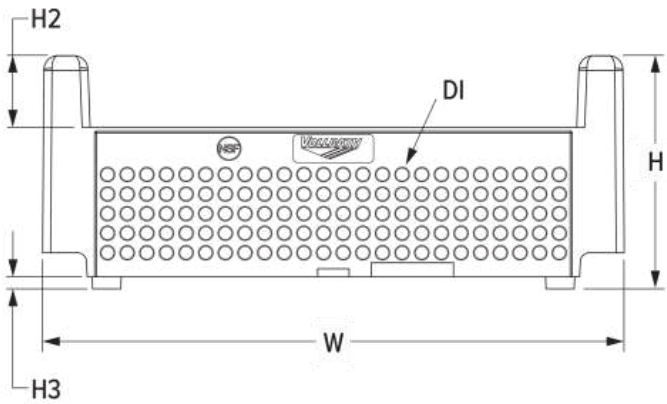
Case Lot Weight (lbs.)	11.24
------------------------	-------



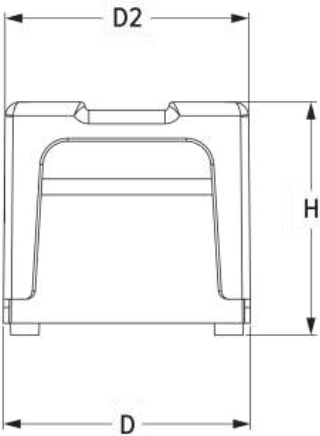
8-Compartment Flatware Basket

Made in U.S.A., NSF Certified

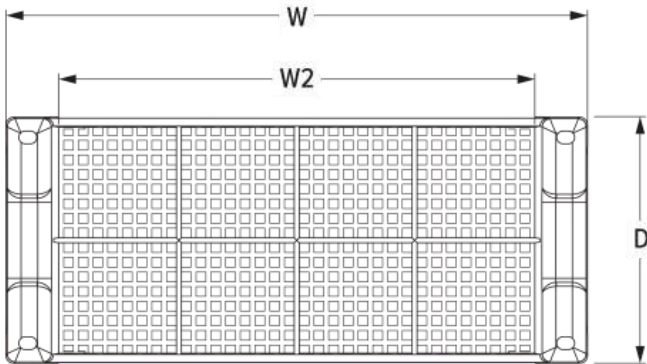
PRODUCT SPECIFICATIONS



FRONT VIEW



SIDE VIEW



TOP VIEW

Model Information

UPC	029419092437
-----	--------------

Unit Dimensions

Overall Dimensions (IN)	18.11 x 7.718 x 7.27
(W) Width (IN)	18.11

(W2) Secondary Width (IN)	14.832
(D) Depth (IN)	7.71
(D2) Secondary Depth (IN)	7.61
(H) Height (IN)	7.27
(H2) Secondary Height (IN)	4.665
(H3) Additional Height (IN)	0.375
(DI) Diameter	0.4
Inside Compartment Width (IN)	3.562
Inside Compartment Depth (IN)	3.562
Inside Compartment Height (IN)	4.25
(W) Width (CM)	46
(W2) Secondary Width (CM)	37.7
(D) Depth (CM)	19.6
(D2) Secondary Depth (CM)	19.3
(H) Height (CM)	18.5
(H2) Secondary Height (CM)	11.8
(H3) Additional Height (CM)	1
(DI) Diameter (CM)	1
Inside Compartment Width (CM)	9
Inside Compartment Depth (CM)	9
Inside Compartment Height (CM)	10.8
Size	8

Construction

Color	Light Green
-------	-------------

Case Lot Measurement

Case Lot	4
Case Width	18.5
Case Height	15.5
Case Length	16
Case Lot Cube (ft.)	2.66
Case Lot Weight (lbs.)	12.64



Plastic vertical flatware cylinder in white

The plastic flatware cylinder by Vollrath fits into cylinder washing racks snugly. This heavy-duty, long-lasting cylinder keeps flatware vertical for washing and drying to improve overall results and speed the drying process, saving you valuable time.

Heavy-duty plastic construction
promises years of use

Designed to keep flatware vertical
during washing and drying for
improved results

Fits into cylinder washing racks

Made in the USA

NSF-certified

PRODUCT SPECIFICATIONS

Model Information

UPC	029419092444
-----	--------------

Unit Dimensions

(W) Width (IN)	4.4
(D) Depth (IN)	4.4
(H) Height (IN)	5.62
(DI) Diameter	3.75
(H) Height (CM)	14.3
(DI) Diameter (CM)	9.5

Weight

Weight (LB)	0.34
-------------	------

Case Lot Measurement

Case Lot	12
Case Width	12.5
Case Height	6.5
Case Length	16
Case Lot Cube (ft.)	0.76
Case Lot Weight (lbs.)	4.08



Vertical Flatware Washing System, Cylinders and Storage

The Vollrath® plastic flatware cylinder fits snugly into the cylinder washing racks. These heavy-duty, long lasting cylinders keep flatware vertical for washing and drying to improve overall results and speed the drying process, saving you valuable time.

Heavy-duty construction is built for years of use

NSF-certified

Perfectly fit into cylinder washing rack and Vollrath silv-a-tainer

Made in the USA

PRODUCT **SPECIFICATIONS**

Model Information

UPC	029419092451
-----	--------------

Unit Dimensions

(W) Width (IN)	4.33
(D) Depth (IN)	4.33
(H) Height (IN)	5.62
(DI) Diameter	3.75
(H) Height (CM)	14.3
(DI) Diameter (CM)	9.5

Weight

Weight (LB)	0.28
-------------	------

Construction

Color	White
-------	-------

Case Lot Measurement

Case Lot	12
Case Width	12.5
Case Height	6.102366
Case Length	16
Case Lot Cube (ft.)	0.72
Case Lot Weight (lbs.)	3.36



Vertical Flatware Washing System, Cylinders and Storage

Store, organize and dry all your silverware with the Vollrath® six-cylinder plastic silv-a-tainer. This unit has six slots designed to hold flatware cylinders, making this an ideal product for offering silverware to customers or simplifying storage in the kitchen. The smooth drop-in design allows you to remove and replace the cylinders as often as needed, and the solid base maintains stability. An angled display ensures visibility, allowing anyone to quickly see and take what they need, while the rounded edges give this silv-a-tainer a sleek appearance.

Six cylinder compartments allow you to keep your silverware organized

Heavy-duty construction is built for years of use

Ideal for storing, organizing and drying large amounts of silverware at once

Compatible with Vollrath flatware cylinders, sold separately

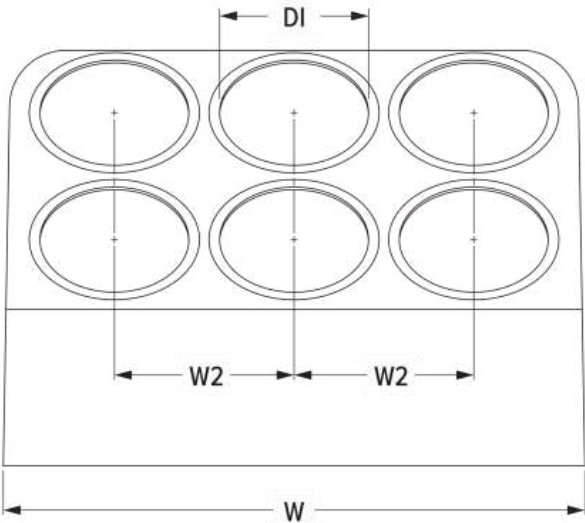
Sturdy base prevents the unit from tipping over

Rolled edges ensure safety

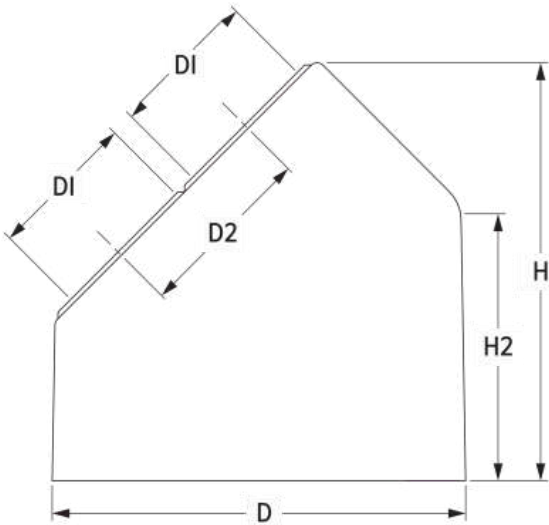
Made in the USA



PRODUCT SPECIFICATIONS



FRONT VIEW



SIDE VIEW

Model Information

UPC	029419092468
-----	--------------

Unit Dimensions

Overall Dimensions (IN)	15.375 x 10.96 x 11.065
-------------------------	-------------------------

(W) Width (IN)	15.37
----------------	-------

(W2) Secondary Width (IN)	4.75
---------------------------	------

(D) Depth (IN)	10.96
----------------	-------

(D2) Secondary Depth (IN)	4.75
---------------------------	------

(H) Height (IN)	11.06
-----------------	-------

(H2) Secondary Height (IN)	7.07
----------------------------	------

(DI) Diameter	3.95
---------------	------

(W) Width (CM)	39.1
----------------	------

(W2) Secondary Width (CM)	12.1
---------------------------	------

(D) Depth (CM)	27.8
----------------	------

(D2) Secondary Depth (CM)	12.1
(H) Height (CM)	28.1
(H2) Secondary Height (CM)	18
(DI) Diameter (CM)	10

Case Lot Measurement

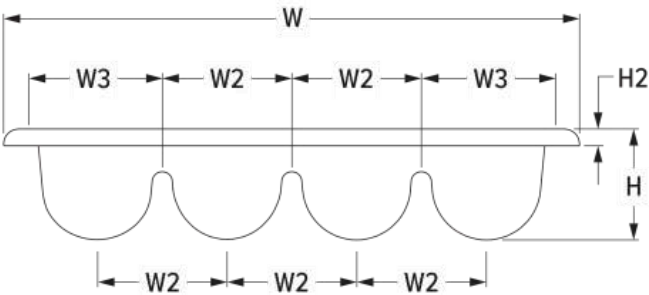
Case Lot	1
Case Width	11.5
Case Height	11.81103
Case Length	15.5
Case Lot Cube (ft.)	1.21
Case Lot Weight (lbs.)	2.82



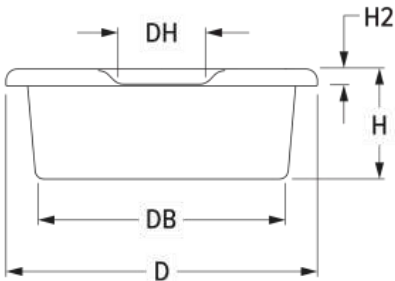
Cutlery Boxes

Made in U.S.A.

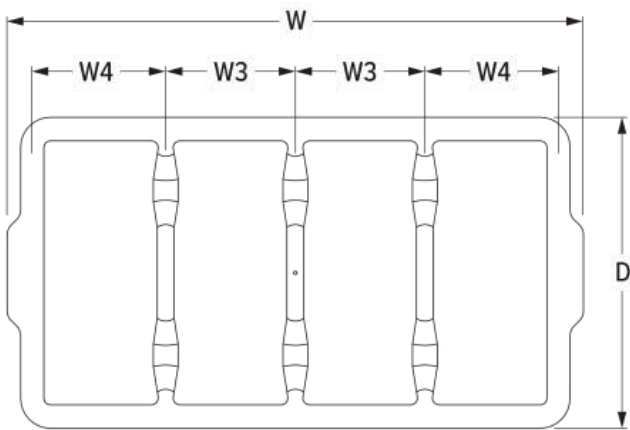
PRODUCT SPECIFICATIONS



FRONT VIEW



SIDE VIEW



TOP VIEW

Model Information

UPC

029419092512

Unit Dimensions

Overall Dimensions (IN)

21.317 x 11.562 x 4

(W) Width (IN)

21.31

(W2) Secondary Width (IN)	4.795
(W3) Additional Width (IN)	5.375
(D) Depth (IN)	11.56
(DB) Depth Base (IN)	9.188
(H) Height (IN)	4
(DH) Handle Depth (IN)	3.25
(W) Width (CM)	54.1
(W2) Secondary Width (CM)	12.2
(W3) Additional Width (CM)	13.7
(D) Depth (CM)	29.4
(DB) Depth Base (CM)	23.3
(H) Height (CM)	10.2
(DH) Handle Depth (CM)	8.3

Construction

Color	Gray
-------	------

Case Lot Measurement

Case Lot	6
Case Width	11.75
Case Height	14
Case Length	21.5
Case Lot Cube (ft.)	2.05
Case Lot Weight (lbs.)	10.48



Cutlery Bins

The Vollrath® cutlery bin features four compartments for organizing and storing your cutlery or flatware. The durable polypropylene material provides years of reliable service, and built-in handles ensure easy transportation, making this an excellent, reliable solution for your cutlery storage.

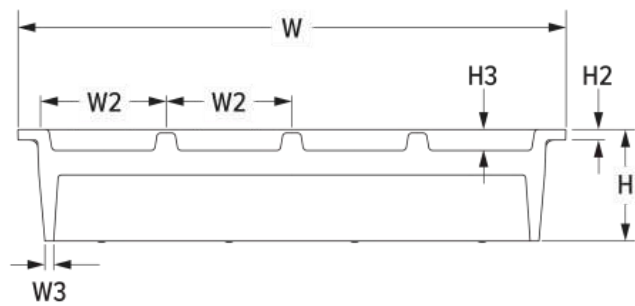
Four compartments keep cutlery organized

Polypropylene material is durable and long lasting

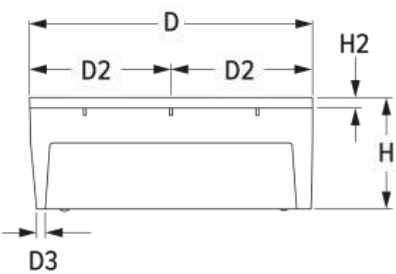
Built-in handles ensure easy transportation

Made in the USA

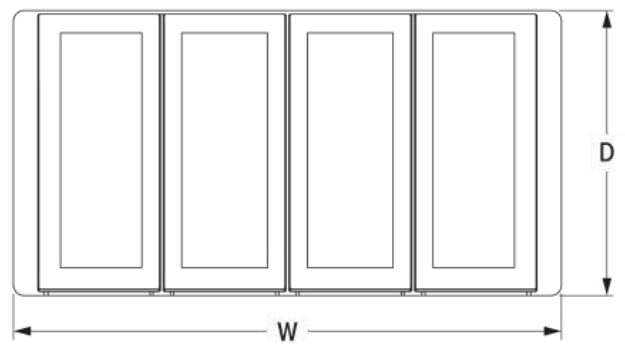
PRODUCT SPECIFICATIONS



FRONT VIEW



FRONT VIEW



TOP VIEW

Model Information

UPC

029419092529

Unit Dimensions

Overall Dimensions (IN)

19.624 x 10.25 x 4

(W) Width (IN)

19.62

(W2) Secondary Width (IN)	4.5
(W3) Additional Width (IN)	0.313
(D) Depth (IN)	10.25
(D2) Secondary Depth (IN)	3.125
(D3) Additional Depth (IN)	0.313
(H) Height (IN)	4
(H2) Secondary Height (IN)	0.375
(H3) Additional Height (IN)	0.75
(W) Width (CM)	49.8
(W2) Secondary Width (CM)	11.4
(W3) Additional Width (CM)	0.8
(D) Depth (CM)	26
(D2) Secondary Depth (CM)	7.9
(D3) Additional Depth (CM)	0.8
(H) Height (CM)	10.2
(H2) Secondary Height (CM)	1
(H3) Additional Height (CM)	1.9

Case Lot Measurement

Case Lot	6
Case Width	20.25
Case Height	25.25
Case Length	11
Case Lot Cube (ft.)	3.26
Case Lot Weight (lbs.)	14.94



Cutlery Boxes

The Vollrath® cutlery box features four rounded compartments for organizing and storing your cutlery or flatware. The durable polyethylene material provides years of reliable service and built-in handles ensure easy transportation. You can also use this box for condiments or straw storage, making this an excellent, versatile option for your kitchen.

Four rounded compartments keep cutlery organized

Built-in handles ensure easy transportation

Polyethylene material is durable and long lasting

Made in the USA

PRODUCT SPECIFICATIONS

Model Information

UPC

029419092536

Unit Dimensions

Overall Dimensions (IN)	21.625 x 11.875 x 3.75
(W) Width (IN)	21.62
(D) Depth (IN)	11.87
(H) Height (IN)	3.75
(W) Width (CM)	54.9
(D) Depth (CM)	30.2
(H) Height (CM)	9.5

Construction

Color	Black
-------	-------

Case Lot Measurement

Case Lot	12
Case Width	12.25
Case Height	23.25
Case Length	21.5
Case Lot Cube (ft.)	3.54
Case Lot Weight (lbs.)	19.92



Cutlery box in gray

The cutlery box by Vollrath features four rounded compartments for organizing and storing your cutlery or flatware. The durable polyethylene material provides years of reliable service, and built-in handles ensure easy transportation. You can also use this box for condiments or straw storage, making this an excellent, versatile option for your kitchen.

Four rounded compartments keep cutlery organized

Built-in handles ensure easy transportation

Polyethylene material is durable and long-lasting

Made in the USA

PRODUCT SPECIFICATIONS

Model Information

UPC	029419092543
-----	--------------

Unit Dimensions

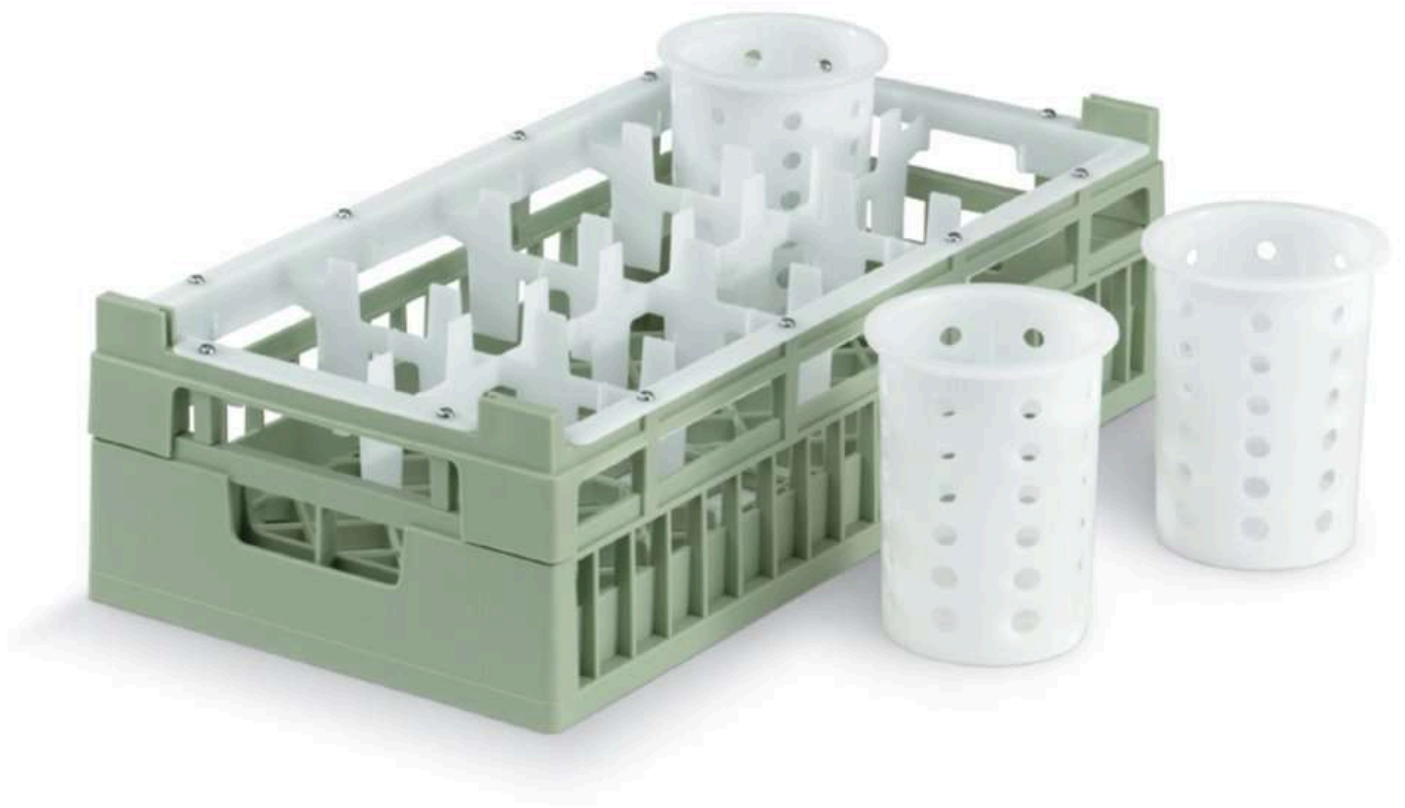
Overall Dimensions (IN)	21.625 x 11.875 x 3.75
(W) Width (IN)	21.62
(D) Depth (IN)	11.87
(H) Height (IN)	3.75
(W) Width (CM)	54.9
(D) Depth (CM)	30.2
(H) Height (CM)	9.5

Construction

Color	Gray
-------	------

Case Lot Measurement

Case Lot	12
Case Width	12.5
Case Height	23.5
Case Length	21.5
Case Lot Cube (ft.)	3.66
Case Lot Weight (lbs.)	20.04



DISCONTINUED

Vertical Flatware Washing System, Cylinders and Storage

PRODUCT SPECIFICATIONS

Unit Dimensions

Overall Dimensions (IN)	19.75 x 10 x 5.562
(W) Width (IN)	19.75
(D) Depth (IN)	10
(H) Height (IN)	5.56
(W) Width (CM)	50
(D) Depth (CM)	25.4
(H) Height (CM)	14.1

Case Lot Measurement

Case Lot	4
Case Lot Cube (ft.)	2.31
Case Lot Weight (lbs.)	12.5



Flatware Soak & Washing Systems

Allow your flatware to thoroughly soak before washing with the Vollrath® Signature soak system half rack and tub. The rack easily nests inside the tub, allowing the flatware inside to soak before washing. With a mesh bottom, this half rack keeps smaller items and flatware safely inside, while the open profile allows top-to-bottom and side-to-side washing as well as air circulation for superior quality cleaning and drying. The molded handles on each side ensure easy gripping and transportation, making this flatware rack an excellent choice for any kitchen.

Half rack easily nests inside tub for soaking prior to washing

Open profile allows top-to-bottom and side-to-side washing as well as air circulation for superior quality cleaning and drying

Durable plastic construction is built for years of use

Comfortable grip handles are molded into the rack, allowing it to be easily inserted and removed from the tub

Snap-fit extenders will not loosen and will not come apart

Mesh surface on rack bottom keeps small items and flatware secure

NSF-certified

Made in the USA

PRODUCT SPECIFICATIONS

Model Information

UPC	029419189502
-----	--------------

Unit Dimensions

Overall Dimensions (IN)	24.562 x 13.5 x 5.437
(W) Width (IN)	24.56
(D) Depth (IN)	13.5
(H) Height (IN)	5.43
(W) Width (CM)	62.3
(D) Depth (CM)	34.3
(H) Height (CM)	13.8
Size	Half

Construction

Color	Cocoa
-------	-------

Case Lot Measurement

Case Lot	1
Case Width	14
Case Height	5.75
Case Length	25.75
Case Lot Cube (ft.)	1.2
Case Lot Weight (lbs.)	5.48

PRODUCT **ACCESSORIES**

Name	Item #
Flatware Soak & Washing Systems	97300



Four-cylinder stainless steel silv-a-tainer

Store, organize and dry all your silverware with the four-cylinder silv-a-tainer by Vollrath. This unit has four slots designed to hold flatware cylinders, making this an ideal product for offering silverware to customers or simplifying storage in the kitchen. The smooth drop-in design allows you to remove and replace the cylinders as often as needed, and the solid stainless steel base maintains stability. An angled display ensures visibility, so anyone can see and take what they need, while the rounded edges give this silv-a-tainer a sleek appearance.

Four compartments allow you to keep your silverware organized

Stainless steel construction is durable and long-lasting

Ideal for storing, organizing and drying large amounts of silverware at once

Compatible with Vollrath® flatware cylinders, sold separately

Sturdy base prevents the unit from tipping over

Rolled edges ensure safety

PRODUCT SPECIFICATIONS

Model Information

UPC	029419052240
-----	--------------

Unit Dimensions

Overall Dimensions (IN)	10.125 x 11.5 x 8.5
-------------------------	---------------------

(W) Width (IN)	10.12
----------------	-------

(D) Depth (IN)	11.5
----------------	------

(H) Height (IN)	8.5
-----------------	-----

(W) Width (CM)	25.7
----------------	------

(D) Depth (CM)	29.2
----------------	------

(H) Height (CM)	21.6
-----------------	------

Case Lot Measurement

Case Lot	1
----------	---

Case Width	12.25
------------	-------

Case Height	19.25001
-------------	----------

Case Length	11
-------------	----

Case Lot Cube (ft.)	0.7
---------------------	-----



Six-cylinder stainless steel silv-a-tainer

Store, organize and dry all your silverware with the six-cylinder silv-a-tainer by Vollrath. This unit has six slots designed to hold flatware cylinders, making this an ideal product for offering silverware to customers or simplifying storage in the kitchen. The smooth drop-in design allows you to remove and replace the cylinders as often as needed, and the solid stainless steel base maintains stability. An angled display ensures visibility, so anyone can see and take what they need, while the rounded edges give this silv-a-tainer a sleek appearance.

Six compartments allow you to keep your silverware organized

Stainless steel construction is durable and long-lasting

Ideal for storing, organizing and drying large amounts of silverware at once

Compatible with Vollrath® flatware cylinders, sold separately

Sturdy base prevents the unit from tipping over

Rolled edges ensure safety

PRODUCT SPECIFICATIONS

Model Information

UPC	029419052257
-----	--------------

Unit Dimensions

Overall Dimensions (IN)	14.875 x 11.5 x 8.5
-------------------------	---------------------

(W) Width (IN)	14.87
----------------	-------

(D) Depth (IN)	11.5
----------------	------

(H) Height (IN)	8.5
-----------------	-----

(W) Width (CM)	37.8
----------------	------

(D) Depth (CM)	29.2
----------------	------

(H) Height (CM)	21.6
-----------------	------

Case Lot Measurement

Case Lot	1
----------	---

Case Width	12.25
------------	-------

Case Height	19.00001
-------------	----------

Case Length	15.5
-------------	------

Case Lot Cube (ft.)	1.21
---------------------	------



Silverware bin in gray

Designed to fit any standard-size cart, this silverware bin by Vollrath is the perfect addition to your bussing service. It allows you to keep silverware separate from dirty dishes when bussing, so your bussing cart stays organized, and you can maximize capacity to prevent extra trips and wasted time.

Fits all standard-size carts

Made in the USA

Keeps silverware separate from other
dirty items during bussing

PRODUCT **SPECIFICATIONS**

Model Information

UPC	029419087822
-----	--------------

Unit Dimensions

Overall Dimensions (IN)	15.5 x 6.375 x 6.5
(W) Width (IN)	15.5
(D) Depth (IN)	6.37
(H) Height (IN)	6.5
(W) Width (CM)	40
(D) Depth (CM)	16
(H) Height (CM)	17

Construction

Color	Black
-------	-------

Case Lot Measurement

Case Lot	6
Case Width	18.25
Case Height	9
Case Length	16
Case Lot Cube (ft.)	1.52
Case Lot Weight (lbs.)	10.38

PRODUCT **PARTS**

Name	Part #
RIVET OVAL HEAD SEMI-TUBULAR	21807-3
SILVER BIN - GREY	21757-1



Flatware Washing System

Flatware Washing System

PRODUCT SPECIFICATIONS

Model Information

UPC	029419204045
-----	--------------

Unit Dimensions

(W) Width (IN)	23.000012
----------------	-----------

(H) Height (IN)	21.500012
-----------------	-----------

Size	Half
------	------

Weight

Weight (LB)	32
-------------	----

Case Lot Measurement

Case Lot	1
----------	---

Case Width	23
------------	----

Case Height	21.5
-------------	------

Case Length	30.25
-------------	-------

Case Lot Cube (ft.)	8.66
---------------------	------

Case Lot Weight (lbs.)	32.0
------------------------	------



Silver Bins

Made in U.S.A.

Fits all standard size carts and trucks

Dimensions: 15.5 x 6.375 x 6.5 (40 x 16 x 17 cm)

PRODUCT SPECIFICATIONS

Model Information

UPC	029419087891
-----	--------------

Unit Dimensions

Overall Dimensions (IN)	15.5 x 6.375 x 6.5
(W) Width (IN)	15.5
(D) Depth (IN)	6.37
(H) Height (IN)	6.5
(W) Width (CM)	40
(D) Depth (CM)	16
(H) Height (CM)	17

Construction

Color	Beige
-------	-------

Case Lot Measurement

Case Lot	6
Case Width	18.25
Case Height	9
Case Length	16
Case Lot Cube (ft.)	1.52
Case Lot Weight (lbs.)	10.08

PRODUCT PARTS

Name	Part #
RIVET OVAL HEAD SEMI-TUBULAR	21807-3
SILVER BIN - BLACK	21758-1



Flatware Soak & Washing Systems

Mesh surface on rack bottom keeps flatware and smaller items in the rack

PRODUCT SPECIFICATIONS

Model Information

UPC

029419202355

Unit Dimensions

Overall Dimensions (IN)	12 x 11 x 9
(W) Width (IN)	12
(D) Depth (IN)	11
(H) Height (IN)	9
(L) Length (IN)	12
(W) Width (CM)	30.5
(D) Depth (CM)	28
(H) Height (CM)	23

Construction

Color	Cocoa
-------	-------

Case Lot Measurement

Case Lot	1
Case Width	12.5
Case Height	11.25
Case Length	12.5
Case Lot Cube (ft.)	1.02
Case Lot Weight (lbs.)	7.6

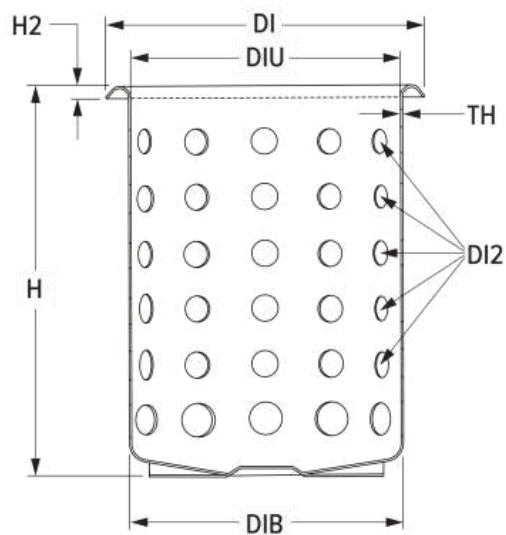


Vertical Flatware Washing System, Cylinders and Storage

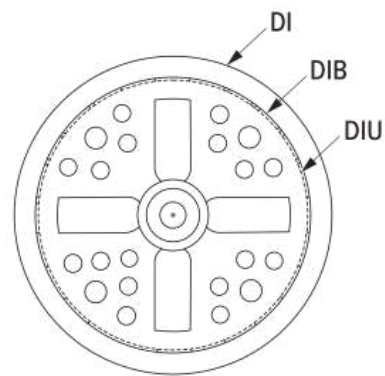
Vertical Flatware Washing System, Cylinders and Storage



PRODUCT SPECIFICATIONS



FRONT VIEW



BOTTOM VIEW

Model Information

UPC

029419040490

Unit Dimensions

(W) Width (IN)	4.500002
(H) Height (IN)	5.56
(H2) Secondary Height (IN)	0.15625
(DI) Diameter	4.5
(DiU) Usable Diameter (IN)	3.817
(DIB) Base Diameter (IN)	3.875
(DI2) Diameter (IN)	0.375
(T) Thickness (IN)	0.029
(H) Height (CM)	14.1
(H2) Secondary Height (CM)	0.4
(DI) Diameter (CM)	11.4
(DiU) Usable Diameter (CM)	9.7
(DIB) Base Diameter (CM)	9.8
(DI2) Diameter (CM)	1
(T) Thickness (CM)	0.1

Weight

Weight (LB)	0.5786
-------------	--------

Case Lot Measurement

Case Lot	12
Case Width	12.75
Case Height	17.250009
Case Length	16.5
Case Lot Cube (ft.)	0.76



Vertical Flatware Washing System, Cylinders and Storage

Vertical Flatware Washing System, Cylinders and Storage

PRODUCT **SPECIFICATIONS**

Model Information

UPC

029419040506

Unit Dimensions

Overall Dimensions (IN) 15 x 10 x 11.125

(W) Width (IN) 15

(D) Depth (IN) 10

(H) Height (IN) 11.12

(W) Width (CM) 38.1

(D) Depth (CM) 25.4

(H) Height (CM) 28.3

Case Lot Measurement

Case Lot 1

Case Width 11

Case Height 5

Case Length 15.75

Case Lot Cube (ft.) 0.5

Case Lot Weight (lbs.) 3.84



Half-size Signature flatware rack in light green

Make sure all your flatware is cleaner than ever with the Signature flatware rack by Vollrath. This rack features a tight lattice-bottom grid which prevents flatware and other small items, like ramekins, utensils and more, from falling through. The open profile allows thorough washing, complete rinsing, rapid drying and quick cooling for a beautiful, sparkling clean result. With double-wall copolymer plastic construction, this rack offers chemical, impact and heat resistance up to 180°F for 30 minutes. The peg corner design ensures secure stacking, and the light green color fits into your color-coded warewashing system.

- Open profile promotes thorough washing, complete rinsing, rapid drying and quick cooling for a beautiful, clean result

Copolymer plastic construction is chemical-, impact- and heat-resistant up to 180°F for 30 minutes

Tight lattice-bottom grid prevents items from falling through

Open design fits flatware as well as ramekins, utensils and other small items

Peg corner design ensures secure stacking

Made in the USA

NSF-certified

BPA-free

PRODUCT **SPECIFICATIONS**

Model Information

UPC	029419127566
-----	--------------

Unit Dimensions

Overall Dimensions (IN)	19.25 x 10 x 4.125
(W) Width (IN)	19.25
(D) Depth (IN)	10
(H) Height (IN)	4.12
Inside Compartment Width (IN)	18.062
Inside Compartment Depth (IN)	9
Inside Compartment Height (IN)	2.625
(W) Width (CM)	25.4
(D) Depth (CM)	50.2
(H) Height (CM)	10.5
Inside Compartment Width (CM)	46
Inside Compartment Depth (CM)	22.9

Inside Compartment Height (CM)

6.7

Size

Half

Construction

Color

Light Green

Case Lot Measurement

Case Width

10

Case Height

21

Case Length

20



DISCONTINUED

Signature half-size flatware rack in Cocoa

Mesh surface on rack bottom keeps flatware and smaller items in the rack

Tight lattice bottom prevents flatware from falling through

Rack transfers directly to dishwasher

Rack systems can be used with each other

BPA free

Made to Order item. These items require additional time for fulfillment. Made to Order items cannot be changed, cancelled, or returned and may be subject to a minimum order quantity. Contact your Vollrath sales representative for details.

PRODUCT **SPECIFICATIONS**

Model Information

UPC	029419128389
-----	--------------

Unit Dimensions

Overall Dimensions (IN)	19.25 x 10 x 4.125
(W) Width (IN)	19.25
(D) Depth (IN)	10
(H) Height (IN)	4.12
Inside Compartment Width (IN)	18.062
Inside Compartment Depth (IN)	9
Inside Compartment Height (IN)	2.625
(W) Width (CM)	25.4
(D) Depth (CM)	50.2
(H) Height (CM)	10.5
Inside Compartment Width (CM)	46
Inside Compartment Depth (CM)	22.9
Inside Compartment Height (CM)	6.7
Size	Half

Construction

Color	Cocoa
-------	-------

Case Lot Measurement

Case Width	10
------------	----

Case Height	21
-------------	----

Case Length	20
-------------	----

DISCONTINUED

Signature half-size flatware rack in Grey

Mesh surface on rack bottom keeps flatware and smaller items in the rack

Tight lattice bottom prevents flatware from falling through

Rack transfers directly to dishwasher

Rack systems can be used with each other

BPA free

Made to Order item. These items require additional time for fulfillment. Made to Order items cannot be changed, cancelled, or returned and may be subject to a minimum order quantity. Contact your Vollrath sales representative for details.

PRODUCT SPECIFICATIONS

Model Information

UPC	671080367934
-----	--------------

Unit Dimensions

Overall Dimensions (IN)	19.25 x 10 x 4.125
(W) Width (IN)	19.25
(D) Depth (IN)	10
(H) Height (IN)	4.12
Inside Compartment Width (IN)	18.062
Inside Compartment Depth (IN)	9

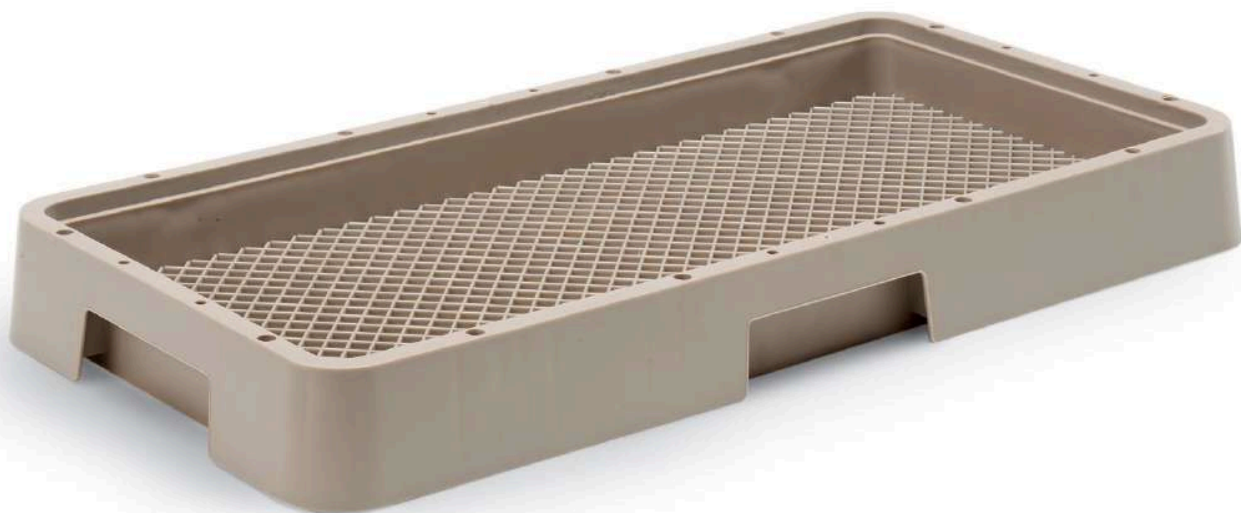
Inside Compartment Height (IN)	2.625
(W) Width (CM)	25.4
(D) Depth (CM)	50.2
(H) Height (CM)	10.5
Inside Compartment Width (CM)	46
Inside Compartment Depth (CM)	22.9
Inside Compartment Height (CM)	6.7
Size	Half

Construction

Color	Grey
-------	------

Case Lot Measurement

Case Width	10
Case Height	21
Case Length	20



Flatware Soak & Washing Systems

Mesh surface on rack bottom keeps flatware and smaller items in the rack

PRODUCT SPECIFICATIONS

Model Information

UPC

029419863129

Unit Dimensions

Overall Dimensions (IN)	10 x 19.25 x 2.062
(W) Width (IN)	10
(D) Depth (IN)	19.25
(H) Height (IN)	2.06
Max Height (IN)	1.25
(W) Width (CM)	25.4
(D) Depth (CM)	50.2
(H) Height (CM)	5.2
Max Height (CM)	3.2

Case Lot Measurement

Case Lot	12
Case Width	15.75
Case Height	20.5
Case Length	20
Case Lot Cube (ft.)	2.92
Case Lot Weight (lbs.)	16.5



Half-size Traex® flatware rack with one extender in beige

The strength of the Traex flatware rack by Vollrath is unmatched. Made of copolymer plastic to ensure chemical, impact and heat resistance up to 180°F for 30 minutes, this rack is impressively durable. This rack features a tight lattice-bottom grid which prevents flatware and other small items, like ramekins, utensils and more, from falling through. The open profile allows top-to-bottom and side-to-side washing, as well as air circulation for superior cleaning and drying. Handles on all four sides of the rack ensure easy gripping and transportation, while reinforced index strips allow for four-way tracking.

Open profile allows thorough washing and air circulation for superior cleaning and drying

Copolymer plastic construction is chemical-, impact- and heat-resistant up to 180°F for 30 minutes

Tight lattice-bottom grid prevents items from falling through

Extender creates ample room for flatware, ramekins, utensils and more

Handles ensure easy gripping and transportation

Reinforced index strips for four-way tracking

Made in the USA

NSF-certified



PRODUCT SPECIFICATIONS

Model Information

UPC

029419863136

Unit Dimensions

Overall Dimensions (IN)	19.75 x 10 x 3.812
(W) Width (IN)	19.75
(D) Depth (IN)	10
(H) Height (IN)	3.81
(W) Width (CM)	50
(D) Depth (CM)	25.4
(H) Height (CM)	9.7
Size	Half

Construction

Color	Beige
-------	-------

Case Lot Measurement

Case Lot	6
Case Width	10.5
Case Height	22.25
Case Length	20
Case Lot Cube (ft.)	2.67
Case Lot Weight (lbs.)	14.45



Vertical Flatware Washing System, Cylinders and Storage

PRODUCT SPECIFICATIONS

Model Information

UPC

029419863204

Unit Dimensions

Overall Dimensions (IN)

19.75 x 10 x 9.062

(W) Width (IN)

19.75

(D) Depth (IN)

10

(H) Height (IN)

9.06

(W) Width (CM)

50

(D) Depth (CM)

25.4

(H) Height (CM)

23

Size

Half

Construction

Color

Beige

Case Lot Measurement

Case Lot

2

Case Width

10.5

Case Height

22.25

Case Length

20

Case Lot Cube (ft.)

2.67

Case Lot Weight (lbs.)

13.55



Vertical Flatware Washing System, Cylinders and Storage

Organize, clean and dry all your silverware with the Vollrath® Traex half rack with eight cylinder containers. The simple design saves space and allows you to keep your flatware organized while washing and drying, saving valuable time. These heavy-duty, long lasting cylinders keep flatware vertical to improve overall results and speed the drying process, while the open profile allows top-to-bottom and side-to-side washing as well as better air circulation. Handles on all four sides of the rack ensure easy gripping and transportation, while reinforced index strips allow for four-way tracking.

Half rack with eight cylinders allows you to keep your silverware organized during the cleaning and drying process, saving valuable time

Open profile allows top-to-bottom and side-to-side washing as well as air circulation for superior quality cleaning and drying

Heavy-duty construction is built for years of use

Ideal for organizing, cleaning and drying large amounts of silverware at once

NSF-certified

Made in the USA

PRODUCT SPECIFICATIONS

Model Information

UPC	029419863105
-----	--------------

Unit Dimensions

Overall Dimensions (IN)	19.75 x 10 x 9.062
(W) Width (IN)	19.75
(D) Depth (IN)	10
(H) Height (IN)	9.06
(W) Width (CM)	50
(D) Depth (CM)	25.4
(H) Height (CM)	23
Size	Half

Construction

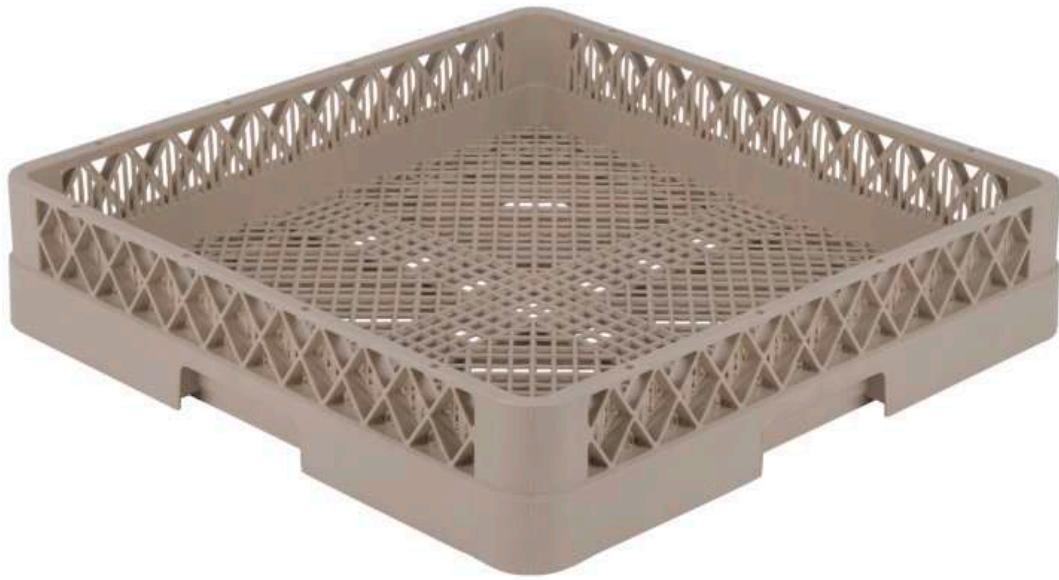
Product Function	Warewashing racks
------------------	-------------------

Case Lot Measurement

Case Lot	3
Case Width	10.5
Case Height	22.25
Case Length	20
Case Lot Cube (ft.)	2.67
Case Lot Weight (lbs.)	16.1

PRODUCT **ACCESSORIES**

Name	Item #
Traex® plastic vertical flatware cylinder in beige	1370



Flatware Soak & Washing Systems Rack

The Vollrath® flatware rack features a mesh bottom that is ideal for small items and flatware. These racks feature an open profile that allows top-to-bottom and side-to-side washing as well as air circulation for superior quality cleaning and drying, while ribbed sides prevent knives from protruding and potentially causing injury. The molded handles on each side ensure easy gripping and transportation, making this flatware rack an excellent choice for any kitchen.

Inside rack height of 3 ¼ inches easily fits small items and flatware

Open profile allows top-to-bottom and side-to-side washing as well as air circulation for superior quality cleaning and drying

Durable plastic construction is built for years of use

Comfortable grip handles are molded into all four sides

Mesh surface on rack bottom keeps small items and flatware secure

NSF-certified

Made in the USA



PRODUCT SPECIFICATIONS

Model Information

Model

Flatware rack

UPC

029419872169

Unit Dimensions

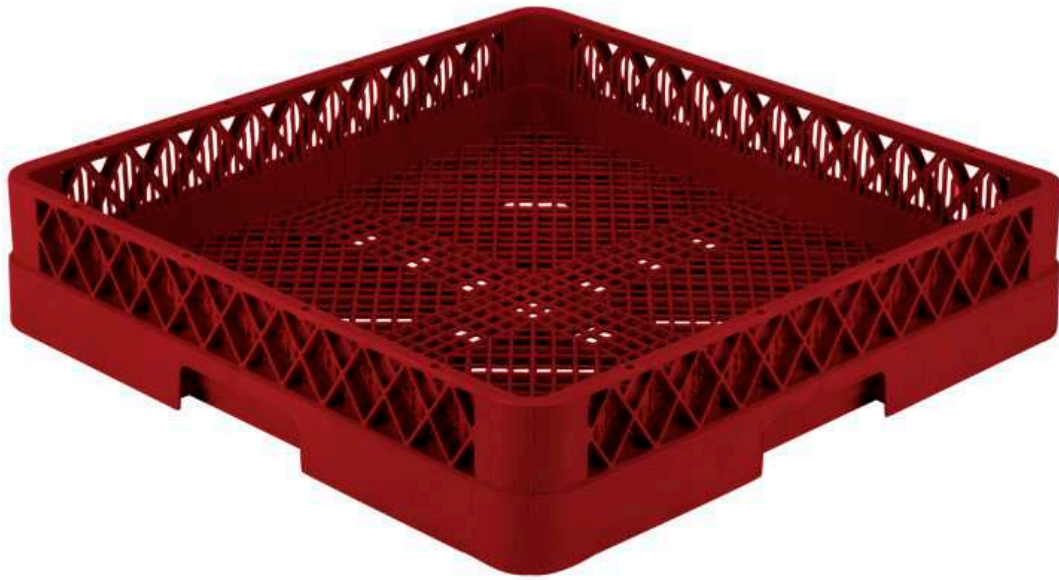
Overall Dimensions (IN)	19.75 x 19.75 x 3.812
(W) Width (IN)	19.75
(D) Depth (IN)	19.75
(H) Height (IN)	3.81
(W) Width (CM)	50
(D) Depth (CM)	50
(H) Height (CM)	9.7
Size	Full

Construction

Color	Beige
-------	-------

Case Lot Measurement

Case Lot	6
Case Width	20.25
Case Height	24
Case Length	20
Case Lot Cube (ft.)	5.67
Case Lot Weight (lbs.)	22.9



Full-size Traex[®] flatware rack in red

The strength of the Traex flatware rack by Vollrath is unmatched. Made of copolymer plastic to ensure chemical, impact and heat resistance up to 180°F for 30 minutes, this rack is impressively durable. This rack features a tight lattice-bottom grid, which prevents flatware and other small items, like ramekins, utensils and more, from falling through. The open profile allows top-to-bottom and side-to-side washing, as well as air circulation for superior cleaning and drying. Handles on all four sides of the rack ensure easy gripping and transportation, while reinforced index strips allow for four-way tracking. The red color allows this rack to fit into your color-coded system perfectly.

- Open profile allows thorough washing and air circulation for superior cleaning and drying

Copolymer plastic construction is chemical-, impact- and heat-resistant up to 180°F for 30 minutes

Tight lattice-bottom grid prevents items from falling through
- Extender creates ample room for flatware, ramekins, utensils and more

Handles ensure easy gripping and transportation

Reinforced index strips for four-way tracking

Made in the USA

NSF-certified

PRODUCT SPECIFICATIONS

Model Information

Model	Flatware rack
UPC	029419872176

Unit Dimensions

Overall Dimensions (IN)	19.75 x 19.75 x 3.812
(W) Width (IN)	19.75
(D) Depth (IN)	19.75
(H) Height (IN)	3.81
(W) Width (CM)	50
(D) Depth (CM)	50
(H) Height (CM)	9.7
Size	Full

Construction

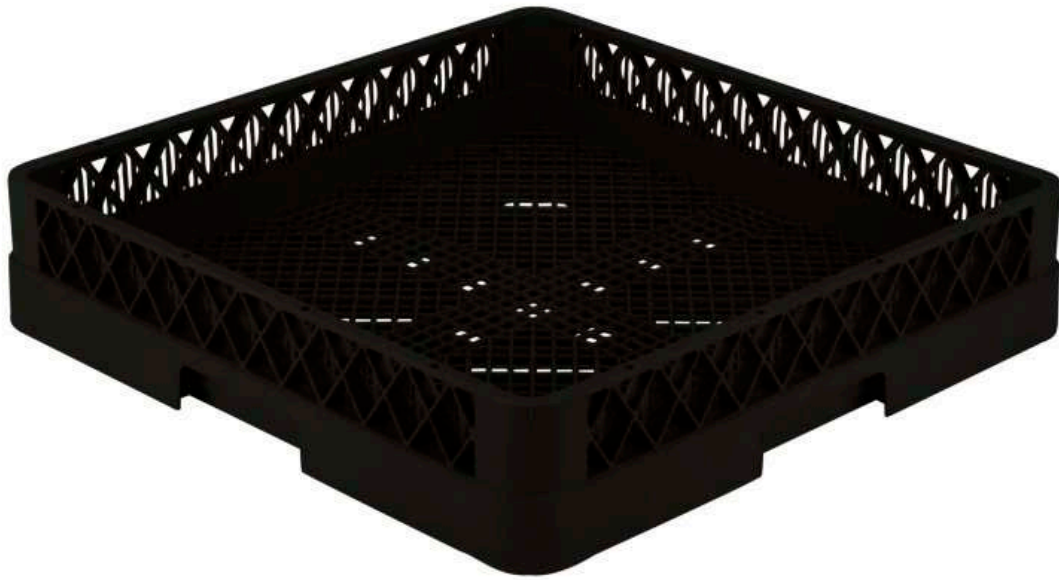
Color	Red
-------	-----

Case Lot Measurement

Case Width	20.25
------------	-------

Case Height	24
-------------	----

Case Length	20
-------------	----



Full-size Traex® flatware rack in black

The strength of the Traex flatware rack by Vollrath is unmatched. Made of copolymer plastic to ensure chemical, impact and heat resistance up to 180°F for 30 minutes, this rack is impressively durable. This rack features a tight lattice-bottom grid, which prevents flatware and other small items, like ramekins, utensils and more, from falling through. The open profile allows top-to-bottom and side-to-side washing, as well as air circulation for superior cleaning and drying. Handles on all four sides of the rack ensure easy gripping and transportation, while reinforced index strips allow for four-way tracking. The black color allows this rack to fit into your color-coded system perfectly.

- Open profile allows thorough washing and air circulation for superior cleaning and drying

Copolymer plastic construction is chemical-, impact- and heat-resistant up to 180°F for 30 minutes

Tight lattice-bottom grid prevents items from falling through
- Extender creates ample room for flatware, ramekins, utensils and more

Handles ensure easy gripping and transportation

Reinforced index strips for four-way tracking

Made in the USA

NSF-certified

PRODUCT **SPECIFICATIONS**

Model Information

Model	Flatware rack
UPC	029419872190

Unit Dimensions

Overall Dimensions (IN)	19.75 x 19.75 x 3.812
(W) Width (IN)	19.75
(D) Depth (IN)	19.75
(H) Height (IN)	3.81
(W) Width (CM)	50
(D) Depth (CM)	50
(H) Height (CM)	9.7
Size	Full

Construction

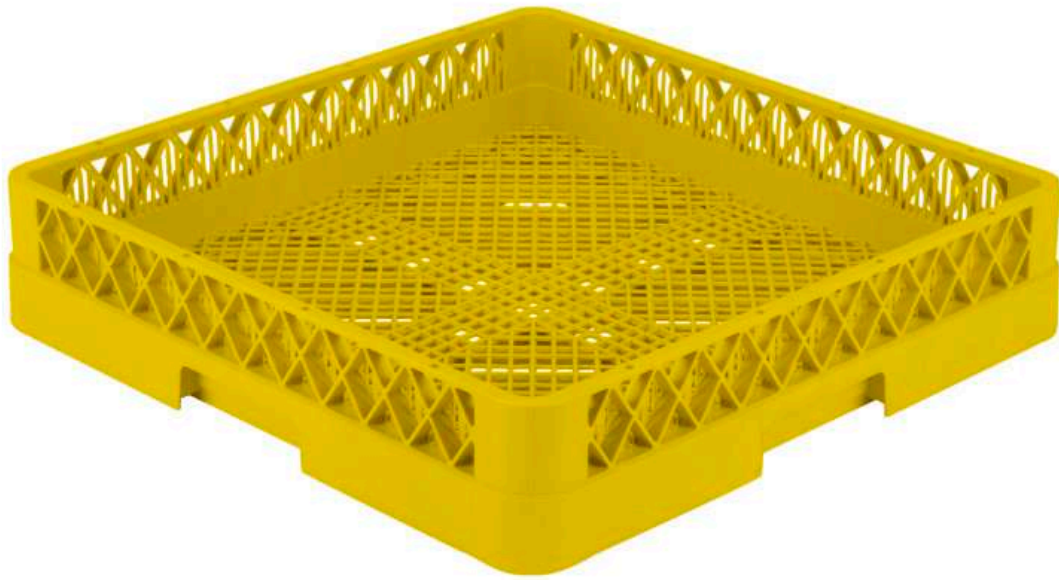
Color	Black
-------	-------

Case Lot Measurement

Case Width	20.25
------------	-------

Case Height	24
-------------	----

Case Length	20
-------------	----



Flatware Soak & Washing Systems Rack in Yellow

Mesh surface on rack bottom keeps flatware and smaller items in the rack

Made with a co-polymer material

Mesh surface prevents flatware from falling through

Interior ribs prevent knives from protruding through the sides

Four handle grips for easy lifting and transporting

PRODUCT **SPECIFICATIONS**

Model Information

Model	Flatware rack
UPC	029419872213

Unit Dimensions

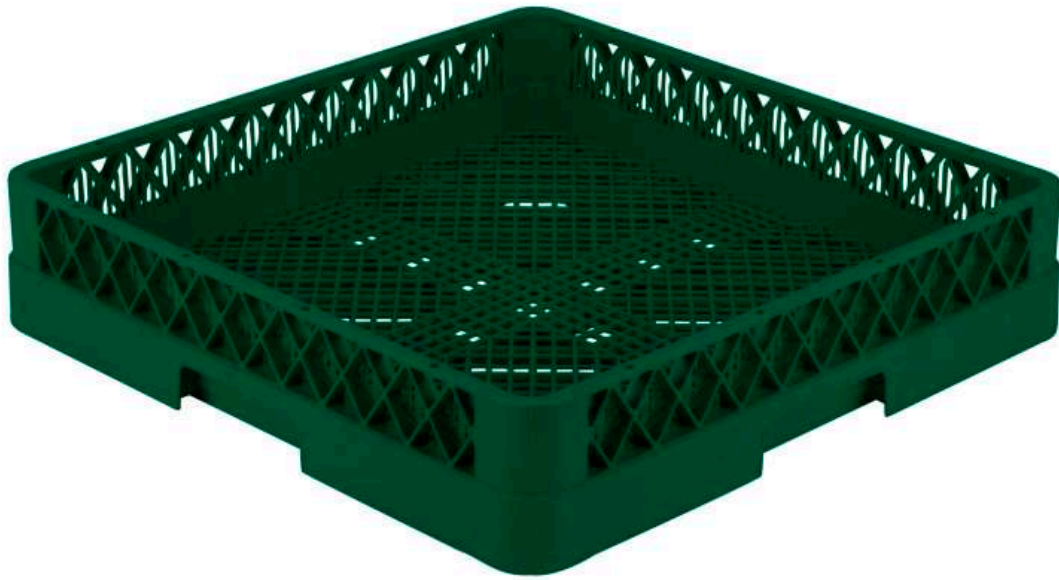
Overall Dimensions (IN)	19.75 x 19.75 x 3.812
(W) Width (IN)	19.75
(D) Depth (IN)	19.75
(H) Height (IN)	3.81
(W) Width (CM)	50
(D) Depth (CM)	50
(H) Height (CM)	9.7
Size	Full

Construction

Color	Yellow
-------	--------

Case Lot Measurement

Case Width	20.25
Case Height	24
Case Length	20



Full-size Traex[®] flatware rack in green

The strength of the Traex flatware rack by Vollrath is unmatched. Made of copolymer plastic to ensure chemical, impact and heat resistance up to 180°F for 30 minutes, this rack is impressively durable. This rack features a tight lattice-bottom grid, which prevents flatware and other small items, like ramekins, utensils and more, from falling through. The open profile allows top-to-bottom and side-to-side washing, as well as air circulation for superior cleaning and drying. Handles on all four sides of the rack ensure easy gripping and transportation, while reinforced index strips allow for four-way tracking. The green color allows this rack to fit into your color-coded system perfectly.

- Open profile allows thorough washing and air circulation for superior cleaning and drying

Copolymer plastic construction is chemical-, impact- and heat-resistant up to 180°F for 30 minutes

Tight lattice-bottom grid prevents items from falling through
- Extender creates ample room for flatware, ramekins, utensils and more

Handles ensure easy gripping and transportation

Reinforced index strips for four-way tracking

Made in the USA

NSF-certified

PRODUCT **SPECIFICATIONS**

Model Information

Model	Flatware rack
UPC	029419872237

Unit Dimensions

Overall Dimensions (IN)	19.75 x 19.75 x 3.812
(W) Width (IN)	19.75
(D) Depth (IN)	19.75
(H) Height (IN)	3.81
(W) Width (CM)	50
(D) Depth (CM)	50
(H) Height (CM)	9.7
Size	Full

Construction

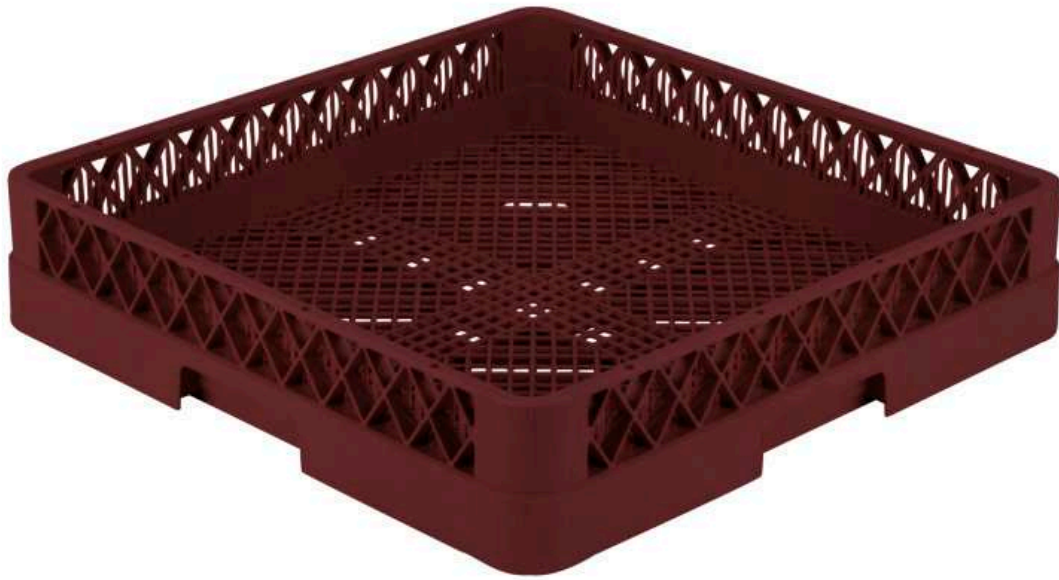
Color	Green
-------	-------

Case Lot Measurement

Case Width	20.25
------------	-------

Case Height	24
-------------	----

Case Length	20
-------------	----



Full-size Traex® flatware rack in burgundy

The strength of the Traex flatware rack by Vollrath is unmatched. Made of copolymer plastic to ensure chemical, impact and heat resistance up to 180°F for 30 minutes, this rack is impressively durable. This rack features a tight lattice-bottom grid, which prevents flatware and other small items, like ramekins, utensils and more, from falling through. The open profile allows top-to-bottom and side-to-side washing, as well as air circulation for superior cleaning and drying. Handles on all four sides of the rack ensure easy gripping and transportation, while reinforced index strips allow for four-way tracking. The burgundy color allows this rack to fit into your color-coded system perfectly.

- Open profile allows thorough washing and air circulation for superior cleaning and drying

Copolymer plastic construction is chemical-, impact- and heat-resistant up to 180°F for 30 minutes

Tight lattice-bottom grid prevents items from falling through
- Extender creates ample room for flatware, ramekins, utensils and more

Handles ensure easy gripping and transportation

Reinforced index strips for four-way tracking

Made in the USA

NSF-certified

PRODUCT **SPECIFICATIONS**

Model Information

Model	Flatware rack
UPC	029419872251

Unit Dimensions

Overall Dimensions (IN)	19.75 x 19.75 x 3.812
(W) Width (IN)	19.75
(D) Depth (IN)	19.75
(H) Height (IN)	3.81
(W) Width (CM)	50
(D) Depth (CM)	50
(H) Height (CM)	9.7
Size	Full

Construction

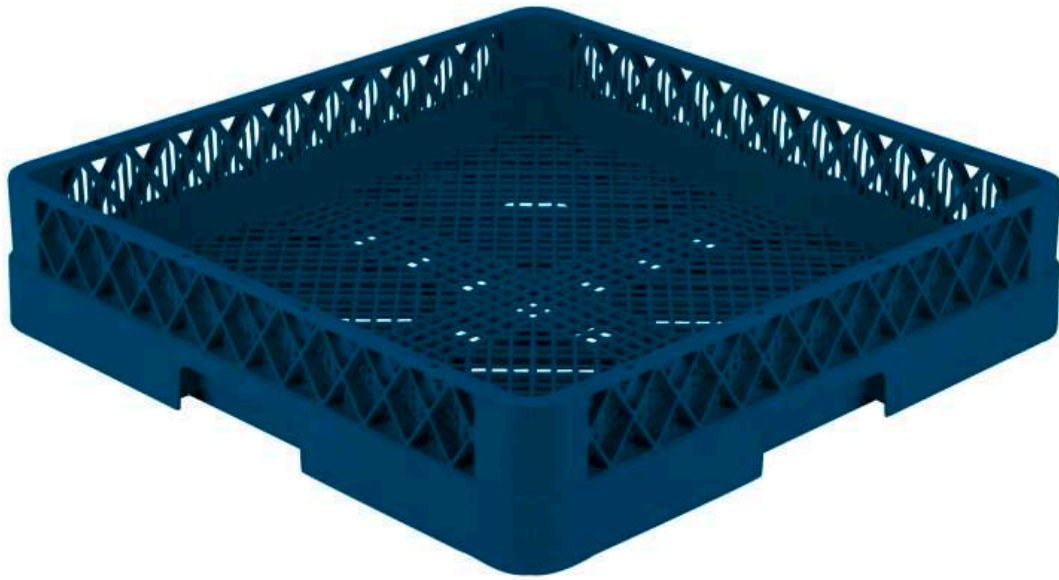
Color	Burgundy
-------	----------

Case Lot Measurement

Case Width	20.25
------------	-------

Case Height	24
-------------	----

Case Length	20
-------------	----



Full-size Traex[®] flatware rack in royal blue

The strength of the Traex flatware rack by Vollrath is unmatched. Made of copolymer plastic to ensure chemical, impact and heat resistance up to 180°F for 30 minutes, this rack is impressively durable. This rack features a tight lattice-bottom grid, which prevents flatware and other small items, like ramekins, utensils and more, from falling through. The open profile allows top-to-bottom and side-to-side washing, as well as air circulation for superior cleaning and drying. Handles on all four sides of the rack ensure easy gripping and transportation, while reinforced index strips allow for four-way tracking. The royal blue color allows this rack to fit into your color-coded system perfectly.

- Open profile allows thorough washing and air circulation for superior cleaning and drying

Copolymer plastic construction is chemical-, impact- and heat-resistant up to 180°F for 30 minutes

Tight lattice-bottom grid prevents items from falling through
- Extender creates ample room for flatware, ramekins, utensils and more

Handles ensure easy gripping and transportation

Reinforced index strips for four-way tracking

Made in the USA

NSF-certified

PRODUCT **SPECIFICATIONS**

Model Information

Model	Flatware rack
UPC	029419872282

Unit Dimensions

Overall Dimensions (IN)	19.75 x 19.75 x 3.812
(W) Width (IN)	19.75
(D) Depth (IN)	19.75
(H) Height (IN)	3.81
(W) Width (CM)	50
(D) Depth (CM)	50
(H) Height (CM)	9.7
Size	Full

Construction

Color	Royal Blue
-------	------------

Case Lot Measurement

Case Width	20.25
------------	-------

Case Height	24
-------------	----

Case Length	20
-------------	----



По вопросам продаж и поддержки обращайтесь:

Алматы (727)345-47-04
Ангарск (3955)60-70-56
Архангельск (8182)63-90-72
Астрахань (8512)99-46-04
Барнаул (3852)73-04-60
Белгород (4722)40-23-64
Благовещенск (4162)22-76-07
Брянск (4832)59-03-52
Владивосток (423)249-28-31
Владикавказ (8672)28-90-48
Владимир (4922)49-43-18
Волгоград (844)278-03-48
Вологда (8172)26-41-59
Воронеж (473)204-51-73
Екатеринбург (343)384-55-89

Иваново (4932)77-34-06
Ижевск (3412)26-03-58
Иркутск (395)279-98-46
Казань (843)206-01-48
Калининград (4012)72-03-81
Калуга (4842)92-23-67
Кемерово (3842)65-04-62
Киров (8332)68-02-04
Коломна (4966)23-41-49
Кострома (4942)77-07-48
Краснодар (861)203-40-90
Красноярск (391)204-63-61
Курск (4712)77-13-04
Курган (3522)50-90-47
Липецк (4742)52-20-81

Магнитогорск (3519)55-03-13
Москва (495)268-04-70
Мурманск (8152)59-64-93
Набережные Челны (8552)20-53-41
Нижний Новгород (831)429-08-12
Новокузнецк (3843)20-46-81
Ноябрьск (3496)41-32-12
Новосибирск (383)227-86-73
Омск (3812)21-46-40
Орел (4862)44-53-42
Оренбург (3532)37-68-04
Пенза (8412)22-31-16
Петрозаводск (8142)55-98-37
Псков (8112)59-10-37
Пермь (342)205-81-47

Ростов-на-Дону (863)308-18-15
Рязань (4912)46-61-64
Самара (846)206-03-16
Санкт-Петербург (812)309-46-40
Саратов (845)249-38-78
Севастополь (8692)22-31-93
Саранск (8342)22-96-24
Симферополь (3652)67-13-56
Смоленск (4812)29-41-54
Сочи (862)225-72-31
Ставрополь (8652)20-65-13
Сургут (3462)77-98-35
Сыктывкар (8212)25-95-17
Тамбов (4752)50-40-97
Тверь (4822)63-31-35

Тольятти (8482)63-91-07
Томск (3822)98-41-53
Тула (4872)33-79-87
Тюмень (3452)66-21-18
Ульяновск (8422)24-23-59
Улан-Удэ (3012)59-97-51
Уфа (347)229-48-12
Хабаровск (4212)92-98-04
Чебоксары (8352)28-53-07
Челябинск (351)202-03-61
Череповец (8202)49-02-64
Чита (3022)38-34-83
Якутск (4112)23-90-97
Ярославль (4852)69-52-93

Россия +7(495)268-04-70

Казахстан +7(727)345-47-04

Беларусь +(375)257-127-884

Узбекистан +998(71)205-18-59

Киргизия +996(312)96-26-47

эл.почта: vha@nt-rt.ru || сайт: <https://vollrath.nt-rt.ru/>