

# Пластиковые кастрюли для парового стола

## Технические характеристики

По вопросам продаж и поддержки обращайтесь:

Алматы (727)345-47-04  
Ангарск (3955)60-70-56  
Архангельск (8182)63-90-72  
Астрахань (8512)99-46-04  
Барнаул (3852)73-04-60  
Белгород (4722)40-23-64  
Благовещенск (4162)22-76-07  
Брянск (4832)59-03-52  
Владивосток (423)249-28-31  
Владикавказ (8672)28-90-48  
Владимир (4922)49-43-18  
Волгоград (844)278-03-48  
Вологда (8172)26-41-59  
Воронеж (473)204-51-73  
Екатеринбург (343)384-55-89

Иваново (4932)77-34-06  
Ижевск (3412)26-03-58  
Иркутск (395)279-98-46  
Казань (843)206-01-48  
Калининград (4012)72-03-81  
Калуга (4842)92-23-67  
Кемерово (3842)65-04-62  
Киров (8332)68-02-04  
Коломна (4966)23-41-49  
Кострома (4942)77-07-48  
Краснодар (861)203-40-90  
Красноярск (391)204-63-61  
Курск (4712)77-13-04  
Курган (3522)50-90-47  
Липецк (4742)52-20-81

Магнитогорск (3519)55-03-13  
Москва (495)268-04-70  
Мурманск (8152)59-64-93  
Набережные Челны (8552)20-53-41  
Нижний Новгород (831)429-08-12  
Новокузнецк (3843)20-46-81  
Ноябрьск (3496)41-32-12  
Новосибирск (383)227-86-73  
Омск (3812)21-46-40  
Орел (4862)44-53-42  
Оренбург (3532)37-68-04  
Пенза (8412)22-31-16  
Петрозаводск (8142)55-98-37  
Псков (8112)59-10-37  
Пермь (342)205-81-47

Ростов-на-Дону (863)308-18-15  
Рязань (4912)46-61-64  
Самара (846)206-03-16  
Санкт-Петербург (812)309-46-40  
Саратов (845)249-38-78  
Севастополь (8692)22-31-93  
Саранск (8342)22-96-24  
Симферополь (3652)67-13-56  
Смоленск (4812)29-41-54  
Сочи (862)225-72-31  
Ставрополь (8652)20-65-13  
Сургут (3462)77-98-35  
Сыктывкар (8212)25-95-17  
Тамбов (4752)50-40-97  
Тверь (4822)63-31-35

Тольятти (8482)63-91-07  
Томск (3822)98-41-53  
Тула (4872)33-79-87  
Тюмень (3452)66-21-18  
Ульяновск (8422)24-23-59  
Улан-Удэ (3012)59-97-51  
Уфа (347)229-48-12  
Хабаровск (4212)92-98-04  
Чебоксары (8352)28-53-07  
Челябинск (351)202-03-61  
Череповец (8202)49-02-64  
Чита (3022)38-34-83  
Якутск (4112)23-90-97  
Ярославль (4852)69-52-93

Россия +7(495)268-04-70

Казахстан +7(727)345-47-04

Беларусь +(375)257-127-884

Узбекистан +998(71)205-18-59

Киргизия +996(312)96-26-47

эл.почта: [vha@nt-rt.ru](mailto:vha@nt-rt.ru) || сайт: <https://vollrath.nt-rt.ru/>



## Half-size 6-inch-deep Super Pan<sup>®</sup> low-temperature plastic pan in black

Perfect for storage and cold applications, the Super Pan plastic pan by Vollrath keeps your items organized and visible. The durable plastic is approved for temperatures between -40°F and 210°F, and the black color creates a sleek appearance. Reinforced corners add strength, while antijam stacking lugs allow easy separation and lifting of the pan. The integral frame enhances food presentation, making this an excellent addition to a wide range of commercial operations.

Polycarbonate construction is strong and reliable

Low-temperature plastic is approved for temperatures between -40°F and 210°F

Reinforced corners add strength

Integral frame enhances food presentation

Black color creates a sleek appearance

Antijam stacking lugs allow easy separation and lifting of the pan

Ideal for storage and cold applications — not for use in steam environments

NSF-certified

PRODUCT **SPECIFICATIONS**

**Model Information**

UPC	029419332250
-----	--------------

**Unit Dimensions**

Overall Dimensions (IN)	12.812 x 10.375 x 6
(W) Width (IN)	12.81
(D) Depth (IN)	10.37
(H) Height (IN)	6
(W) Width (CM)	32.5
(D) Depth (CM)	26.4
(H) Height (CM)	15.2
Size	Half

**Volume**

Capacity, Brimful (QT)	8.6
Capacity, Brimful (L)	8.1

**Construction**

Color	Black
Construction Material	Plastic

**Case Lot Measurement**

Case Lot	6
Case Width	13
Case Height	13.625
Case Length	10.75
Case Lot Cube (ft.)	1.1
Case Lot Weight (lbs.)	7.48

PRODUCT **ACCESSORIES**

Name	Item #
Half-size Super Pan® solid clear polycarbonate cover	31200
Half-size Super Pan® slotted clear polycarbonate cover	32200



## Half-size 4-inch-deep Super Pan® high-temperature plastic pan in amber

Perfect for storage and cold applications, the Super Pan plastic pan by Vollrath keeps your items organized and visible. The durable plastic is approved for temperatures between -40°F and 375°F, making it ideal for hot foods. Reinforced corners add strength, while antijam stacking lugs allow easy separation and lifting of the pan. The integral frame enhances food presentation, making this an excellent addition to a wide range of commercial operations.

Plastic construction is strong, reliable and provides excellent visibility

High-temperature plastic is approved for temperatures between -40°F and 375°F

Reinforced corners add strength

Integral frame enhances food presentation

Anijam stacking lugs allow easy separation and lifting of the pan

Designed for steam tables and microwaves — not for use in ovens, combi-steamers or convection ovens

Made in the USA

NSF-certified



## PRODUCT SPECIFICATIONS

### Model Information

UPC

029419332717

**Unit Dimensions**

Overall Dimensions (IN)	12.812 x 10.375 x 4
(W) Width (IN)	12.81
(D) Depth (IN)	10.37
(H) Height (IN)	4
(W) Width (CM)	32.5
(D) Depth (CM)	26.4
(H) Height (CM)	10.2
Size	Half

**Volume**

Capacity, Brimful (QT)	5.9
Capacity, Brimful (L)	5.6

**Construction**

Color	Amber
Construction Material	Plastic

**Case Lot Measurement**

Case Lot	6
Case Width	13
Case Height	11.25
Case Length	10.75
Case Lot Cube (ft.)	0.91
Case Lot Weight (lbs.)	5.84

PRODUCT **ACCESSORIES**

Name	Item #
Half-size Super Pan® high-temperature plastic false bottom in amber	23200
Half-size Super Pan® solid high-temperature plastic cover in amber	33200
Half-size Super Pan® slotted high-temperature plastic cover in amber	34200





## Full-size 2 ½-inch-deep Super Pan® clear low-temperature plastic pan

Perfect for storage and cold applications, the Super Pan clear plastic pan by Vollrath keeps your items organized and visible. The durable, clear plastic is approved for temperatures between -40°F and 210°F and provides excellent visibility. Reinforced corners add strength, while antijam stacking lugs allow easy separation and lifting of the pan. The integral frame enhances food presentation, making this an excellent addition to a wide range of commercial operations.

Clear polycarbonate construction is strong, reliable and provides excellent visibility

Low-temperature plastic is approved for temperatures between -40°F and 210°F

Reinforced corners add strength

Integral frame enhances food presentation

Antijam stacking lugs allow easy separation and lifting of the pan

Ideal for storage and cold applications — not for use in steam environments

Made in the USA

NSF-certified



## PRODUCT SPECIFICATIONS

### Model Information

UPC

029419331895

**Unit Dimensions**

Overall Dimensions (IN)	12.812 x 20.875 x 2.5
(W) Width (IN)	12.81
(D) Depth (IN)	20.87
(H) Height (IN)	2.5
(W) Width (CM)	32.5
(D) Depth (CM)	53
(H) Height (CM)	6.3
Size	Full

**Volume**

Capacity, Brimful (QT)	8.8
Capacity, Brimful (L)	8.3

**Construction**

Color	Clear
Construction Material	Plastic

**Case Lot Measurement**

Case Lot	6
Case Width	13.25
Case Height	11.5
Case Length	21
Case Lot Cube (ft.)	1.85
Case Lot Weight (lbs.)	9.84

**PRODUCT ACCESSORIES**

Name	Item #
Full-size Super Pan® clear low-temperature plastic false bottom	29100
Full-size Super Pan® solid clear polycarbonate cover	31100
Full-size Super Pan® slotted clear polycarbonate cover	32100



## Full-size 2 ½-inch-deep Super Pan® low-temperature plastic pan in black

Perfect for storage and cold applications, the Super Pan plastic pan by Vollrath keeps your items organized and visible. The durable plastic is approved for temperatures between -40°F and 210°F, and the black color creates a sleek appearance. Reinforced corners add strength, while antijam stacking lugs allow easy separation and lifting of the pan. The integral frame enhances food presentation, making this an excellent addition to a wide range of commercial operations.

Polycarbonate construction is strong and reliable

Low-temperature plastic is approved for temperatures between -40°F and 210°F

Reinforced corners add strength

Integral frame enhances food presentation

Black color creates a sleek appearance

Antijam stacking lugs allow easy separation and lifting of the pan

Ideal for storage and cold applications — not for use in steam environments

Made in the USA



## PRODUCT SPECIFICATIONS

### Model Information

UPC

029419332199

**Unit Dimensions**

Overall Dimensions (IN)	12.812 x 20.875 x 2.5
(W) Width (IN)	12.81
(D) Depth (IN)	20.87
(H) Height (IN)	2.5
(W) Width (CM)	32.5
(D) Depth (CM)	53
(H) Height (CM)	6.3
Size	Full

**Volume**

Capacity, Brimful (QT)	8.8
Capacity, Brimful (L)	8.3

**Construction**

Color	Black
Construction Material	Plastic

**Case Lot Measurement**

Case Lot	6
Case Width	13.1
Case Height	7.6
Case Length	21
Case Lot Cube (ft.)	1.21
Case Lot Weight (lbs.)	9.66

**PRODUCT ACCESSORIES**

Name	Item #
Full-size Super Pan® solid clear polycarbonate cover	31100
Full-size Super Pan® slotted clear polycarbonate cover	32100





## Full-size 4-inch-deep Super Pan® clear low-temperature plastic pan

Perfect for storage and cold applications, the Super Pan clear plastic pan by Vollrath keeps your items organized and visible. The durable, clear plastic is approved for temperatures between -40°F and 210°F and provides excellent visibility. Reinforced corners add strength, while antijam stacking lugs allow easy separation and lifting of the pan. The integral frame enhances food presentation, making this an excellent addition to a wide range of commercial operations.

Clear polycarbonate construction is strong, reliable and provides excellent visibility

Low-temperature plastic is approved for temperatures between -40°F and 210°F

Reinforced corners add strength

Integral frame enhances food presentation

Anijam stacking lugs allow easy separation and lifting of the pan

Ideal for cold and storage applications — not for use in steam environments

Made in the USA

NSF-certified



## PRODUCT SPECIFICATIONS

### Model Information

UPC

029419331901

### Unit Dimensions

Overall Dimensions (IN)	12.812 x 20.875 x 4
(W) Width (IN)	12.81
(D) Depth (IN)	20.87
(H) Height (IN)	4
(W) Width (CM)	32.5
(D) Depth (CM)	53
(H) Height (CM)	10.2
Size	Full

### Volume

Capacity, Brimful (QT)	13.6
Capacity, Brimful (L)	12.9

### Construction

Color	Clear
Construction Material	Plastic

### Case Lot Measurement

Case Lot	6
Case Width	13.25
Case Height	11.375
Case Length	21.5
Case Lot Cube (ft.)	1.88
Case Lot Weight (lbs.)	14.2

### PRODUCT ACCESSORIES

Name	Item #
Full-size Super Pan® clear low-temperature plastic false bottom	29100
Full-size Super Pan® solid clear polycarbonate cover	31100
Full-size Super Pan® slotted clear polycarbonate cover	32100



## Full-size 4-inch-deep Super Pan® low-temperature plastic pan in black

Perfect for storage and cold applications, the Super Pan plastic pan by Vollrath keeps your items organized and visible. The durable plastic is approved for temperatures between -40°F and 210°F, and the black color creates a sleek appearance. Reinforced corners add strength, while antijam stacking lugs allow easy separation and lifting of the pan. The integral frame enhances food presentation, making this an excellent addition to a wide range of commercial operations.



Polycarbonate construction is strong and reliable

Low-temperature plastic is approved for temperatures between -40°F and 210°F

Reinforced corners add strength

Integral frame enhances food presentation

Black color creates a sleek appearance

Anijam stacking lugs allow easy separation and lifting of the pan

Ideal for cold and storage applications — not for use in steam environments

Made in the USA

NSF-certified



## PRODUCT SPECIFICATIONS

### Model Information

UPC

029419332205

**Unit Dimensions**

Overall Dimensions (IN)	12.812 x 20.875 x 4
(W) Width (IN)	12.81
(D) Depth (IN)	20.87
(H) Height (IN)	4
(W) Width (CM)	32.5
(D) Depth (CM)	53
(H) Height (CM)	10.2
Size	Full

**Volume**

Capacity, Brimful (QT)	8.8
Capacity, Brimful (L)	8.3

**Construction**

Color	Black
Construction Material	Plastic

**Case Lot Measurement**

Case Lot	6
Case Width	13
Case Height	11.65
Case Length	20.75
Case Lot Cube (ft.)	1.82
Case Lot Weight (lbs.)	12.88

**PRODUCT ACCESSORIES**

Name	Item #
Full-size Super Pan® solid clear polycarbonate cover	31100
Full-size Super Pan® slotted clear polycarbonate cover	32100





## Full-size 6-inch-deep Super Pan® clear low-temperature plastic pan

Perfect for storage and cold applications, the Super Pan clear plastic pan by Vollrath keeps your items organized and visible. The durable, clear plastic is approved for temperatures between -40°F and 210°F and provides excellent visibility. Reinforced corners add strength, while antijam stacking lugs allow easy separation and lifting of the pan. The integral frame enhances food presentation, making this an excellent addition to a wide range of commercial operations.

Clear polycarbonate construction is strong, reliable and provides excellent visibility

Low-temperature plastic is approved for temperatures between -40°F and 210°F

Reinforced corners add strength

Integral frame enhances food presentation

Anijam stacking lugs allow easy separation and lifting of the pan

Ideal for cold and storage applications — not for use in steam environments

Made in the USA

NSF-certified



## PRODUCT SPECIFICATIONS

### Model Information

UPC

029419331918

**Unit Dimensions**

Overall Dimensions (IN)	12.812 x 20.875 x 6
(W) Width (IN)	12.81
(D) Depth (IN)	20.87
(H) Height (IN)	6
(W) Width (CM)	32.5
(D) Depth (CM)	53
(H) Height (CM)	15.2
Size	Full

**Volume**

Capacity, Brimful (QT)	20.2
Capacity, Brimful (L)	19.2

**Construction**

Color	Clear
Construction Material	Plastic

**Case Lot Measurement**

Case Lot	6
Case Width	13.125
Case Height	13.25
Case Length	21.125
Case Lot Cube (ft.)	2.13
Case Lot Weight (lbs.)	14.56

PRODUCT **ACCESSORIES**

Name	Item #
Full-size Super Pan® solid clear polycarbonate cover	31100
Full-size Super Pan® slotted clear polycarbonate cover	32100



## Full-size 6-inch-deep Super Pan® low-temperature plastic pan in black

Perfect for storage and cold applications, the Super Pan plastic pan by Vollrath keeps your items organized and visible. The durable plastic is approved for temperatures between -40°F and 210°F, and the black color creates a sleek appearance. Reinforced corners add strength, while antijam stacking lugs allow easy separation and lifting of the pan. The integral frame enhances food presentation, making this an excellent addition to a wide range of commercial operations.

Polycarbonate construction is strong and reliable

Low-temperature plastic is approved for temperatures between -40°F and 210°F

Reinforced corners add strength

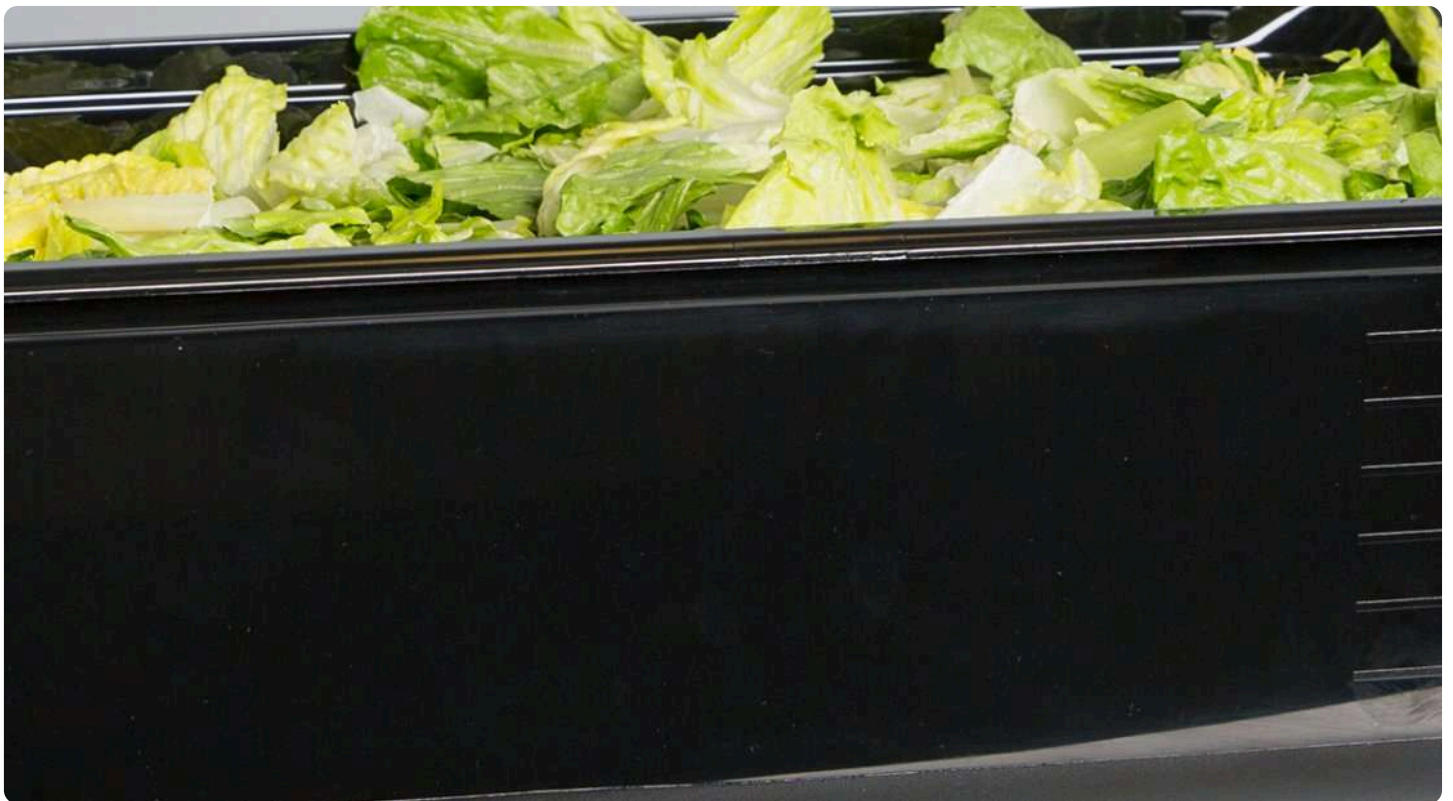
Integral frame enhances food presentation

Black color creates a sleek appearance

Antijam stacking lugs allow easy separation and lifting of the pan

Ideal for storage and cold applications — not for use in steam environments

Made in the USA



## PRODUCT SPECIFICATIONS

### Model Information

UPC

029419332212

**Unit Dimensions**

Overall Dimensions (IN)	12.812 x 20.875 x 6
(W) Width (IN)	12.81
(D) Depth (IN)	20.87
(H) Height (IN)	6
(W) Width (CM)	32.5
(D) Depth (CM)	53
(H) Height (CM)	15.2
Size	Full

**Volume**

Capacity, Brimful (QT)	8.8
Capacity, Brimful (L)	8.3

**Construction**

Color	Black
Construction Material	Plastic

**Case Lot Measurement**

Case Lot	6
Case Width	15.5
Case Height	13.65
Case Length	23.5
Case Lot Cube (ft.)	2.88
Case Lot Weight (lbs.)	15.26

**PRODUCT ACCESSORIES**



Name	Item #
Full-size Super Pan® solid clear polycarbonate cover	31100
Full-size Super Pan® slotted clear polycarbonate cover	32100





## Full-size 8-inch-deep Super Pan® clear low-temperature plastic pan

Perfect for storage and cold applications, the Super Pan clear plastic pan by Vollrath keeps your items organized and visible. The durable, clear plastic is approved for temperatures between -40°F and 210°F and provides excellent visibility. Reinforced corners add strength, while antijam stacking lugs allow easy separation and lifting of the pan. The integral frame enhances food presentation, making this an excellent addition to a wide range of commercial operations.

Clear polycarbonate construction is strong, reliable and provides excellent visibility

Low-temperature plastic is approved for temperatures between -40°F and 210°F

Reinforced corners add strength

Integral frame enhances food presentation

Anijam stacking lugs allow easy separation and lifting of the pan

Ideal for cold and storage applications — not for use in steam environments

Made in the USA

NSF-certified



## PRODUCT SPECIFICATIONS

### Model Information

UPC

029419331925

**Unit Dimensions**

Overall Dimensions (IN)	12.812 x 20.875 x 8
(W) Width (IN)	12.81
(D) Depth (IN)	20.87
(H) Height (IN)	8
(W) Width (CM)	32.5
(D) Depth (CM)	53
(H) Height (CM)	20.3
Size	Full

**Volume**

Capacity, Brimful (QT)	26.5
Capacity, Brimful (L)	25.1

**Construction**

Color	Clear
Construction Material	Plastic

**Case Lot Measurement**

Case Lot	3
Case Width	13
Case Height	11.5
Case Length	21.125
Case Lot Cube (ft.)	1.83
Case Lot Weight (lbs.)	9.72

**PRODUCT ACCESSORIES**

Name	Item #
Full-size Super Pan® solid clear polycarbonate cover	31100
Full-size Super Pan® slotted clear polycarbonate cover	32100



## Half-size 2 ½-inch-deep Super Pan® clear low-temperature plastic pan

Perfect for storage and cold applications, the Super Pan clear plastic pan by Vollrath keeps your items organized and visible. The durable, clear plastic is approved for temperatures between -40°F and 210°F and provides excellent visibility. Reinforced corners add strength, while antijam stacking lugs allow easy separation and lifting of the pan. The integral frame enhances food presentation, making this an excellent addition to a wide range of commercial operations.



Clear polycarbonate construction is strong, reliable and provides excellent visibility

Low-temperature plastic is approved for temperatures between -40°F and 210°F

Reinforced corners add strength

Integral frame enhances food presentation

Antijam stacking lugs allow easy separation and lifting of the pan

Ideal for storage and cold applications — not for use in steam environments

Made in the USA

NSF-certified



## PRODUCT SPECIFICATIONS

### Model Information

UPC

029419331932

**Unit Dimensions**

Overall Dimensions (IN)	12.812 x 10.375 x 2.5
(W) Width (IN)	12.81
(D) Depth (IN)	10.37
(H) Height (IN)	2.5
(W) Width (CM)	32.5
(D) Depth (CM)	26.4
(H) Height (CM)	6.3
Size	Half

**Volume**

Capacity, Brimful (QT)	3.9
Capacity, Brimful (L)	3.7

**Construction**

Color	Clear
Construction Material	Plastic

**Case Lot Measurement**

Case Lot	6
Case Width	13.125
Case Height	7.25
Case Length	10.5
Case Lot Cube (ft.)	0.58
Case Lot Weight (lbs.)	5.0

**PRODUCT ACCESSORIES**

Name	Item #
Half-size Super Pan® solid clear polycarbonate cover	31200
Full-size Super Pan® slotted clear polycarbonate cover	32100





## Half-size 2 ½-inch-deep Super Pan® low-temperature plastic pan in black

Perfect for storage and cold applications, the Super Pan plastic pan by Vollrath keeps your items organized and visible. The durable plastic is approved for temperatures between -40°F and 210°F, and the black color creates a sleek appearance. Reinforced corners add strength, while antijam stacking lugs allow easy separation and lifting of the pan. The integral frame enhances food presentation, making this an excellent addition to a wide range of commercial operations.

Polycarbonate construction is strong and reliable

Low-temperature plastic is approved for temperatures between -40°F and 210°F

Reinforced corners add strength

Integral frame enhances food presentation

Black color creates a sleek appearance

Antijam stacking lugs allow easy separation and lifting of the pan

Ideal for storage and cold applications — not for use in steam environments

Made in the USA



## PRODUCT SPECIFICATIONS

### Model Information

UPC

029419332236

**Unit Dimensions**

Overall Dimensions (IN)	12.812 x 10.375 x 2.5
(W) Width (IN)	12.81
(D) Depth (IN)	10.37
(H) Height (IN)	2.5
(W) Width (CM)	32.5
(D) Depth (CM)	26.4
(H) Height (CM)	6.3
Size	Half

**Volume**

Capacity, Brimful (QT)	3.9
Capacity, Brimful (L)	3.7

**Construction**

Color	Black
Construction Material	Plastic

**Case Lot Measurement**

Case Lot	6
Case Width	13.25
Case Height	7.25
Case Length	10.5
Case Lot Cube (ft.)	0.58
Case Lot Weight (lbs.)	4.9

PRODUCT **ACCESSORIES**

Name	Item #
Half-size Super Pan® solid clear polycarbonate cover	31200
Half-size Super Pan® slotted clear polycarbonate cover	32200



## Half-size 4-inch-deep Super Pan® clear low-temperature plastic pan

Perfect for storage and cold applications, the Super Pan clear plastic pan by Vollrath keeps your items organized and visible. The durable, clear plastic is approved for temperatures between -40°F and 210°F and provides excellent visibility. Reinforced corners add strength, while antijam stacking lugs allow easy separation and lifting of the pan. The integral frame enhances food presentation, making this an excellent addition to a wide range of commercial operations.

Clear polycarbonate construction is strong, reliable and provides excellent visibility

Low-temperature plastic is approved for temperatures between -40°F and 210°F

Reinforced corners add strength

Integral frame enhances food presentation

Antijam stacking lugs allow easy separation and lifting of the pan

Ideal for storage and cold applications — not for use in steam environments

Made in the USA

NSF-certified



## PRODUCT SPECIFICATIONS

### Model Information

UPC

029419331963

### Unit Dimensions

Overall Dimensions (IN)	12.812 x 10.375 x 4
-------------------------	---------------------

(W) Width (IN)	12.81
----------------	-------

(D) Depth (IN)	10.37
----------------	-------

(H) Height (IN)	4
-----------------	---

(W) Width (CM)	32.5
----------------	------

(D) Depth (CM)	26.4
----------------	------

(H) Height (CM)	10.2
-----------------	------

Size	Half
------	------

### Volume

Capacity, Brimful (QT)	5.9
------------------------	-----

Capacity, Brimful (L)	5.6
-----------------------	-----

### Construction

Color	Clear
-------	-------

Construction Material	Plastic
-----------------------	---------

### Case Lot Measurement

Case Lot	6
----------	---

Case Width	13
------------	----

Case Height	11.299219
-------------	-----------

Case Length	10.75
-------------	-------

Case Lot Cube (ft.)	0.91
---------------------	------

Case Lot Weight (lbs.)	5.84
------------------------	------

### PRODUCT ACCESSORIES

Name	Item #
Half-size Super Pan® solid clear polycarbonate cover	31200
Half-size Super Pan® slotted clear polycarbonate cover	32200





## Half-size 4-inch-deep Super Pan® low-temperature plastic pan in black

Perfect for storage and cold applications, the Super Pan plastic pan by Vollrath keeps your items organized and visible. The durable plastic is approved for temperatures between -40°F and 210°F, and the black color creates a sleek appearance. Reinforced corners add strength, while antijam stacking lugs allow easy separation and lifting of the pan. The integral frame enhances food presentation, making this an excellent addition to a wide range of commercial operations.

Polycarbonate construction is strong and reliable

Low-temperature plastic is approved for temperatures between -40°F and 210°F

Reinforced corners add strength

Integral frame enhances food presentation

Black color creates a sleek appearance

Antijam stacking lugs allow easy separation and lifting of the pan

Ideal for storage and cold applications — not for use in steam environments

NSF-certified



## PRODUCT SPECIFICATIONS

### Model Information

UPC

029419332243

### Unit Dimensions

Overall Dimensions (IN)	12.812 x 10.375 x 4
-------------------------	---------------------

(W) Width (IN)	12.81
----------------	-------

(D) Depth (IN)	10.37
----------------	-------

(H) Height (IN)	4
-----------------	---

(W) Width (CM)	32.5
----------------	------

(D) Depth (CM)	26.4
----------------	------

(H) Height (CM)	10.2
-----------------	------

Size	Half
------	------

### Volume

Capacity, Brimful (QT)	5.9
------------------------	-----

Capacity, Brimful (L)	5.6
-----------------------	-----

### Construction

Color	Black
-------	-------

Construction Material	Plastic
-----------------------	---------

### Case Lot Measurement

Case Lot	6
----------	---

Case Width	10.65
------------	-------

Case Height	11.65
-------------	-------

Case Length	13.2
-------------	------

Case Lot Cube (ft.)	0.95
---------------------	------

Case Lot Weight (lbs.)	6.64
------------------------	------

### PRODUCT ACCESSORIES

Name	Item #
Half-size Super Pan® solid clear polycarbonate cover	31200
Half-size Super Pan® slotted clear polycarbonate cover	32200



## Half-size 6-inch-deep Super Pan® clear low-temperature plastic pan

Perfect for storage and cold applications, the Super Pan clear plastic pan by Vollrath keeps your items organized and visible. The durable, clear plastic is approved for temperatures between -40°F and 210°F and provides excellent visibility. Reinforced corners add strength, while antijam stacking lugs allow easy separation and lifting of the pan. The integral frame enhances food presentation, making this an excellent addition to a wide range of commercial operations.

Clear polycarbonate construction is strong, reliable and provides excellent visibility

Low-temperature plastic is approved for temperatures between -40°F and 210°F

Reinforced corners add strength

Integral frame enhances food presentation

Antijam stacking lugs allow easy separation and lifting of the pan

Ideal for storage and cold applications — not for use in steam environments

Made in the USA

Made in the USA



## PRODUCT SPECIFICATIONS

### Model Information

UPC

029419331970

**Unit Dimensions**

Overall Dimensions (IN)	12.812 x 10.375 x 6
(W) Width (IN)	12.81
(D) Depth (IN)	10.37
(H) Height (IN)	6
(W) Width (CM)	32.5
(D) Depth (CM)	26.4
(H) Height (CM)	15.2
Size	Half

**Volume**

Capacity, Brimful (QT)	8.6
Capacity, Brimful (L)	8.1

**Construction**

Color	Clear
Construction Material	Plastic

**Case Lot Measurement**

Case Lot	6
Case Width	13
Case Height	13.25
Case Length	10.75
Case Lot Cube (ft.)	1.07
Case Lot Weight (lbs.)	7.7

**PRODUCT ACCESSORIES**



Name	Item #
Half-size Super Pan® solid clear polycarbonate cover	31200
Half-size Super Pan® slotted clear polycarbonate cover	32200





## Half-size 8-inch-deep Super Pan® clear low-temperature plastic pan

Perfect for storage and cold applications, the Super Pan clear plastic pan by Vollrath keeps your items organized and visible. The durable, clear plastic is approved for temperatures between -40°F and 210°F and provides excellent visibility. Reinforced corners add strength, while antijam stacking lugs allow easy separation and lifting of the pan. The integral frame enhances food presentation, making this an excellent addition to a wide range of commercial operations.

Clear polycarbonate construction is strong, reliable and provides excellent visibility

Low-temperature plastic is approved for temperatures between -40°F and 210°F

Reinforced corners add strength

Integral frame enhances food presentation

Antijam stacking lugs allow easy separation and lifting of the pan

Ideal for storage and cold applications — not for use in steam environments

Made in the USA

Made in the USA



## PRODUCT SPECIFICATIONS

### Model Information

UPC

029419332021

**Unit Dimensions**

Overall Dimensions (IN)	12.812 x 10.375 x 8
(W) Width (IN)	12.81
(D) Depth (IN)	10.37
(H) Height (IN)	8
(W) Width (CM)	32.5
(D) Depth (CM)	26.4
(H) Height (CM)	20.3
Size	Half

**Volume**

Capacity, Brimful (QT)	11
Capacity, Brimful (L)	10.4

**Construction**

Color	Clear
Construction Material	Plastic

**Case Lot Measurement**

Case Lot	3
Case Width	13
Case Height	11.375
Case Length	10.75
Case Lot Cube (ft.)	0.92
Case Lot Weight (lbs.)	5.2

**PRODUCT ACCESSORIES**

Name	Item #
Half-size Super Pan® solid clear polycarbonate cover	31200
Half-size Super Pan® slotted clear polycarbonate cover	32200



## Third-size 2 ½-inch-deep Super Pan<sup>®</sup> clear low-temperature plastic pan

Perfect for storage and cold applications, the Super Pan clear plastic pan by Vollrath keeps your items organized and visible. The durable, clear plastic is approved for temperatures between -40°F and 210°F and provides excellent visibility. Reinforced corners add strength, while antijam stacking lugs allow easy separation and lifting of the pan. The integral frame enhances food presentation, making this an excellent addition to a wide range of commercial operations.

Clear polycarbonate construction is strong, reliable and provides excellent visibility

Low-temperature plastic is approved for temperatures between -40°F and 210°F

Reinforced corners add strength

Integral frame enhances food presentation

Antijam stacking lugs allow easy separation and lifting of the pan

Ideal for storage and cold applications — not for use in steam environments

Made in the USA

Made in the USA

## PRODUCT SPECIFICATIONS

### Model Information

UPC	029419332038
-----	--------------

### Unit Dimensions

Overall Dimensions (IN)	12.812 x 6.937 x 2.5
-------------------------	----------------------

(W) Width (IN)	12.81
----------------	-------

(D) Depth (IN)	6.93
----------------	------

(H) Height (IN)	2.5
-----------------	-----

(W) Width (CM)	32.5
----------------	------

(D) Depth (CM)	17.6
----------------	------

(H) Height (CM)	6.3
-----------------	-----

Size	Third
------	-------

### Volume

Capacity, Brimful (QT)	2.4
------------------------	-----

Capacity, Brimful (L)	2.3
-----------------------	-----

**Construction**

Color	Clear
Construction Material	Plastic

**Case Lot Measurement**

Case Lot	6
Case Width	7.25
Case Height	7.625
Case Length	13
Case Lot Cube (ft.)	0.42
Case Lot Weight (lbs.)	3.16

PRODUCT **ACCESSORIES**

Name	Item #
Third-size Super Pan® solid clear polycarbonate cover	31300
Third-size Super Pan® slotted clear polycarbonate cover	32300



## Third-size 2 ½-inch-deep Super Pan<sup>®</sup> low-temperature plastic pan in black

Perfect for storage and cold applications, the Super Pan plastic pan by Vollrath keeps your items organized and visible. The durable plastic is approved for temperatures between -40°F and 210°F, and the black color creates a sleek appearance. Reinforced corners add strength, while antijam stacking lugs allow easy separation and lifting of the pan. The integral frame enhances food presentation, making this an excellent addition to a wide range of commercial operations.



Polycarbonate construction is strong and reliable

Low-temperature plastic is approved for temperatures between -40°F and 210°F

Reinforced corners add strength

Integral frame enhances food presentation

Black color creates a sleek appearance

Antijam stacking lugs allow easy separation and lifting of the pan

Ideal for storage and cold applications — not for use in steam environments

NSF-certified



## PRODUCT SPECIFICATIONS

### Model Information

UPC

029419332274

**Unit Dimensions**

Overall Dimensions (IN)	12.812 x 6.937 x 2.5
(W) Width (IN)	12.81
(D) Depth (IN)	6.93
(H) Height (IN)	2.5
(W) Width (CM)	32.5
(D) Depth (CM)	17.6
(H) Height (CM)	6.3
Size	Third

**Volume**

Capacity, Brimful (QT)	2.4
Capacity, Brimful (L)	2.3

**Construction**

Color	Black
Construction Material	Plastic

**Case Lot Measurement**

Case Lot	6
Case Width	7.25
Case Height	7.75
Case Length	12.9
Case Lot Cube (ft.)	0.42
Case Lot Weight (lbs.)	3.18

PRODUCT **ACCESSORIES**

Name	Item #
Third-size Super Pan® solid clear polycarbonate cover	31300
Third-size Super Pan® slotted clear polycarbonate cover	32300



## Third-size 4-inch-deep Super Pan® clear low-temperature plastic pan

Perfect for storage and cold applications, the Super Pan clear plastic pan by Vollrath keeps your items organized and visible. The durable, clear plastic is approved for temperatures between -40°F and 210°F and provides excellent visibility. Reinforced corners add strength, while antijam stacking lugs allow easy separation and lifting of the pan. The integral frame enhances food presentation, making this an excellent addition to a wide range of commercial operations.

Clear polycarbonate construction is strong, reliable and provides excellent visibility

Low-temperature plastic is approved for temperatures between -40°F and 210°F

Reinforced corners add strength

Integral frame enhances food presentation

Antijam stacking lugs allow easy separation and lifting of the pan

Ideal for storage and cold applications — not for use in steam environments

Made in the USA

Made in the USA



## PRODUCT SPECIFICATIONS

### Model Information

UPC

029419332069

### Unit Dimensions

Overall Dimensions (IN)	12.812 x 6.937 x 4
(W) Width (IN)	12.81
(D) Depth (IN)	6.93
(H) Height (IN)	4
(W) Width (CM)	32.5
(D) Depth (CM)	17.6
(H) Height (CM)	10.2
Size	Third

### Volume

Capacity, Brimful (QT)	3.6
Capacity, Brimful (L)	3.4

### Construction

Color	Clear
Construction Material	Plastic

### Case Lot Measurement

Case Lot	6
Case Width	7.625
Case Height	11.5
Case Length	13
Case Lot Cube (ft.)	0.66
Case Lot Weight (lbs.)	4.16

### PRODUCT ACCESSORIES

Name	Item #
Third-size Super Pan® solid clear polycarbonate cover	31300
Third-size Super Pan® slotted clear polycarbonate cover	32300



## Third-size 4-inch-deep Super Pan<sup>®</sup> low-temperature plastic pan in black

Perfect for storage and cold applications, the Super Pan plastic pan by Vollrath keeps your items organized and visible. The durable plastic is approved for temperatures between -40°F and 210°F, and the black color creates a sleek appearance. Reinforced corners add strength, while antijam stacking lugs allow easy separation and lifting of the pan. The integral frame enhances food presentation, making this an excellent addition to a wide range of commercial operations.



Polycarbonate construction is strong and reliable

Low-temperature plastic is approved for temperatures between -40°F and 210°F

Reinforced corners add strength

Integral frame enhances food presentation

Black color creates a sleek appearance

Antijam stacking lugs allow easy separation and lifting of the pan

Ideal for storage and cold applications — not for use in steam environments

NSF-certified



## PRODUCT SPECIFICATIONS

### Model Information

UPC

029419332281

### Unit Dimensions

Overall Dimensions (IN)	12.812 x 6.937 x 4
(W) Width (IN)	12.81
(D) Depth (IN)	6.93
(H) Height (IN)	4
(W) Width (CM)	32.5
(D) Depth (CM)	17.6
(H) Height (CM)	10.2
Size	Third

### Volume

Capacity, Brimful (QT)	3.6
Capacity, Brimful (L)	3.4

### Construction

Color	Black
Construction Material	Plastic

### Case Lot Measurement

Case Lot	6
Case Width	7.25
Case Height	11.375
Case Length	13
Case Lot Cube (ft.)	0.62
Case Lot Weight (lbs.)	4.32

### PRODUCT ACCESSORIES

Name	Item #
Third-size Super Pan® solid clear polycarbonate cover	31300
Third-size Super Pan® slotted clear polycarbonate cover	32300



## Third-size 6-inch-deep Super Pan® clear low-temperature plastic pan

Perfect for storage and cold applications, the Super Pan clear plastic pan by Vollrath keeps your items organized and visible. The durable, clear plastic is approved for temperatures between -40°F and 210°F and provides excellent visibility. Reinforced corners add strength, while antijam stacking lugs allow easy separation and lifting of the pan. The integral frame enhances food presentation, making this an excellent addition to a wide range of commercial operations.

Clear polycarbonate construction is strong, reliable and provides excellent visibility

Low-temperature plastic is approved for temperatures between -40°F and 210°F

Reinforced corners add strength

Integral frame enhances food presentation

Antijam stacking lugs allow easy separation and lifting of the pan

Ideal for storage and cold applications — not for use in steam environments

Made in the USA

Made in the USA



## PRODUCT SPECIFICATIONS

### Model Information

UPC

029419332076

### Unit Dimensions

Overall Dimensions (IN)	12.812 x 6.937 x 6
(W) Width (IN)	12.81
(D) Depth (IN)	6.93
(H) Height (IN)	6
(W) Width (CM)	32.5
(D) Depth (CM)	17.6
(H) Height (CM)	15.2
Size	Third

### Volume

Capacity, Brimful (QT)	5.3
Capacity, Brimful (L)	5.1

### Construction

Color	Clear
Construction Material	Plastic

### Case Lot Measurement

Case Lot	6
Case Width	7.25
Case Height	13.5
Case Length	13
Case Lot Cube (ft.)	0.74
Case Lot Weight (lbs.)	5.4

### PRODUCT ACCESSORIES

Name	Item #
Third-size Super Pan® solid clear polycarbonate cover	31300
Third-size Super Pan® slotted clear polycarbonate cover	32300



## Third-size 6-inch-deep Super Pan® low-temperature plastic pan in black

Perfect for storage and cold applications, the Super Pan plastic pan by Vollrath keeps your items organized and visible. The durable plastic is approved for temperatures between -40°F and 210°F, and the black color creates a sleek appearance. Reinforced corners add strength, while antijam stacking lugs allow easy separation and lifting of the pan. The integral frame enhances food presentation, making this an excellent addition to a wide range of commercial operations.



Polycarbonate construction is strong and reliable

Low-temperature plastic is approved for temperatures between -40°F and 210°F

Reinforced corners add strength

Integral frame enhances food presentation

Black color creates a sleek appearance

Antijam stacking lugs allow easy separation and lifting of the pan

Ideal for storage and cold applications — not for use in steam environments

NSF-certified



## PRODUCT SPECIFICATIONS

### Model Information

UPC

029419332298

### Unit Dimensions

Overall Dimensions (IN)	12.812 x 6.937 x 6
(W) Width (IN)	12.81
(D) Depth (IN)	6.93
(H) Height (IN)	6
(W) Width (CM)	32.5
(D) Depth (CM)	17.6
(H) Height (CM)	15.2
Size	Third

### Volume

Capacity, Brimful (QT)	5.3
Capacity, Brimful (L)	5.1

### Construction

Color	Black
Construction Material	Plastic

### Case Lot Measurement

Case Lot	6
Case Width	7
Case Height	13.3
Case Length	13
Case Lot Cube (ft.)	0.7
Case Lot Weight (lbs.)	5.46

### PRODUCT ACCESSORIES

Name	Item #
Third-size Super Pan® solid clear polycarbonate cover	31300
Third-size Super Pan® slotted clear polycarbonate cover	32300



## Fourth-size 2 ½-inch-deep Super Pan<sup>®</sup> clear low-temperature plastic pan

Perfect for storage and cold applications, the Super Pan clear plastic pan by Vollrath keeps your items organized and visible. The durable, clear plastic is approved for temperatures between -40°F and 210°F and provides excellent visibility. Reinforced corners add strength, while antijam stacking lugs allow easy separation and lifting of the pan. The integral frame enhances food presentation, making this an excellent addition to a wide range of commercial operations.

Clear polycarbonate construction is strong, reliable and provides excellent visibility

Low-temperature plastic is approved for temperatures between -40°F and 210°F

Reinforced corners add strength

Integral frame enhances food presentation

Antijam stacking lugs allow easy separation and lifting of the pan

Ideal for storage and cold applications — not for use in steam environments

Made in the USA

Made in the USA



## PRODUCT SPECIFICATIONS

### Model Information

UPC

029419332144

**Unit Dimensions**

Overall Dimensions (IN)	6.375 x 10.437 x 2.5
(W) Width (IN)	6.37
(D) Depth (IN)	10.37
(H) Height (IN)	2.5
(W) Width (CM)	16.2
(D) Depth (CM)	26.5
(H) Height (CM)	6.3
Size	Fourth

**Volume**

Capacity, Brimful (QT)	1.8
Capacity, Brimful (L)	1.7

**Construction**

Color	Clear
Construction Material	Plastic

**Case Lot Measurement**

Case Lot	6
Case Width	6.75
Case Height	7.45
Case Length	10.72
Case Lot Cube (ft.)	0.31
Case Lot Weight (lbs.)	2.3

**PRODUCT ACCESSORIES**

Name	Item #
Fourth-size Super Pan® solid clear polycarbonate cover	31400
Fourth-size Super Pan® slotted clear polycarbonate cover	32400





## Fourth-size 2 ½-inch-deep Super Pan<sup>®</sup> low-temperature plastic pan in black

Perfect for storage and cold applications, the Super Pan plastic pan by Vollrath keeps your items organized and visible. The durable plastic is approved for temperatures between -40°F and 210°F, and the black color creates a sleek appearance. Reinforced corners add strength, while antijam stacking lugs allow easy separation and lifting of the pan. The integral frame enhances food presentation, making this an excellent addition to a wide range of commercial operations.



Polycarbonate construction is strong and reliable

Low-temperature plastic is approved for temperatures between -40°F and 210°F

Reinforced corners add strength

Integral frame enhances food presentation

Black color creates a sleek appearance

Antijam stacking lugs allow easy separation and lifting of the pan

Ideal for storage and cold applications — not for use in steam environments

NSF-certified



## PRODUCT SPECIFICATIONS

### Model Information

UPC

029419332366

**Unit Dimensions**

Overall Dimensions (IN)	6.375 x 10.437 x 2.5
(W) Width (IN)	6.37
(D) Depth (IN)	10.37
(H) Height (IN)	2.5
(W) Width (CM)	16.2
(D) Depth (CM)	26.5
(H) Height (CM)	6.3
Size	Fourth

**Volume**

Capacity, Brimful (QT)	1.8
Capacity, Brimful (L)	1.7

**Construction**

Color	Black
Construction Material	Plastic

**Case Lot Measurement**

Case Lot	6
Case Width	6.75
Case Height	7.375
Case Length	10.5
Case Lot Cube (ft.)	0.3
Case Lot Weight (lbs.)	2.36

**PRODUCT ACCESSORIES**

Name	Item #
Fourth-size Super Pan® solid clear polycarbonate cover	31400
Fourth-size Super Pan® slotted clear polycarbonate cover	32400



## Fourth-size 4-inch-deep Super Pan® clear low-temperature plastic pan

Perfect for storage and cold applications, the Super Pan clear plastic pan by Vollrath keeps your items organized and visible. The durable, clear plastic is approved for temperatures between -40°F and 210°F and provides excellent visibility. Reinforced corners add strength, while antijam stacking lugs allow easy separation and lifting of the pan. The integral frame enhances food presentation, making this an excellent addition to a wide range of commercial operations.

Clear polycarbonate construction is strong, reliable and provides excellent visibility

Low-temperature plastic is approved for temperatures between -40°F and 210°F

Reinforced corners add strength

Integral frame enhances food presentation

Antijam stacking lugs allow easy separation and lifting of the pan

Ideal for storage and cold applications — not for use in steam environments

Made in the USA

Made in the USA



## PRODUCT SPECIFICATIONS

### Model Information

UPC

029419332151

**Unit Dimensions**

Overall Dimensions (IN)	6.375 x 10.437 x 4
(W) Width (IN)	6.37
(D) Depth (IN)	10.37
(H) Height (IN)	4
(W) Width (CM)	16.2
(D) Depth (CM)	26.5
(H) Height (CM)	10.2
Size	Fourth

**Volume**

Capacity, Brimful (QT)	2.7
Capacity, Brimful (L)	2.5

**Construction**

Color	Clear
Construction Material	Plastic

**Case Lot Measurement**

Case Lot	6
Case Width	6.75
Case Height	13.5
Case Length	10.6
Case Lot Cube (ft.)	0.56
Case Lot Weight (lbs.)	3.04

PRODUCT **ACCESSORIES**

Name	Item #
Fourth-size Super Pan® solid clear polycarbonate cover	31400
Fourth-size Super Pan® slotted clear polycarbonate cover	32400



## Fourth-size 4-inch-deep Super Pan® low-temperature plastic pan in black

Perfect for storage and cold applications, the Super Pan plastic pan by Vollrath keeps your items organized and visible. The durable plastic is approved for temperatures between -40°F and 210°F, and the black color creates a sleek appearance. Reinforced corners add strength, while antijam stacking lugs allow easy separation and lifting of the pan. The integral frame enhances food presentation, making this an excellent addition to a wide range of commercial operations.



Polycarbonate construction is strong and reliable

Low-temperature plastic is approved for temperatures between -40°F and 210°F

Reinforced corners add strength

Integral frame enhances food presentation

Black color creates a sleek appearance

Antijam stacking lugs allow easy separation and lifting of the pan

Ideal for storage and cold applications — not for use in steam environments

NSF-certified



## PRODUCT SPECIFICATIONS

### Model Information

UPC

029419332373

**Unit Dimensions**

Overall Dimensions (IN)	6.375 x 10.437 x 4
(W) Width (IN)	6.37
(D) Depth (IN)	10.37
(H) Height (IN)	4
(W) Width (CM)	16.2
(D) Depth (CM)	26.5
(H) Height (CM)	10.2
Size	Fourth

**Volume**

Capacity, Brimful (QT)	2.7
Capacity, Brimful (L)	2.5

**Construction**

Color	Black
Construction Material	Plastic

**Case Lot Measurement**

Case Lot	6
Case Width	6.5
Case Height	13.385834
Case Length	10.75
Case Lot Cube (ft.)	0.54
Case Lot Weight (lbs.)	3.1

PRODUCT **ACCESSORIES**

Name	Item #
Fourth-size Super Pan® solid clear polycarbonate cover	31400
Fourth-size Super Pan® slotted clear polycarbonate cover	32400



## Fourth-size 6-inch-deep Super Pan® clear low-temperature plastic pan

Perfect for storage and cold applications, the Super Pan clear plastic pan by Vollrath keeps your items organized and visible. The durable, clear plastic is approved for temperatures between -40°F and 210°F and provides excellent visibility. Reinforced corners add strength, while antijam stacking lugs allow easy separation and lifting of the pan. The integral frame enhances food presentation, making this an excellent addition to a wide range of commercial operations.

Clear polycarbonate construction is strong, reliable and provides excellent visibility

Low-temperature plastic is approved for temperatures between -40°F and 210°F

Reinforced corners add strength

Integral frame enhances food presentation

Antijam stacking lugs allow easy separation and lifting of the pan

Ideal for storage and cold applications — not for use in steam environments

Ideal for storage and cold applications — not for use in steam environments

Made in the USA



## PRODUCT SPECIFICATIONS

### Model Information

UPC

029419332168



**Unit Dimensions**

Overall Dimensions (IN)	6.375 x 10.437 x 6
(W) Width (IN)	6.37
(D) Depth (IN)	10.37
(H) Height (IN)	6
(W) Width (CM)	16.2
(D) Depth (CM)	26.5
(H) Height (CM)	15.2
Size	Fourth

**Volume**

Capacity, Brimful (QT)	3.8
Capacity, Brimful (L)	3.6

**Construction**

Color	Clear
Construction Material	Plastic

**Case Lot Measurement**

Case Lot	6
Case Width	6.75
Case Height	13.4
Case Length	10.5
Case Lot Cube (ft.)	0.55
Case Lot Weight (lbs.)	3.9

**PRODUCT ACCESSORIES**

Name	Item #
Fourth-size Super Pan® solid clear polycarbonate cover	31400
Fourth-size Super Pan® slotted clear polycarbonate cover	32400



## Fourth-size 6-inch-deep Super Pan<sup>®</sup> low-temperature plastic pan in black

Perfect for storage and cold applications, the Super Pan plastic pan by Vollrath keeps your items organized and visible. The durable plastic is approved for temperatures between -40°F and 210°F, and the black color creates a sleek appearance. Reinforced corners add strength, while antijam stacking lugs allow easy separation and lifting of the pan. The integral frame enhances food presentation, making this an excellent addition to a wide range of commercial operations.



Polycarbonate construction is strong and reliable

Low-temperature plastic is approved for temperatures between -40°F and 210°F

Reinforced corners add strength

Integral frame enhances food presentation

Black color creates a sleek appearance

Antijam stacking lugs allow easy separation and lifting of the pan

NSF-certified

NSF-certified



## PRODUCT SPECIFICATIONS

### Model Information

UPC

029419332380

**Unit Dimensions**

Overall Dimensions (IN)	6.375 x 10.437 x 6
(W) Width (IN)	6.37
(D) Depth (IN)	10.37
(H) Height (IN)	6
(W) Width (CM)	16.2
(D) Depth (CM)	26.5
(H) Height (CM)	15.2
Size	Fourth

**Volume**

Capacity, Brimful (QT)	3.8
Capacity, Brimful (L)	3.6

**Construction**

Color	Black
Construction Material	Plastic

**Case Lot Measurement**

Case Lot	6
Case Width	6.5
Case Height	13.5
Case Length	10.75
Case Lot Cube (ft.)	0.55
Case Lot Weight (lbs.)	3.36

PRODUCT **ACCESSORIES**

Name	Item #
Fourth-size Super Pan® solid clear polycarbonate cover	31400
Fourth-size Super Pan® slotted clear polycarbonate cover	32400



## Half-long-size 2 ½-inch-deep Super Pan® clear low-temperature plastic pan

Perfect for storage and cold applications, the Super Pan clear plastic pan by Vollrath keeps your items organized and visible. The durable, clear plastic is approved for temperatures between -40°F and 210°F and provides excellent visibility. Reinforced corners add strength, while antijam stacking lugs allow easy separation and lifting of the pan. The integral frame enhances food presentation, making this an excellent addition to a wide range of commercial operations.

Clear polycarbonate construction is strong, reliable and provides excellent visibility

Low-temperature plastic is approved for temperatures between -40°F and 210°F

Reinforced corners add strength

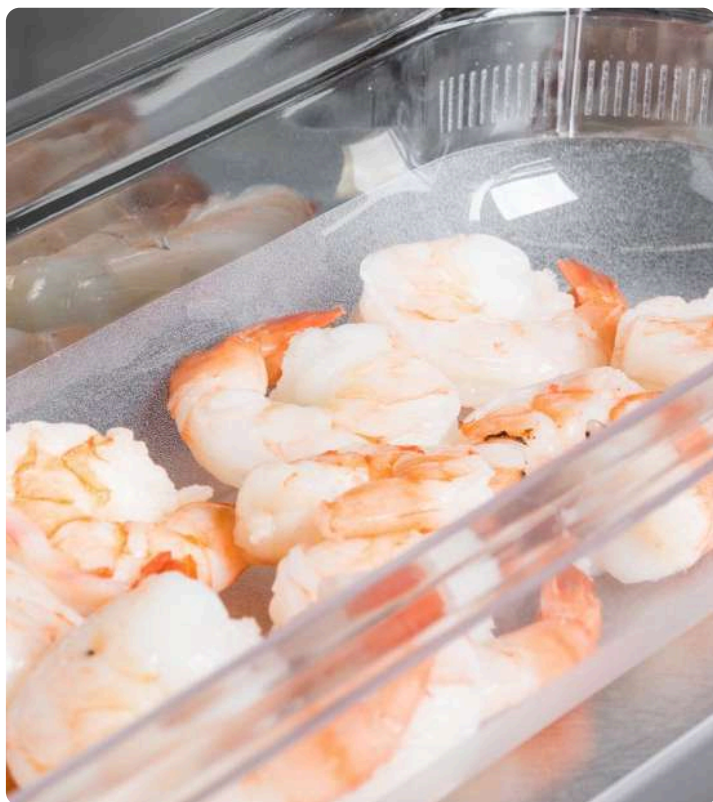
Integral frame enhances food presentation

Antijam stacking lugs allow easy separation and lifting of the pan

Ideal for storage and cold applications — not for use in steam environments

Ideal for storage and cold applications — not for use in steam environments

Made in the USA



## PRODUCT **SPECIFICATIONS**

### **Model Information**

UPC

029419332175

**Unit Dimensions**

Overall Dimensions (IN)	6.375 x 20.875 x 2.5
(W) Width (IN)	6.37
(D) Depth (IN)	20.87
(H) Height (IN)	2.5
(W) Width (CM)	16.2
(D) Depth (CM)	53
(H) Height (CM)	6.3
Size	Half-Long

**Volume**

Capacity, Brimful (QT)	3.8
Capacity, Brimful (L)	3.6

**Construction**

Color	Clear
Construction Material	Plastic

**Case Lot Measurement**

Case Lot	6
Case Width	6.625
Case Height	7.5
Case Length	21.125
Case Lot Cube (ft.)	0.61
Case Lot Weight (lbs.)	6.05

PRODUCT **ACCESSORIES**

**Name**

**Item #**

Half-long-size Super Pan® solid clear polycarbonate cover

31500



## Half-long-size 2 ½-inch-deep Super Pan<sup>®</sup> low-temperature plastic pan in black

Perfect for storage and cold applications, the Super Pan plastic pan by Vollrath keeps your items organized and visible. The durable plastic is approved for temperatures between -40°F and 210°F, and the black color creates a sleek appearance. Reinforced corners add strength, while antijam stacking lugs allow easy separation and lifting of the pan. The integral frame enhances food presentation, making this an excellent addition to a wide range of commercial operations.



Polycarbonate construction is strong and reliable

Low-temperature plastic is approved for temperatures between -40°F and 210°F

Reinforced corners add strength

Integral frame enhances food presentation

Black color creates a sleek appearance

Antijam stacking lugs allow easy separation and lifting of the pan

NSF-certified

NSF-certified



## PRODUCT SPECIFICATIONS

### Model Information

UPC

029419332397

**Unit Dimensions**

Overall Dimensions (IN)	6.375 x 20.875 x 2.5
(W) Width (IN)	6.37
(D) Depth (IN)	20.87
(H) Height (IN)	2.5
(W) Width (CM)	16.2
(D) Depth (CM)	53
(H) Height (CM)	6.3
Size	Half-Long

**Volume**

Capacity, Brimful (QT)	3.8
Capacity, Brimful (L)	3.6

**Construction**

Color	Black
Construction Material	Plastic

**Case Lot Measurement**

Case Lot	6
Case Width	6.65
Case Height	7.283469
Case Length	21
Case Lot Cube (ft.)	0.62
Case Lot Weight (lbs.)	5.26

PRODUCT **ACCESSORIES**

**Name**

**Item #**

Half-long-size Super Pan® solid clear polycarbonate cover

31500



## Half-long-size 4-inch-deep Super Pan<sup>®</sup> clear low-temperature plastic pan

Perfect for storage and cold applications, the Super Pan clear plastic pan by Vollrath keeps your items organized and visible. The durable, clear plastic is approved for temperatures between -40°F and 210°F and provides excellent visibility. Reinforced corners add strength, while antijam stacking lugs allow easy separation and lifting of the pan. The integral frame enhances food presentation, making this an excellent addition to a wide range of commercial operations.

Clear polycarbonate construction is strong, reliable and provides excellent visibility

Low-temperature plastic is approved for temperatures between -40°F and 210°F

Reinforced corners add strength

Integral frame enhances food presentation

Antijam stacking lugs allow easy separation and lifting of the pan

Antijam stacking lugs allow easy separation and lifting of the pan

Ideal for storage and cold applications — not for use in steam environments

Made in the USA



## PRODUCT **SPECIFICATIONS**

### **Model Information**

UPC

029419332182

**Unit Dimensions**

Overall Dimensions (IN)	6.375 x 20.875 x 4
(W) Width (IN)	6.37
(D) Depth (IN)	20.87
(H) Height (IN)	4
(W) Width (CM)	16.2
(D) Depth (CM)	53
(H) Height (CM)	10.2
Size	Half-Long

**Volume**

Capacity, Brimful (QT)	5.7
Capacity, Brimful (L)	5.4

**Construction**

Color	Clear
Construction Material	Plastic

**Case Lot Measurement**

Case Lot	3
Case Width	7
Case Height	7.5
Case Length	21
Case Lot Cube (ft.)	0.64
Case Lot Weight (lbs.)	3.52

PRODUCT **ACCESSORIES**

**Name**

**Item #**

Half-long-size Super Pan® solid clear polycarbonate cover

31500



## Half-long-size 4-inch-deep Super Pan<sup>®</sup> low-temperature plastic pan in black

Perfect for storage and cold applications, the Super Pan plastic pan by Vollrath keeps your items organized and visible. The durable plastic is approved for temperatures between -40°F and 210°F, and the black color creates a sleek appearance. Reinforced corners add strength, while antijam stacking lugs allow easy separation and lifting of the pan. The integral frame enhances food presentation, making this an excellent addition to a wide range of commercial operations.



Polycarbonate construction is strong and reliable

Low-temperature plastic is approved for temperatures between -40°F and 210°F

Reinforced corners add strength

Integral frame enhances food presentation

Black color creates a sleek appearance

NSF-certified

Made in the USA

NSF-certified



## PRODUCT SPECIFICATIONS

### Model Information

UPC

029419332403

### Unit Dimensions

Overall Dimensions (IN)	6.375 x 20.875 x 4
(W) Width (IN)	6.37
(D) Depth (IN)	20.87
(H) Height (IN)	4
(W) Width (CM)	16.2
(D) Depth (CM)	53
(H) Height (CM)	10.2
Size	Half-Long

**Volume**

Capacity, Brimful (QT)	5.7
Capacity, Brimful (L)	5.4

**Construction**

Color	Black
Construction Material	Plastic

**Case Lot Measurement**

Case Lot	3
Case Width	6.65
Case Height	7.65
Case Length	21
Case Lot Cube (ft.)	0.62
Case Lot Weight (lbs.)	3.48

PRODUCT **ACCESSORIES**

**Name**

**Item #**

Half-long-size Super Pan® solid clear polycarbonate cover

31500



## Sixth-size 2 ½-inch-deep Super Pan<sup>®</sup> clear low-temperature plastic pan

Perfect for storage and cold applications, the Super Pan clear plastic pan by Vollrath keeps your items organized and visible. The durable, clear plastic is approved for temperatures between -40°F and 210°F and provides excellent visibility. Reinforced corners add strength, while antijam stacking lugs allow easy separation and lifting of the pan. The integral frame enhances food presentation, making this an excellent addition to a wide range of commercial operations.

Clear polycarbonate construction is strong, reliable and provides excellent visibility

Low-temperature plastic is approved for temperatures between -40°F and 210°F

Reinforced corners add strength

Integral frame enhances food presentation

Antijam stacking lugs allow easy separation and lifting of the pan

Antijam stacking lugs allow easy separation and lifting of the pan

Ideal for storage and cold applications — not for use in steam environments

Made in the USA

PRODUCT **SPECIFICATIONS**

**Model Information**

UPC	029419332090
-----	--------------

**Unit Dimensions**

Overall Dimensions (IN)	6.375 x 6.937 x 2.5
(W) Width (IN)	6.37
(D) Depth (IN)	6.93
(H) Height (IN)	2.5
(W) Width (CM)	16.2
(D) Depth (CM)	17.6
(H) Height (CM)	6.3
Size	Sixth

**Volume**

Capacity, Brimful (QT)	1.1
Capacity, Brimful (L)	1

**Construction**

Color	Clear
Construction Material	Plastic

**Case Lot Measurement**

Case Lot	6
Case Width	7
Case Height	6.5
Case Length	7.25
Case Lot Cube (ft.)	0.19
Case Lot Weight (lbs.)	1.66

PRODUCT **ACCESSORIES**

Name	Item #
Sixth-size Super Pan® solid clear polycarbonate cover	31600
Sixth-size Super Pan® slotted clear polycarbonate cover	32600



## Sixth-size 2 ½-inch-deep Super Pan<sup>®</sup> low-temperature plastic pan in black

Perfect for storage and cold applications, the Super Pan plastic pan by Vollrath keeps your items organized and visible. The durable plastic is approved for temperatures between -40°F and 210°F, and the black color creates a sleek appearance. Reinforced corners add strength, while antijam stacking lugs allow easy separation and lifting of the pan. The integral frame enhances food presentation, making this an excellent addition to a wide range of commercial operations.



Polycarbonate construction is strong and reliable

Low-temperature plastic is approved for temperatures between -40°F and 210°F

Reinforced corners add strength

Integral frame enhances food presentation

Black color creates a sleek appearance

NSF-certified

Made in the USA

NSF-certified



## PRODUCT SPECIFICATIONS

### Model Information

UPC

029419332311

### Unit Dimensions



Overall Dimensions (IN)	6.375 x 6.937 x 2.5
(W) Width (IN)	6.37
(D) Depth (IN)	6.93
(H) Height (IN)	2.5
(W) Width (CM)	16.2
(D) Depth (CM)	17.6
(H) Height (CM)	6.3
Size	Sixth

**Volume**

Capacity, Brimful (QT)	1.1
Capacity, Brimful (L)	1

**Construction**

Color	Black
Construction Material	Plastic

**Case Lot Measurement**

Case Lot	6
Case Width	7.125
Case Height	7.25
Case Length	6.75
Case Lot Cube (ft.)	0.2
Case Lot Weight (lbs.)	1.66

PRODUCT **ACCESSORIES**

Name	Item #
Sixth-size Super Pan® solid clear polycarbonate cover	31600
Sixth-size Super Pan® slotted clear polycarbonate cover	32600



## Sixth-size 4-inch-deep Super Pan® clear low-temperature plastic pan

Perfect for storage and cold applications, the Super Pan clear plastic pan by Vollrath keeps your items organized and visible. The durable, clear plastic is approved for temperatures between -40°F and 210°F and provides excellent visibility. Reinforced corners add strength, while antijam stacking lugs allow easy separation and lifting of the pan. The integral frame enhances food presentation, making this an excellent addition to a wide range of commercial operations.

Clear polycarbonate construction is strong, reliable and provides excellent visibility

Low-temperature plastic is approved for temperatures between -40°F and 210°F

Reinforced corners add strength

Integral frame enhances food presentation

Antijam stacking lugs allow easy separation and lifting of the pan

Antijam stacking lugs allow easy separation and lifting of the pan

Ideal for storage and cold applications — not for use in steam environments

Made in the USA



## PRODUCT SPECIFICATIONS

### Model Information

UPC

029419332106

**Unit Dimensions**

Overall Dimensions (IN)	6.375 x 6.937 x 4
(W) Width (IN)	6.37
(D) Depth (IN)	6.93
(H) Height (IN)	4
(W) Width (CM)	16.2
(D) Depth (CM)	17.6
(H) Height (CM)	10.2
Size	Sixth

**Volume**

Capacity, Brimful (QT)	1.6
Capacity, Brimful (L)	1.5

**Construction**

Color	Clear
Construction Material	Plastic

**Case Lot Measurement**

Case Lot	6
Case Width	7.125
Case Height	6.75
Case Length	13.75
Case Lot Cube (ft.)	0.38
Case Lot Weight (lbs.)	2.12

**PRODUCT ACCESSORIES**

Name	Item #
Sixth-size Super Pan® solid clear polycarbonate cover	31600
Sixth-size Super Pan® slotted clear polycarbonate cover	32600



## Sixth-size 4-inch-deep Super Pan® low-temperature plastic pan in black

Perfect for storage and cold applications, the Super Pan plastic pan by Vollrath keeps your items organized and visible. The durable plastic is approved for temperatures between -40°F and 210°F, and the black color creates a sleek appearance. Reinforced corners add strength, while antijam stacking lugs allow easy separation and lifting of the pan. The integral frame enhances food presentation, making this an excellent addition to a wide range of commercial operations.

Polycarbonate construction is strong and reliable

Low-temperature plastic is approved for temperatures between -40°F and 210°F

Reinforced corners add strength

Integral frame enhances food presentation

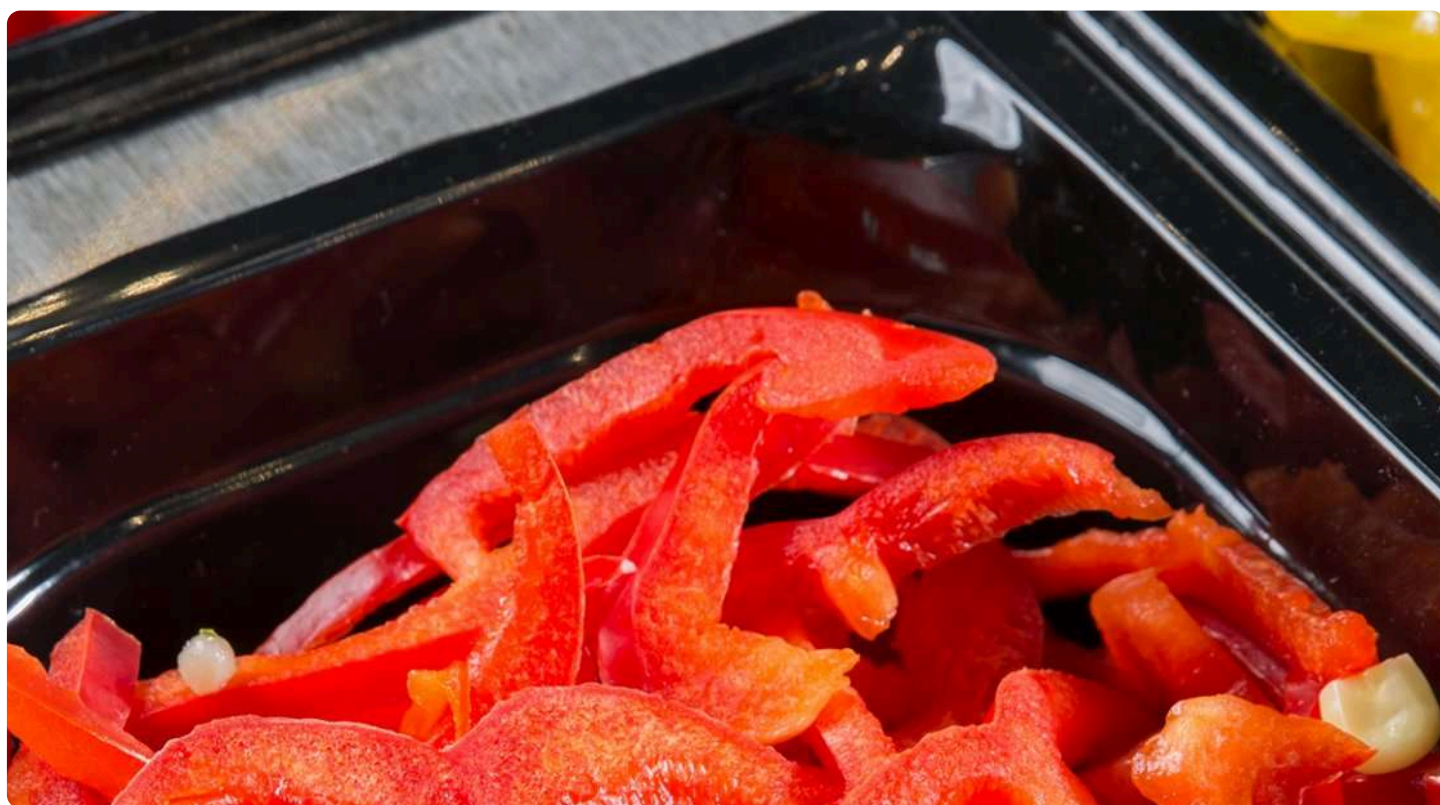
Black color creates a sleek appearance

Antijam stacking lugs allow easy separation and lifting of the pan

Ideal for storage and cold applications — not for use in steam environments

Made in the USA

NSF-certified



## PRODUCT SPECIFICATIONS

### Model Information

UPC

029419332328



**Unit Dimensions**

Overall Dimensions (IN)	6.375 x 6.937 x 4
(W) Width (IN)	6.37
(D) Depth (IN)	6.93
(H) Height (IN)	4
(W) Width (CM)	16.2
(D) Depth (CM)	17.6
(H) Height (CM)	10.2
Size	Sixth

**Volume**

Capacity, Brimful (QT)	1.6
Capacity, Brimful (L)	1.5

**Construction**

Color	Black
Construction Material	Plastic

**Case Lot Measurement**

Case Lot	6
Case Width	6.75
Case Height	7.125
Case Length	7.125
Case Lot Cube (ft.)	0.38
Case Lot Weight (lbs.)	2.2

**PRODUCT ACCESSORIES**

Name	Item #
Sixth-size Super Pan® solid clear polycarbonate cover	31600
Sixth-size Super Pan® slotted clear polycarbonate cover	32600



## Sixth-size 6-inch-deep Super Pan® clear low-temperature plastic pan

Perfect for storage and cold applications, the Super Pan clear plastic pan by Vollrath keeps your items organized and visible. The durable, clear plastic is approved for temperatures between -40°F and 210°F and provides excellent visibility. Reinforced corners add strength, while antijam stacking lugs allow easy separation and lifting of the pan. The integral frame enhances food presentation, making this an excellent addition to a wide range of commercial operations.

Clear polycarbonate construction is strong, reliable and provides excellent visibility

Low-temperature plastic is approved for temperatures between -40°F and 210°F

Reinforced corners add strength

Integral frame enhances food presentation

Antijam stacking lugs allow easy separation and lifting of the pan

Ideal for storage and cold applications — not for use in steam environments

Made in the USA

NSF-certified



## PRODUCT SPECIFICATIONS

### Model Information

UPC

029419332113

### Unit Dimensions

Overall Dimensions (IN)	6.375 x 6.937 x 6
(W) Width (IN)	6.37
(D) Depth (IN)	6.93
(H) Height (IN)	6
(W) Width (CM)	16.2
(D) Depth (CM)	17.6
(H) Height (CM)	15.2
Size	Sixth

### Volume

Capacity, Brimful (QT)	2.2
Capacity, Brimful (L)	2.1

### Construction

Color	Clear
Construction Material	Plastic

### Case Lot Measurement

Case Lot	6
Case Width	7.25
Case Height	13.5
Case Length	6.75
Case Lot Cube (ft.)	0.38
Case Lot Weight (lbs.)	2.72

### PRODUCT ACCESSORIES

Name	Item #
Sixth-size Super Pan® solid clear polycarbonate cover	31600
Sixth-size Super Pan® slotted clear polycarbonate cover	32600



## Sixth-size 6-inch-deep Super Pan® low-temperature plastic pan in black

Perfect for storage and cold applications, the Super Pan plastic pan by Vollrath keeps your items organized and visible. The durable plastic is approved for temperatures between -40°F and 210°F, and the black color creates a sleek appearance. Reinforced corners add strength, while antijam stacking lugs allow easy separation and lifting of the pan. The integral frame enhances food presentation, making this an excellent addition to a wide range of commercial operations.



Polycarbonate construction is strong and reliable

Low-temperature plastic is approved for temperatures between -40°F and 210°F

Reinforced corners add strength

Integral frame enhances food presentation

Black color creates a sleek appearance

NSF-certified

Made in the USA



## PRODUCT SPECIFICATIONS

### Model Information

UPC

029419332335

### Unit Dimensions



Overall Dimensions (IN)	6.375 x 6.937 x 6
(W) Width (IN)	6.37
(D) Depth (IN)	6.93
(H) Height (IN)	6
(W) Width (CM)	16.2
(D) Depth (CM)	17.6
(H) Height (CM)	15.2
Size	Sixth

**Volume**

Capacity, Brimful (QT)	2.2
Capacity, Brimful (L)	2.1

**Construction**

Color	Black
Construction Material	Plastic

**Case Lot Measurement**

Case Lot	6
Case Width	7.25
Case Height	13.5
Case Length	6.75
Case Lot Cube (ft.)	0.38
Case Lot Weight (lbs.)	2.72

PRODUCT **ACCESSORIES**

Name	Item #
Sixth-size Super Pan® solid clear polycarbonate cover	31600
Sixth-size Super Pan® slotted clear polycarbonate cover	32600



## Ninth-size 2 ½-inch-deep Super Pan® clear low-temperature plastic pan

Perfect for storage and cold applications, the Super Pan clear plastic pan by Vollrath keeps your items organized and visible. The durable, clear plastic is approved for temperatures between -40°F and 210°F and provides excellent visibility. Reinforced corners add strength, while antijam stacking lugs allow easy separation and lifting of the pan. The integral frame enhances food presentation, making this an excellent addition to a wide range of commercial operations.

Clear polycarbonate construction is strong, reliable and provides excellent visibility

Low-temperature plastic is approved for temperatures between -40°F and 210°F

Reinforced corners add strength

Integral frame enhances food presentation

Antijam stacking lugs allow easy separation and lifting of the pan

Antijam stacking lugs allow easy separation and lifting of the pan

Ideal for storage and cold applications — not for use in steam environments

Made in the USA

PRODUCT **SPECIFICATIONS**

**Model Information**

UPC	029419332120
-----	--------------

**Unit Dimensions**

Overall Dimensions (IN)	4.25 x 6.937 x 2.5
(W) Width (IN)	4.18
(D) Depth (IN)	6.93
(H) Height (IN)	2.5
(W) Width (CM)	10.8
(D) Depth (CM)	17.6
(H) Height (CM)	6.3
Size	Ninth

**Volume**

Capacity, Brimful (QT)	0.6
Capacity, Brimful (L)	0.6

**Construction**

Color	Clear
Construction Material	Plastic

**Case Lot Measurement**

Case Lot	6
Case Width	4.5
Case Height	7.25
Case Length	7
Case Lot Cube (ft.)	0.13
Case Lot Weight (lbs.)	1.16

PRODUCT **ACCESSORIES**

Name	Item #
Ninth-size Super Pan® solid clear polycarbonate cover	31900



## Ninth-size 2 ½-inch-deep Super Pan® low-temperature plastic pan in black

Perfect for storage and cold applications, the Super Pan plastic pan by Vollrath keeps your items organized and visible. The durable plastic is approved for temperatures between -40°F and 210°F, and the black color creates a sleek appearance. Reinforced corners add strength, while antijam stacking lugs allow easy separation and lifting of the pan. The integral frame enhances food presentation, making this an excellent addition to a wide range of commercial operations.

Polycarbonate construction is strong and reliable

Low-temperature plastic is approved for temperatures between -40°F and 210°F

Reinforced corners add strength

Integral frame enhances food presentation

Black color creates a sleek appearance

NSF-certified

Made in the USA



## PRODUCT SPECIFICATIONS

### Model Information

UPC

029419332342

### Unit Dimensions

Overall Dimensions (IN)	4.25 x 6.937 x 2.5
(W) Width (IN)	4.18
(D) Depth (IN)	6.93
(H) Height (IN)	2.5
(W) Width (CM)	10.8
(D) Depth (CM)	17.6
(H) Height (CM)	6.3
Size	Ninth

**Volume**

Capacity, Brimful (QT)	0.6
Capacity, Brimful (L)	0.6

**Construction**

Color	Black
Construction Material	Plastic

**Case Lot Measurement**

Case Lot	6
Case Width	4.625
Case Height	7.5
Case Length	7.125
Case Lot Cube (ft.)	0.14
Case Lot Weight (lbs.)	1.2

PRODUCT **ACCESSORIES**



**Name**

**Item #**

Ninth-size Super Pan® solid clear polycarbonate cover

31900



## Ninth-size 4-inch-deep Super Pan® clear low-temperature plastic pan

Perfect for storage and cold applications, the Super Pan clear plastic pan by Vollrath keeps your items organized and visible. The durable, clear plastic is approved for temperatures between -40°F and 210°F and provides excellent visibility. Reinforced corners add strength, while antijam stacking lugs allow easy separation and lifting of the pan. The integral frame enhances food presentation, making this an excellent addition to a wide range of commercial operations.

Clear polycarbonate construction is strong, reliable and provides excellent visibility

Low-temperature plastic is approved for temperatures between -40°F and 210°F

Reinforced corners add strength

- Integral frame enhances food presentation
- Black color creates a sleek appearance
- Antijam stacking lugs allow easy separation and lifting of the pan
- Ideal for storage and cold applications — not for use in steam environments
- Made in the USA

PRODUCT SPECIFICATIONS

Model Information

UPC	029419332137
-----	--------------

Unit Dimensions

Overall Dimensions (IN)	4.25 x 6.937 x 4
(W) Width (IN)	4.18
(D) Depth (IN)	6.93
(H) Height (IN)	4
(W) Width (CM)	10.8
(D) Depth (CM)	17.6
(H) Height (CM)	10.2
Size	Ninth

Volume

Capacity, Brimful (QT)	0.9
Capacity, Brimful (L)	0.9

**Construction**

Color	Clear
Construction Material	Plastic

**Case Lot Measurement**

Case Lot	6
Case Width	7.125
Case Height	11.5
Case Length	4.325
Case Lot Cube (ft.)	0.21
Case Lot Weight (lbs.)	1.5

PRODUCT **ACCESSORIES**

Name	Item #
Ninth-size Super Pan® solid clear polycarbonate cover	31900



## Ninth-size 4-inch-deep Super Pan® low-temperature plastic pan in black

Perfect for storage and cold applications, the Super Pan plastic pan by Vollrath keeps your items organized and visible. The durable plastic is approved for temperatures between -40°F and 210°F, and the black color creates a sleek appearance. Reinforced corners add strength, while antijam stacking lugs allow easy separation and lifting of the pan. The integral frame enhances food presentation, making this an excellent addition to a wide range of commercial operations.

Polycarbonate construction is strong and reliable

Low-temperature plastic is approved for temperatures between -40°F and 210°F

Reinforced corners add strength

Integral frame enhances food presentation

Made in the USA

NSF-certified

Made in the USA



## PRODUCT SPECIFICATIONS

### Model Information

UPC

029419332359

### Unit Dimensions

Overall Dimensions (IN)	4.25 x 6.937 x 4
(W) Width (IN)	4.18
(D) Depth (IN)	6.93
(H) Height (IN)	4
(W) Width (CM)	10.8
(D) Depth (CM)	17.6
(H) Height (CM)	10.2
Size	Ninth

**Volume**

Capacity, Brimful (QT)	0.9
Capacity, Brimful (L)	0.9

**Construction**

Color	Black
Construction Material	Plastic

**Case Lot Measurement**

Case Lot	6
Case Width	7.125
Case Height	4.625
Case Length	11.325
Case Lot Cube (ft.)	0.22
Case Lot Weight (lbs.)	1.56

PRODUCT **ACCESSORIES**

**Name**

**Item #**

Ninth-size Super Pan® solid clear polycarbonate cover

31900





## Full-size 2 ½-inch-deep Super Pan® high-temperature plastic pan in amber

Perfect for steam tables and microwaves, the Super Pan plastic pan by Vollrath keeps your items organized and visible. The durable plastic is approved for temperatures between -40°F and 375°F, making it ideal for hot foods. Reinforced corners add strength, while antijam stacking lugs allow easy separation and lifting of the pan. The integral frame enhances food presentation, making this an excellent addition to a wide range of commercial operations.

Plastic construction is strong, reliable and provides excellent visibility

High-temperature plastic is approved for temperatures between -40°F and 375°F

Reinforced corners add strength

Integral frame enhances food presentation

Antijam stacking lugs allow easy separation and lifting of the pan

Designed for steam tables and microwaves — not for use in ovens, combi-steamers or convection ovens

Made in the USA

NSF-certified



## PRODUCT SPECIFICATIONS

### Model Information

UPC

029419332663

**Unit Dimensions**

Overall Dimensions (IN)	12.812 x 20.875 x 2.5
(W) Width (IN)	12.81
(D) Depth (IN)	20.87
(H) Height (IN)	2.5
(W) Width (CM)	32.5
(D) Depth (CM)	53
(H) Height (CM)	6.3
Size	Full

**Volume**

Capacity, Brimful (QT)	8.8
Capacity, Brimful (L)	8.3

**Construction**

Color	Amber
Construction Material	Plastic

**Case Lot Measurement**

Case Lot	6
Case Width	13
Case Height	7.5
Case Length	21
Case Lot Cube (ft.)	1.19
Case Lot Weight (lbs.)	10.78

PRODUCT **ACCESSORIES**

Name	Item #
Full-size Super Pan® high-temperature plastic false bottom in amber	23100
Full-size Super Pan® solid high-temperature plastic cover in amber	33100
Full-size Super Pan® slotted high-temperature plastic cover in amber	34100



## Full-size 2 ½-inch-deep Super Pan® high-temperature plastic pan in black

Made of high-temperature resin, this pan can withstand temperatures of -40°F to 375°F. The sleek black color provides easy identification, and antijam stacking lugs enable easy separation and lifting of the pan. Designed for use in hot-steam tables or microwaves, this 2 ½-inch-deep pan is ideal for buffet lines, cafeterias and catered events.

Sturdy high-temperature resin

Temperature range of -40°F to 375°F

Integral frame enhances food presentation

Elegant black color

Specially designed reinforced corners

2 ½ inches deep



PRODUCT SPECIFICATIONS

Model Information

UPC	029419332793
-----	--------------

Unit Dimensions

Overall Dimensions (IN)	12.812 x 20.875 x 2.5
(W) Width (IN)	12.81
(D) Depth (IN)	20.87

(H) Height (IN)	2.5
(W) Width (CM)	32.5
(D) Depth (CM)	53
(H) Height (CM)	6.3
Size	Full

**Volume**

Capacity, Brimful (QT)	8.8
Capacity, Brimful (L)	8.3

**Construction**

Color	Black
Construction Material	Plastic
Material Type	Polymers

**Case Lot Measurement**

Case Lot	6
Case Width	13.375
Case Height	7.125
Case Length	21.375
Case Lot Cube (ft.)	1.18
Case Lot Weight (lbs.)	10.66





## Full-size 4-inch-deep Super Pan<sup>®</sup> high-temperature plastic pan in amber

Perfect for steam tables and microwaves, the Super Pan plastic pan by Vollrath keeps your items organized and visible. The durable plastic is approved for temperatures between -40°F and 375°F, making it ideal for hot foods. Reinforced corners add strength, while antijam stacking lugs allow easy separation and lifting of the pan. The integral frame enhances food presentation, making this an excellent addition to a wide range of commercial operations.



Plastic construction is strong, reliable and provides excellent visibility

High-temperature plastic is approved for temperatures between -40°F and 375°F

Reinforced corners add strength

Integral frame enhances food presentation

Antijam stacking lugs allow easy separation and lifting of the pan

Designed for steam tables and microwaves — not for use in ovens, combi-steamers or convection ovens

Made in the USA

NSF-certified



## PRODUCT SPECIFICATIONS

### Model Information

UPC

029419332670

### Unit Dimensions

Overall Dimensions (IN)	12.812 x 20.875 x 4
(W) Width (IN)	12.81
(D) Depth (IN)	20.87
(H) Height (IN)	4
(W) Width (CM)	32.5
(D) Depth (CM)	53
(H) Height (CM)	10.2
Size	Full

### Volume

Capacity, Brimful (QT)	13.6
Capacity, Brimful (L)	12.9

### Construction

Color	Amber
Construction Material	Plastic

### Case Lot Measurement

Case Lot	6
Case Width	13
Case Height	11.625
Case Length	21.125
Case Lot Cube (ft.)	1.85
Case Lot Weight (lbs.)	13.62

### PRODUCT ACCESSORIES

Name	Item #
Full-size Super Pan® high-temperature plastic false bottom in amber	23100
Full-size Super Pan® solid high-temperature plastic cover in amber	33100
Full-size Super Pan® slotted high-temperature plastic cover in amber	34100



## Full-size 4-inch-deep Super Pan<sup>®</sup> high-temperature plastic pan in black

Made of high-temperature resin, this pan can withstand temperatures of -40°F to 375°F. The sleek black color provides easy identification, and antijam stacking lugs enable easy separation and lifting of the pan. Designed for use in hot-steam tables or microwaves, this 4-inch-deep pan is ideal for buffet lines, cafeterias and catered events.

Sturdy high-temperature resin

Temperature range of -40°F to 375°F

Elegant black color

Specially designed reinforced corners

Integral frame enhances food presentation

4 inches deep



PRODUCT **SPECIFICATIONS**

**Model Information**

UPC	029419332809
-----	--------------

**Unit Dimensions**

Overall Dimensions (IN)	12.812 x 20.875 x 4
(W) Width (IN)	12.81
(D) Depth (IN)	20.87

(H) Height (IN)	4
(W) Width (CM)	32.5
(D) Depth (CM)	53
(H) Height (CM)	10.2
Size	Full

**Volume**

Capacity, Brimful (QT)	13.6
Capacity, Brimful (L)	12.9

**Construction**

Color	Black
Construction Material	Plastic
Material Type	Polymers

**Case Lot Measurement**

Case Lot	6
Case Width	13
Case Height	12
Case Length	21
Case Lot Cube (ft.)	1.9
Case Lot Weight (lbs.)	14.26



## Full-size 6-inch-deep Super Pan® high-temperature plastic pan in amber

Perfect for steam tables and microwaves, the Super Pan plastic pan by Vollrath keeps your items organized and visible. The durable plastic is approved for temperatures between -40°F and 375°F, making it ideal for hot foods. Reinforced corners add strength, while antijam stacking lugs allow easy separation and lifting of the pan. The integral frame enhances food presentation, making this an excellent addition to a wide range of commercial operations.

Plastic construction is strong, reliable and provides excellent visibility

High-temperature plastic is approved for temperatures between -40°F and 375°F

Reinforced corners add strength

Integral frame enhances food presentation

Antijam stacking lugs allow easy separation and lifting of the pan

Designed for steam tables and microwaves — not for use in ovens, combi-steamers or convection ovens

Made in the USA

NSF-certified

PRODUCT **SPECIFICATIONS**

**Model Information**

UPC	029419332687
-----	--------------

**Unit Dimensions**

Overall Dimensions (IN)	12.812 x 20.875 x 6
(W) Width (IN)	12.81
(D) Depth (IN)	20.87
(H) Height (IN)	6
(W) Width (CM)	32.5
(D) Depth (CM)	53
(H) Height (CM)	15.2
Size	Full

**Volume**

Capacity, Brimful (QT)	20.2
Capacity, Brimful (L)	19.2



### Construction

Color	Amber
Construction Material	Plastic

### Case Lot Measurement

Case Lot	6
Case Width	13
Case Height	13.5
Case Length	20.75
Case Lot Cube (ft.)	2.11
Case Lot Weight (lbs.)	15.96

### PRODUCT ACCESSORIES

Name	Item #
Full-size Super Pan® high-temperature plastic false bottom in amber	23100
Full-size Super Pan® solid high-temperature plastic cover in amber	33100
Full-size Super Pan® slotted high-temperature plastic cover in amber	34100



## Full-size 6-inch-deep Super Pan® high-temperature plastic pan in black

Perfect for steam tables and microwaves, the Super Pan plastic pan by Vollrath keeps your items organized and visible. The durable plastic is approved for temperatures between -40°F and 375°F, making it ideal for hot foods. Reinforced corners add strength, while antijam stacking lugs allow easy separation and lifting of the pan. The integral frame enhances food presentation, making this an excellent addition to a wide range of commercial operations.

Plastic construction is strong, reliable and provides excellent visibility

High-temperature plastic is approved for temperatures between -40°F and 375°F

Reinforced corners add strength

Integral frame enhances food presentation

Antijam stacking lugs allow easy separation and lifting of the pan

Designed for steam tables and microwaves — not for use in ovens, combi-steamers or convection ovens

Made in the USA

NSF-certified

PRODUCT **SPECIFICATIONS**

**Model Information**

UPC	029419332816
-----	--------------

**Unit Dimensions**

Overall Dimensions (IN)	12.812 x 20.875 x 6
(W) Width (IN)	12.81
(D) Depth (IN)	20.87
(H) Height (IN)	6
(W) Width (CM)	32.5
(D) Depth (CM)	53
(H) Height (CM)	15.2
Size	Full

**Volume**

Capacity, Brimful (QT)	20.2
Capacity, Brimful (L)	19.2

**Construction**

Color	Black
Construction Material	Plastic

**Case Lot Measurement**

Case Lot	6
Case Width	13
Case Height	13.5
Case Length	21
Case Lot Cube (ft.)	2.13
Case Lot Weight (lbs.)	16.2



## Full-size 8-inch-deep Super Pan® high-temperature plastic pan in amber

Perfect for steam tables and microwaves, the Super Pan plastic pan by Vollrath keeps your items organized and visible. The durable plastic is approved for temperatures between -40°F and 375°F, making it ideal for hot foods. Reinforced corners add strength, while antijam stacking lugs allow easy separation and lifting of the pan. The integral frame enhances food presentation, making this an excellent addition to a wide range of commercial operations.

Plastic construction is strong, reliable and provides excellent visibility

High-temperature plastic is approved for temperatures between -40°F and 375°F

Reinforced corners add strength

Integral frame enhances food presentation

Antijam stacking lugs allow easy separation and lifting of the pan

Designed for steam tables and microwaves — not for use in ovens, combi-steamers or convection ovens

Made in the USA

NSF-certified

PRODUCT **SPECIFICATIONS**

**Model Information**

UPC	029419332694
-----	--------------

**Unit Dimensions**

Overall Dimensions (IN)	12.812 x 20.875 x 8
(W) Width (IN)	12.81
(D) Depth (IN)	20.87
(H) Height (IN)	8
(W) Width (CM)	32.5
(D) Depth (CM)	53
(H) Height (CM)	20.3
Size	Full

**Volume**

Capacity, Brimful (QT)	26.5
Capacity, Brimful (L)	25.1

**Construction**

Color	Amber
Construction Material	Plastic

**Case Lot Measurement**

Case Lot	3
Case Width	13.25
Case Height	11.5
Case Length	21.25
Case Lot Cube (ft.)	1.87
Case Lot Weight (lbs.)	11.4

PRODUCT **ACCESSORIES**

Name	Item #
Full-size Super Pan® high-temperature plastic false bottom in amber	23100
Full-size Super Pan® solid high-temperature plastic cover in amber	33100
Full-size Super Pan® slotted high-temperature plastic cover in amber	34100



## Half-size 2 ½-inch-deep Super Pan® high-temperature plastic pan in amber

Perfect for steam tables and microwaves, the Super Pan plastic pan by Vollrath keeps your items organized and visible. The durable plastic is approved for temperatures between -40°F and 375°F, making it ideal for hot foods. Reinforced corners add strength, while antijam stacking lugs allow easy separation and lifting of the pan. The integral frame enhances food presentation, making this an excellent addition to a wide range of commercial operations.



Plastic construction is strong, reliable and provides excellent visibility

High-temperature plastic is approved for temperatures between -40°F and 375°F

Reinforced corners add strength

Integral frame enhances food presentation

Antijam stacking lugs allow easy separation and lifting of the pan

Designed for steam tables and microwaves — not for use in ovens, combi-steamers or convection ovens

Made in the USA

NSF-certified



## PRODUCT SPECIFICATIONS

### Model Information

UPC

029419332700

**Unit Dimensions**

Overall Dimensions (IN)	12.812 x 10.375 x 2.5
(W) Width (IN)	12.81
(D) Depth (IN)	10.37
(H) Height (IN)	2.5
(W) Width (CM)	32.5
(D) Depth (CM)	26.4
(H) Height (CM)	6.3
Size	Half

**Volume**

Capacity, Brimful (QT)	3.9
Capacity, Brimful (L)	3.7

**Construction**

Color	Amber
Construction Material	Plastic

**Case Lot Measurement**

Case Lot	6
Case Width	13
Case Height	7.375
Case Length	10.75
Case Lot Cube (ft.)	0.6
Case Lot Weight (lbs.)	4.98

**PRODUCT ACCESSORIES**

Name	Item #
Half-size Super Pan® high-temperature plastic false bottom in amber	23200
Half-size Super Pan® solid high-temperature plastic cover in amber	33200
Half-size Super Pan® slotted high-temperature plastic cover in amber	34200



## Half-size 2 ½-inch-deep Super Pan® high-temperature plastic pan in black

Made of high-temperature resin, this pan can withstand temperatures of -40°F to 375°F. The sleek black color provides easy identification, and antijam stacking lugs enable easy separation and lifting of the pan. Designed for use in hot-steam tables or microwaves, this 2 ½-inch-deep pan is ideal for buffet lines, cafeterias and catered events.

Sturdy high-temperature resin

Temperature range of -40°F to 375°F

Integral frame enhances food presentation

Elegant black color

Specially designed reinforced corners

2 ½ inches deep

Available in amber or black

Not recommended for use in ovens, combi-steamers, or convection ovens

High-temperature resin

Plastic covers and false bottoms available in amber only



## PRODUCT SPECIFICATIONS

### Model Information

UPC

029419332830

### Unit Dimensions

Overall Dimensions (IN)	12.812 x 10.375 x 2.5
(W) Width (IN)	12.81
(D) Depth (IN)	10.37
(H) Height (IN)	2.5
(W) Width (CM)	32.5
(D) Depth (CM)	26.4
(H) Height (CM)	6.3
Size	Half

**Volume**

Capacity, Brimful (QT)	3.9
Capacity, Brimful (L)	3.7

**Construction**

Color	Black
Construction Material	Plastic

**Case Lot Measurement**

Case Lot	6
Case Width	10.6
Case Height	7.6
Case Length	12.85
Case Lot Cube (ft.)	0.6
Case Lot Weight (lbs.)	5.68



## Half-size 4-inch-deep Super Pan® high-temperature plastic pan in black

Made of high-temperature resin, this pan can withstand temperatures of -40°F to 375°F. The sleek black color provides easy identification, and antijam stacking lugs enable easy separation and lifting of the pan. Designed for use in hot-steam tables or microwaves, this 4-inch-deep pan is ideal for buffet lines, cafeterias and catered events.

Sturdy high-temperature resin

Temperature range of -40°F to 375°F



Integral frame enhances food presentation

Elegant black color

Specially designed reinforced corners

4 inches deep



PRODUCT SPECIFICATIONS

Model Information

UPC	029419332847
-----	--------------

Unit Dimensions

Overall Dimensions (IN)	12.812 x 10.375 x 4
(W) Width (IN)	12.81
(D) Depth (IN)	10.37



(H) Height (IN)	4
(W) Width (CM)	32.5
(D) Depth (CM)	26.4
(H) Height (CM)	10.2
Size	Half

**Volume**

Capacity, Brimful (QT)	5.9
Capacity, Brimful (L)	5.6

**Construction**

Color	Black
Construction Material	Plastic
Material Type	Polymers

**Case Lot Measurement**

Case Lot	6
Case Width	13.125
Case Height	11.625
Case Length	10.625
Case Lot Cube (ft.)	0.94
Case Lot Weight (lbs.)	6.7



## Half-size 6-inch-deep Super Pan® high-temperature plastic pan in amber

Perfect for storage and cold applications, the Super Pan plastic pan by Vollrath keeps your items organized and visible. The durable plastic is approved for temperatures between -40°F and 375°F, making it ideal for hot foods. Reinforced corners add strength, while antijam stacking lugs allow easy separation and lifting of the pan. The integral frame enhances food presentation, making this an excellent addition to a wide range of commercial operations.

Plastic construction is strong, reliable and provides excellent visibility

High-temperature plastic is approved for temperatures between -40°F and 375°F

Reinforced corners add strength

Integral frame enhances food presentation

Anijam stacking lugs allow easy separation and lifting of the pan

Designed for steam tables and microwaves — not for use in ovens, combi-steamers or convection ovens

Made in the USA

NSF-certified

PRODUCT **SPECIFICATIONS**

**Model Information**

UPC	029419332724
-----	--------------

**Unit Dimensions**

Overall Dimensions (IN)	12.812 x 10.375 x 6
(W) Width (IN)	12.81
(D) Depth (IN)	10.37
(H) Height (IN)	6
(W) Width (CM)	32.5
(D) Depth (CM)	26.4
(H) Height (CM)	15.2
Size	Half

**Volume**

Capacity, Brimful (QT)	8.6
Capacity, Brimful (L)	8.1

**Construction**

Color	Amber
Construction Material	Plastic

**Case Lot Measurement**

Case Lot	6
Case Width	13
Case Height	13.25
Case Length	10.75
Case Lot Cube (ft.)	1.07
Case Lot Weight (lbs.)	8.3

PRODUCT **ACCESSORIES**

Name	Item #
Half-size Super Pan® high-temperature plastic false bottom in amber	23200
Half-size Super Pan® solid high-temperature plastic cover in amber	33200
Half-size Super Pan® slotted high-temperature plastic cover in amber	34200



## Half-size 6-inch-deep Super Pan® high-temperature plastic pan in black

Perfect for steam tables and microwaves, the Super Pan plastic pan by Vollrath keeps your items organized and visible. The durable plastic is approved for temperatures between -40°F and 375°F, making it ideal for hot foods. Reinforced corners add strength, while antijam stacking lugs allow easy separation and lifting of the pan. The integral frame enhances food presentation, making this an excellent addition to a wide range of commercial operations.

Plastic construction is strong, reliable and provides excellent visibility

High-temperature plastic is approved for temperatures between -40°F and 375°F

Reinforced corners add strength

Integral frame enhances food presentation

Antijam stacking lugs allow easy separation and lifting of the pan

Designed for steam tables and microwaves — not for use in ovens, combi-steamers or convection ovens

Made in the USA

NSF-certified

PRODUCT **SPECIFICATIONS**

**Model Information**

UPC	029419332854
-----	--------------

**Unit Dimensions**

Overall Dimensions (IN)	12.812 x 10.375 x 6
(W) Width (IN)	12.81
(D) Depth (IN)	10.37
(H) Height (IN)	6
(W) Width (CM)	32.5
(D) Depth (CM)	26.4
(H) Height (CM)	15.2
Size	Half

**Volume**

Capacity, Brimful (QT)	8.6
Capacity, Brimful (L)	8.1

**Construction**

Color	Black
Construction Material	Plastic

**Case Lot Measurement**

Case Lot	6
Case Width	10.625
Case Height	13.385834
Case Length	13
Case Lot Cube (ft.)	1.07
Case Lot Weight (lbs.)	7.7



## Half-size 8-inch-deep Super Pan® high-temperature plastic pan in amber

Perfect for storage and cold applications, the Super Pan plastic pan by Vollrath keeps your items organized and visible. The durable plastic is approved for temperatures between -40°F and 375°F, making it ideal for hot foods. Reinforced corners add strength, while antijam stacking lugs allow easy separation and lifting of the pan. The integral frame enhances food presentation, making this an excellent addition to a wide range of commercial operations.



Plastic construction is strong, reliable and provides excellent visibility

High-temperature plastic is approved for temperatures between -40°F and 375°F

Reinforced corners add strength

Integral frame enhances food presentation

Anijam stacking lugs allow easy separation and lifting of the pan

Designed for steam tables and microwaves — not for use in ovens, combi-steamers or convection ovens

Made in the USA

NSF-certified

PRODUCT **SPECIFICATIONS**

**Model Information**

UPC	029419332731
-----	--------------

**Unit Dimensions**

Overall Dimensions (IN)	12.812 x 10.375 x 8
(W) Width (IN)	12.81
(D) Depth (IN)	10.37
(H) Height (IN)	8
(W) Width (CM)	32.5
(D) Depth (CM)	26.4
(H) Height (CM)	20.3
Size	Half

**Volume**

Capacity, Brimful (QT)	11
Capacity, Brimful (L)	10.4

### Construction

Color	Amber
Construction Material	Plastic

### Case Lot Measurement

Case Lot	3
Case Width	13
Case Height	11.5
Case Length	10.75
Case Lot Cube (ft.)	0.47
Case Lot Weight (lbs.)	5.5

### PRODUCT ACCESSORIES

Name	Item #
Half-size Super Pan® high-temperature plastic false bottom in amber	23200
Half-size Super Pan® solid high-temperature plastic cover in amber	33200
Half-size Super Pan® slotted high-temperature plastic cover in amber	34200



## Third-size 2 ½-inch-deep Super Pan® high-temperature plastic pan in amber

Perfect for steam tables and microwaves, the Super Pan plastic pan by Vollrath keeps your items organized and visible. The durable plastic is approved for temperatures between -40°F and 375°F, making it ideal for hot foods. Reinforced corners add strength, while antijam stacking lugs allow easy separation and lifting of the pan. The integral frame enhances food presentation, making this an excellent addition to a wide range of commercial operations.

Plastic construction is strong, reliable and provides excellent visibility

High-temperature plastic is approved for temperatures between -40°F and 375°F

Reinforced corners add strength

Integral frame enhances food presentation

Antijam stacking lugs allow easy separation and lifting of the pan

Designed for steam tables and microwaves — not for use in ovens, combi-steamers or convection ovens

Made in the USA

NSF-certified

PRODUCT **SPECIFICATIONS**

**Model Information**

UPC	029419332748
-----	--------------

**Unit Dimensions**

Overall Dimensions (IN)	12.812 x 6.937 x 2.5
(W) Width (IN)	12.81
(D) Depth (IN)	6.93
(H) Height (IN)	2.5
(W) Width (CM)	32.5
(D) Depth (CM)	17.6
(H) Height (CM)	6.3
Size	Third

**Volume**

Capacity, Brimful (QT)	2.4
Capacity, Brimful (L)	2.3

**Construction**

Color	Amber
Construction Material	Plastic

**Case Lot Measurement**

Case Lot	6
Case Width	7.25
Case Height	7.5
Case Length	13
Case Lot Cube (ft.)	0.41
Case Lot Weight (lbs.)	3.48

PRODUCT **ACCESSORIES**

Name	Item #
Third-size Super Pan® high-temperature plastic false bottom in amber	23300
Third-size Super Pan® solid high-temperature plastic cover in amber	33300
Third-size Super Pan® slotted high-temperature plastic cover in amber	34300



## Third-size 2 1/2-inch-deep Super Pan<sup>®</sup> high-temperature plastic pan in black

Made of high-temperature resin, this pan can withstand temperatures of -40°F to 375°F. The sleek black color provides easy identification, and antijam stacking lugs enable easy separation and lifting of the pan. Designed for use in hot-steam tables or microwaves, this 2 1/2-inch-deep pan is ideal for buffet lines, cafeterias and catered events.

Sturdy high-temperature resin

Temperature range of -40°F to 375°F

Integral frame enhances food presentation

Elegant black color

Specially designed reinforced corners

2 ½ inches deep



PRODUCT SPECIFICATIONS

Model Information

UPC	029419332878
-----	--------------

Unit Dimensions

Overall Dimensions (IN)	12.812 x 6.937 x 2.5
(W) Width (IN)	12.81
(D) Depth (IN)	6.93

(H) Height (IN)	2.5
(W) Width (CM)	32.5
(D) Depth (CM)	17.6
(H) Height (CM)	6.3
Size	Third

**Volume**

Capacity, Brimful (QT)	2.4
Capacity, Brimful (L)	2.3

**Construction**

Color	Black
Construction Material	Plastic

**Case Lot Measurement**

Case Lot	6
Case Width	7.25
Case Height	7.283469
Case Length	13
Case Lot Cube (ft.)	0.39
Case Lot Weight (lbs.)	3.34





## Third-size 4-inch-deep Super Pan<sup>®</sup> high-temperature plastic pan in amber

Perfect for storage and cold applications, the Super Pan plastic pan by Vollrath keeps your items organized and visible. The durable plastic is approved for temperatures between -40°F and 375°F, making it ideal for hot foods. Reinforced corners add strength, while antijam stacking lugs allow easy separation and lifting of the pan. The integral frame enhances food presentation, making this an excellent addition to a wide range of commercial operations.

Plastic construction is strong, reliable and provides excellent visibility

High-temperature plastic is approved for temperatures between -40°F and 375°F

Reinforced corners add strength

Integral frame enhances food presentation

Anijam stacking lugs allow easy separation and lifting of the pan

Designed for steam tables and microwaves — not for use in ovens, combi-steamers or convection ovens

Made in the USA

NSF-certified

PRODUCT **SPECIFICATIONS**

**Model Information**

UPC	029419332755
-----	--------------

**Unit Dimensions**

Overall Dimensions (IN)	12.812 x 6.937 x 4
(W) Width (IN)	12.81
(D) Depth (IN)	6.93
(H) Height (IN)	4
(W) Width (CM)	32.5
(D) Depth (CM)	17.6
(H) Height (CM)	10.2
Size	Third

**Volume**

Capacity, Brimful (QT)	3.6
Capacity, Brimful (L)	3.4

**Construction**

Color	Amber
Construction Material	Plastic

**Case Lot Measurement**

Case Lot	6
Case Width	7.625
Case Height	11.5
Case Length	13
Case Lot Cube (ft.)	0.66
Case Lot Weight (lbs.)	4.16



## Third-size 4-inch-deep Super Pan<sup>®</sup> high-temperature plastic pan in black

Made of high-temperature resin, this pan can withstand temperatures of -40°F to 375°F. The sleek black color provides easy identification, and antijam stacking lugs enable easy separation and lifting of the pan. Designed for use in hot-steam tables or microwaves, this 4-inch-deep pan is ideal for buffet lines, cafeterias and catered events.

Sturdy high-temperature resin

Temperature range of -40°F to 375°F

Integral frame enhances food presentation

Elegant black color

Specially designed reinforced corners

4 inches deep



PRODUCT **SPECIFICATIONS**

**Model Information**

UPC	029419332885
-----	--------------

**Unit Dimensions**

Overall Dimensions (IN)	12.812 x 6.937 x 4
(W) Width (IN)	12.81
(D) Depth (IN)	6.93

(H) Height (IN)	4
(W) Width (CM)	32.5
(D) Depth (CM)	17.6
(H) Height (CM)	10.2
Size	Third

**Volume**

Capacity, Brimful (QT)	3.6
Capacity, Brimful (L)	3.4

**Construction**

Color	Black
Construction Material	Plastic

**Case Lot Measurement**

Case Lot	6
Case Width	7.25
Case Height	11.5
Case Length	13
Case Lot Cube (ft.)	0.63
Case Lot Weight (lbs.)	4.4



## Third-size 6-inch-deep Super Pan® high-temperature plastic pan in amber

Perfect for storage and cold applications, the Super Pan plastic pan by Vollrath keeps your items organized and visible. The durable plastic is approved for temperatures between -40°F and 375°F, making it ideal for hot foods. Reinforced corners add strength, while antijam stacking lugs allow easy separation and lifting of the pan. The integral frame enhances food presentation, making this an excellent addition to a wide range of commercial operations.

Plastic construction is strong, reliable and provides excellent visibility

High-temperature plastic is approved for temperatures between -40°F and 375°F

Reinforced corners add strength

Integral frame enhances food presentation

Anijam stacking lugs allow easy separation and lifting of the pan

Designed for steam tables and microwaves — not for use in ovens, combi-steamers or convection ovens

Made in the USA

NSF-certified

PRODUCT **SPECIFICATIONS**

**Model Information**

UPC	029419332762
-----	--------------

**Unit Dimensions**

Overall Dimensions (IN)	12.812 x 6.937 x 6
(W) Width (IN)	12.81
(D) Depth (IN)	6.93
(H) Height (IN)	6
(W) Width (CM)	32.5
(D) Depth (CM)	17.6
(H) Height (CM)	15.2
Size	Third

**Volume**

Capacity, Brimful (QT)	5.3
Capacity, Brimful (L)	5.1



**Construction**

Color	Amber
Construction Material	Plastic

**Case Lot Measurement**

Case Lot	6
Case Width	7.25
Case Height	13.5
Case Length	13
Case Lot Cube (ft.)	0.74
Case Lot Weight (lbs.)	5.88

PRODUCT **ACCESSORIES**

Name	Item #
Third-size Super Pan® high-temperature plastic false bottom in amber	23300
Third-size Super Pan® solid high-temperature plastic cover in amber	33300
Third-size Super Pan® slotted high-temperature plastic cover in amber	34300



## Third-size 6-inch-deep Super Pan® high-temperature plastic pan in black

Perfect for steam tables and microwaves, the Super Pan plastic pan by Vollrath keeps your items organized and visible. The durable plastic is approved for temperatures between -40°F and 375°F, making it ideal for hot foods. Reinforced corners add strength, while antijam stacking lugs allow easy separation and lifting of the pan. The integral frame enhances food presentation, making this an excellent addition to a wide range of commercial operations.

Plastic construction is strong, reliable and provides excellent visibility

High-temperature plastic is approved for temperatures between -40°F and 375°F

Reinforced corners add strength

Integral frame enhances food presentation

Antijam stacking lugs allow easy separation and lifting of the pan

Designed for steam tables and microwaves — not for use in ovens, combi-steamers or convection ovens

Made in the USA

NSF-certified

PRODUCT **SPECIFICATIONS**

**Model Information**

UPC	029419332892
-----	--------------

**Unit Dimensions**

Overall Dimensions (IN)	12.812 x 6.937 x 6
(W) Width (IN)	12.81
(D) Depth (IN)	6.93
(H) Height (IN)	6
(W) Width (CM)	32.5
(D) Depth (CM)	17.6
(H) Height (CM)	15.2
Size	Third

**Volume**

Capacity, Brimful (QT)	5.3
Capacity, Brimful (L)	5.1

**Construction**

Color	Black
Construction Material	Plastic

**Case Lot Measurement**

Case Lot	6
Case Width	7
Case Height	13.25
Case Length	13
Case Lot Cube (ft.)	0.7
Case Lot Weight (lbs.)	5.74



## Third-size 8-inch-deep Super Pan<sup>®</sup> high-temperature plastic pan in amber

Perfect for steam tables and microwaves, the Super Pan plastic pan by Vollrath keeps your items organized and visible. The durable plastic is approved for temperatures between -40°F and 375°F, making it ideal for hot foods. Reinforced corners add strength, while antijam stacking lugs allow easy separation and lifting of the pan. The integral frame enhances food presentation, making this an excellent addition to a wide range of commercial operations.

Plastic construction is strong, reliable and provides excellent visibility

High-temperature plastic is approved for temperatures between -40°F and 375°F

Reinforced corners add strength

Integral frame enhances food presentation

Antijam stacking lugs allow easy separation and lifting of the pan

Designed for steam tables and microwaves — not for use in ovens, combi-steamers or convection ovens

Made in the USA

NSF-certified

PRODUCT **SPECIFICATIONS**

**Model Information**

UPC	029419332779
-----	--------------

**Unit Dimensions**

Overall Dimensions (IN)	12.812 x 6.937 x 8
(W) Width (IN)	12.81
(D) Depth (IN)	6.93
(H) Height (IN)	8
(W) Width (CM)	32.5
(D) Depth (CM)	17.6
(H) Height (CM)	20.3
Size	Third

**Volume**

Capacity, Brimful (QT)	6.8
Capacity, Brimful (L)	6.5

**Construction**

Color	Amber
Construction Material	Plastic

**Case Lot Measurement**

Case Lot	3
Case Width	7.25
Case Height	11.25
Case Length	13.25
Case Lot Cube (ft.)	0.63
Case Lot Weight (lbs.)	4.02

PRODUCT **ACCESSORIES**

Name	Item #
Third-size Super Pan® high-temperature plastic false bottom in amber	23300
Third-size Super Pan® solid high-temperature plastic cover in amber	33300
Third-size Super Pan® slotted high-temperature plastic cover in amber	34300



## Fourth-size 2 ½-inch-deep Super Pan® high-temperature plastic pan in amber

Perfect for steam tables and microwaves, the Super Pan plastic pan by Vollrath keeps your items organized and visible. The durable plastic is approved for temperatures between -40°F and 375°F, making it ideal for hot foods. Reinforced corners add strength, while antijam stacking lugs allow easy separation and lifting of the pan. The integral frame enhances food presentation, making this an excellent addition to a wide range of commercial operations.



Plastic construction is strong, reliable and provides excellent visibility

High-temperature plastic is approved for temperatures between -40°F and 375°F

Reinforced corners add strength

Integral frame enhances food presentation

Antijam stacking lugs allow easy separation and lifting of the pan

Designed for steam tables and microwaves — not for use in ovens, combi-steamers or convection ovens

Made in the USA

NSF-certified

PRODUCT **SPECIFICATIONS**

**Model Information**

UPC	029419332960
-----	--------------

**Unit Dimensions**

Overall Dimensions (IN)	6.375 x 10.437 x 2.5
(W) Width (IN)	6.37
(D) Depth (IN)	10.37
(H) Height (IN)	2.5
(W) Width (CM)	16.2
(D) Depth (CM)	26.5
(H) Height (CM)	6.3
Size	Fourth

**Volume**

Capacity, Brimful (QT)	1.8
Capacity, Brimful (L)	1.7

**Construction**

Color	Amber
Construction Material	Plastic

**Case Lot Measurement**

Case Lot	6
Case Width	8.65
Case Height	7.5
Case Length	10.65
Case Lot Cube (ft.)	0.4
Case Lot Weight (lbs.)	2.36

PRODUCT **ACCESSORIES**

Name	Item #
Fourth-size Super Pan® high-temperature plastic false bottom in amber	23400
Fourth-size Super Pan® solid high-temperature plastic cover in amber	33400
Fourth-size Super Pan® slotted high-temperature plastic cover in amber	34400



## Fourth-size 2 ½-inch-deep Super Pan® low-temperature plastic pan in black

Perfect for storage and cold applications, the Super Pan plastic pan by Vollrath keeps your items organized and visible. The durable plastic is approved for temperatures between -40°F and 210°F, and the black color creates a sleek appearance. Reinforced corners add strength, while antijam stacking lugs allow easy separation and lifting of the pan. The integral frame enhances food presentation, making this an excellent addition to a wide range of commercial operations.

Polycarbonate construction is strong and reliable

Low-temperature plastic is approved for temperatures between -40°F and 210°F

Reinforced corners add strength

Integral frame enhances food presentation

Black color creates a sleek appearance

Anijam stacking lugs allow easy separation and lifting of the pan

Ideal for cold and storage applications — not for use in steam environments

Made in the USA

NSF-certified

PRODUCT **SPECIFICATIONS**

**Model Information**

UPC	029419333097
-----	--------------

**Unit Dimensions**

Overall Dimensions (IN)	6.375 x 10.437 x 2.5
(W) Width (IN)	6.37
(D) Depth (IN)	10.37
(H) Height (IN)	2.5
(W) Width (CM)	16.2
(D) Depth (CM)	26.5
(H) Height (CM)	6.3
Size	Fourth

**Volume**

Capacity, Brimful (QT)	1.8
Capacity, Brimful (L)	1.7

**Construction**

Color	Black
Construction Material	Plastic

**Case Lot Measurement**

Case Lot	6
Case Width	6.5
Case Height	7.5
Case Length	10.75
Case Lot Cube (ft.)	0.3
Case Lot Weight (lbs.)	2.42



## Fourth-size 4-inch-deep Super Pan® high-temperature plastic pan in amber

Perfect for steam tables and microwaves, the Super Pan plastic pan by Vollrath keeps your items organized and visible. The durable plastic is approved for temperatures between -40°F and 375°F, making it ideal for hot foods. Reinforced corners add strength, while antijam stacking lugs allow easy separation and lifting of the pan. The integral frame enhances food presentation, making this an excellent addition to a wide range of commercial operations.

Plastic construction is strong, reliable and provides excellent visibility

High-temperature plastic is approved for temperatures between -40°F and 375°F

Reinforced corners add strength

Integral frame enhances food presentation

Antijam stacking lugs allow easy separation and lifting of the pan

Designed for steam tables and microwaves — not for use in ovens, combi-steamers or convection ovens

Made in the USA

NSF-certified

PRODUCT **SPECIFICATIONS**

**Model Information**

UPC	029419333158
-----	--------------

**Unit Dimensions**

Overall Dimensions (IN)	6.375 x 10.437 x 4
(W) Width (IN)	6.37
(D) Depth (IN)	10.37
(H) Height (IN)	4
(W) Width (CM)	16.2
(D) Depth (CM)	26.5
(H) Height (CM)	10.2
Size	Fourth

**Volume**

Capacity, Brimful (QT)	2.7
Capacity, Brimful (L)	2.5

**Construction**

Color	Amber
Construction Material	Plastic

**Case Lot Measurement**

Case Lot	6
Case Width	6.75
Case Height	13.5
Case Length	10.6
Case Lot Cube (ft.)	0.56
Case Lot Weight (lbs.)	3.22

PRODUCT **ACCESSORIES**

Name	Item #
Third-size Super Pan® high-temperature plastic false bottom in amber	23300
Third-size Super Pan® solid high-temperature plastic cover in amber	33300
Third-size Super Pan® slotted high-temperature plastic cover in amber	34300





## Fourth-size 4-inch-deep Super Pan<sup>®</sup> high-temperature plastic pan in black

Perfect for steam tables and microwaves, the Super Pan plastic pan by Vollrath keeps your items organized and visible. The durable plastic is approved for temperatures between -40°F and 375°F, making it ideal for hot foods. Reinforced corners add strength, while antijam stacking lugs allow easy separation and lifting of the pan. The integral frame enhances food presentation, making this an excellent addition to a wide range of commercial operations.

Plastic construction is strong, reliable and provides excellent visibility

High-temperature plastic is approved for temperatures between -40°F and 375°F

Reinforced corners add strength

Integral frame enhances food presentation

Antijam stacking lugs allow easy separation and lifting of the pan

Designed for steam tables and microwaves — not for use in ovens, combi-steamers or convection ovens

Made in the USA

NSF-certified

PRODUCT **SPECIFICATIONS**

**Model Information**

UPC	029419333103
-----	--------------

**Unit Dimensions**

Overall Dimensions (IN)	6.375 x 10.437 x 4
(W) Width (IN)	6.37
(D) Depth (IN)	10.37
(H) Height (IN)	4
(W) Width (CM)	16.2
(D) Depth (CM)	26.5
(H) Height (CM)	10.2
Size	Fourth

**Volume**

Capacity, Brimful (QT)	2.7
Capacity, Brimful (L)	2.5

**Construction**

Color	Black
Construction Material	Plastic

**Case Lot Measurement**

Case Lot	6
Case Width	6.75
Case Height	13.25
Case Length	10.75
Case Lot Cube (ft.)	0.56
Case Lot Weight (lbs.)	3.29



## Fourth-size 6-inch-deep Super Pan® high-temperature plastic pan in amber

Perfect for steam tables and microwaves, the Super Pan plastic pan by Vollrath keeps your items organized and visible. The durable plastic is approved for temperatures between -40°F and 375°F, making it ideal for hot foods. Reinforced corners add strength, while antijam stacking lugs allow easy separation and lifting of the pan. The integral frame enhances food presentation, making this an excellent addition to a wide range of commercial operations.

Plastic construction is strong, reliable and provides excellent visibility

High-temperature plastic is approved for temperatures between -40°F and 375°F

Reinforced corners add strength

Integral frame enhances food presentation

Antijam stacking lugs allow easy separation and lifting of the pan

Designed for steam tables and microwaves — not for use in ovens, combi-steamers or convection ovens

Made in the USA

NSF-certified

PRODUCT **SPECIFICATIONS**

**Model Information**

UPC	029419333165
-----	--------------

**Unit Dimensions**

Overall Dimensions (IN)	6.375 x 10.437 x 6
(W) Width (IN)	6.37
(D) Depth (IN)	10.37
(H) Height (IN)	6
(W) Width (CM)	16.2
(D) Depth (CM)	26.5
(H) Height (CM)	15.2
Size	Fourth

**Volume**

Capacity, Brimful (QT)	3.8
Capacity, Brimful (L)	3.6

**Construction**

Color	Amber
Construction Material	Plastic

**Case Lot Measurement**

Case Lot	6
Case Width	10.75
Case Height	13.5
Case Length	6.75
Case Lot Cube (ft.)	0.57
Case Lot Weight (lbs.)	4.04

PRODUCT **ACCESSORIES**

Name	Item #
Fourth-size Super Pan® high-temperature plastic false bottom in amber	23400
Fourth-size Super Pan® solid high-temperature plastic cover in amber	33400
Fourth-size Super Pan® slotted high-temperature plastic cover in amber	34400



## Fourth-size 6-inch-deep Super Pan® high-temperature plastic pan in black

Perfect for steam tables and microwaves, the Super Pan plastic pan by Vollrath keeps your items organized and visible. The durable plastic is approved for temperatures between -40°F and 375°F, making it ideal for hot foods. Reinforced corners add strength, while antijam stacking lugs allow easy separation and lifting of the pan. The integral frame enhances food presentation, making this an excellent addition to a wide range of commercial operations.

Plastic construction is strong, reliable and provides excellent visibility

High-temperature plastic is approved for temperatures between -40°F and 375°F

Reinforced corners add strength

Integral frame enhances food presentation

Antijam stacking lugs allow easy separation and lifting of the pan

Designed for steam tables and microwaves — not for use in ovens, combi-steamers or convection ovens

Made in the USA

NSF-certified

PRODUCT **SPECIFICATIONS**

**Model Information**

UPC	029419333110
-----	--------------

**Unit Dimensions**

Overall Dimensions (IN)	6.375 x 10.437 x 6
(W) Width (IN)	6.37
(D) Depth (IN)	10.37
(H) Height (IN)	6
(W) Width (CM)	16.2
(D) Depth (CM)	26.5
(H) Height (CM)	15.2
Size	Fourth

**Volume**

Capacity, Brimful (QT)	3.8
Capacity, Brimful (L)	3.6



**Construction**

Color	Black
Construction Material	Plastic

**Case Lot Measurement**

Case Lot	6
Case Width	6.5
Case Height	13.5
Case Length	10.75
Case Lot Cube (ft.)	0.55
Case Lot Weight (lbs.)	4.12



## Half-long-size 2 ½-inch-deep Super Pan® high-temperature plastic pan in amber

Perfect for steam tables and microwaves, the Super Pan plastic pan by Vollrath keeps your items organized and visible. The durable plastic is approved for temperatures between -40°F and 375°F, making it ideal for hot foods. Reinforced corners add strength, while antijam stacking lugs allow easy separation and lifting of the pan. The integral frame enhances food presentation, making this an excellent addition to a wide range of commercial operations.

Plastic construction is strong, reliable and provides excellent visibility

High-temperature plastic is approved for temperatures between -40°F and 375°F

Reinforced corners add strength

Integral frame enhances food presentation

Antijam stacking lugs allow easy separation and lifting of the pan

Ideal for storage and cold applications — not for use in steam environments

Made in the USA

NSF-certified



## PRODUCT SPECIFICATIONS

### Model Information

UPC

029419333172

**Unit Dimensions**

Overall Dimensions (IN)	6.375 x 20.875 x 2.5
(W) Width (IN)	6.37
(D) Depth (IN)	20.87
(H) Height (IN)	2.5
(W) Width (CM)	16.2
(D) Depth (CM)	53
(H) Height (CM)	6.3
Size	Half-Long

**Volume**

Capacity, Brimful (QT)	3.8
Capacity, Brimful (L)	3.6

**Construction**

Color	Amber
Construction Material	Plastic

**Case Lot Measurement**

Case Lot	6
Case Width	7
Case Height	7.5
Case Length	21
Case Lot Cube (ft.)	0.64
Case Lot Weight (lbs.)	5.68

**PRODUCT ACCESSORIES**

**Name**

**Item #**

Half-long-size Super Pan® solid high-temperature plastic cover in amber

33500



## Half-long-size 2 ½-inch-deep Super Pan® high-temperature plastic pan in black

Perfect for steam tables and microwaves, the Super Pan plastic pan by Vollrath keeps your items organized and visible. The durable plastic is approved for temperatures between -40°F and 375°F, making it ideal for hot foods. Reinforced corners add strength, while antijam stacking lugs allow easy separation and lifting of the pan. The integral frame enhances food presentation, making this an excellent addition to a wide range of commercial operations.

Plastic construction is strong, reliable and provides excellent visibility

High-temperature plastic is approved for temperatures between -40°F and 375°F

Reinforced corners add strength

Integral frame enhances food presentation

Antijam stacking lugs allow easy separation and lifting of the pan

Designed for steam tables and microwaves — not for use in ovens, combi-steamers or convection ovens

Made in the USA

NSF-certified



## PRODUCT SPECIFICATIONS

### Model Information

UPC

029419333127

### Unit Dimensions

Overall Dimensions (IN)	6.375 x 20.875 x 2.5
(W) Width (IN)	6.37
(D) Depth (IN)	20.87
(H) Height (IN)	2.5
(W) Width (CM)	16.2
(D) Depth (CM)	53
(H) Height (CM)	6.3
Size	Half-Long

### Volume

Capacity, Brimful (QT)	3.8
Capacity, Brimful (L)	3.6

### Construction

Color	Black
Construction Material	Plastic

### Case Lot Measurement

Case Lot	6
Case Width	6.75
Case Height	7.480319
Case Length	21
Case Lot Cube (ft.)	0.62
Case Lot Weight (lbs.)	5.14





## Half-long-size 4-inch-deep Super Pan® high-temperature plastic pan in amber

Perfect for steam tables and microwaves, the Super Pan plastic pan by Vollrath keeps your items organized and visible. The durable plastic is approved for temperatures between -40°F and 375°F, making it ideal for hot foods. Reinforced corners add strength, while antijam stacking lugs allow easy separation and lifting of the pan. The integral frame enhances food presentation, making this an excellent addition to a wide range of commercial operations.

Plastic construction is strong, reliable and provides excellent visibility

High-temperature plastic is approved for temperatures between -40°F and 375°F

Reinforced corners add strength

Integral frame enhances food presentation

Antijam stacking lugs allow easy separation and lifting of the pan

Ideal for storage and cold applications — not for use in steam environments

Made in the USA

NSF-certified

PRODUCT **SPECIFICATIONS**

**Model Information**

UPC	029419333141
-----	--------------

**Unit Dimensions**

Overall Dimensions (IN)	6.375 x 20.875 x 4
(W) Width (IN)	6.37
(D) Depth (IN)	20.87
(H) Height (IN)	4
(W) Width (CM)	16.2
(D) Depth (CM)	53
(H) Height (CM)	10.2
Size	Half-Long

**Volume**

Capacity, Brimful (QT)	5.7
Capacity, Brimful (L)	5.4

**Construction**

Color	Amber
Construction Material	Plastic

**Case Lot Measurement**

Case Lot	3
Case Width	6.625
Case Height	7.325
Case Length	21
Case Lot Cube (ft.)	0.59
Case Lot Weight (lbs.)	4.0

PRODUCT **ACCESSORIES**

Name	Item #
Half-long-size Super Pan® solid high-temperature plastic cover in amber	33500



## Half-size long 4-inch-deep Super Pan<sup>®</sup> high-temperature plastic pan in black

Made of high-temperature resin, this pan can withstand temperatures of -40°F to 375°F. The sleek black color provides easy identification, and antijam stacking lugs enable easy separation and lifting of the pan. Designed for use in hot-steam tables or microwaves, this 4-inch-deep pan is ideal for buffet lines, cafeterias and catered events.

Sturdy high-temperature resin

Temperature range of -40°F to 375°F

Integral frame enhances food presentation

Elegant black color

Specially designed reinforced corners

4 inches deep



PRODUCT **SPECIFICATIONS**

**Model Information**

UPC	029419333134
-----	--------------

**Unit Dimensions**

Overall Dimensions (IN)	6.375 x 20.875 x 4
(W) Width (IN)	6.37
(D) Depth (IN)	20.87

(H) Height (IN)	4
(W) Width (CM)	16.2
(D) Depth (CM)	53
(H) Height (CM)	10.2
Size	Half-Long

**Volume**

Capacity, Brimful (QT)	5.7
Capacity, Brimful (L)	5.4

**Construction**

Color	Black
Construction Material	Plastic

**Case Lot Measurement**

Case Lot	3
Case Width	6.75
Case Height	7.283469
Case Length	21
Case Lot Cube (ft.)	0.63
Case Lot Weight (lbs.)	3.7



## Sixth-size 2 ½-inch-deep Super Pan® high-temperature plastic pan in amber

Perfect for steam tables and microwaves, the Super Pan plastic pan by Vollrath keeps your items organized and visible. The durable plastic is approved for temperatures between -40°F and 375°F, making it ideal for hot foods. Reinforced corners add strength, while antijam stacking lugs allow easy separation and lifting of the pan. The integral frame enhances food presentation, making this an excellent addition to a wide range of commercial operations.

Plastic construction is strong, reliable and provides excellent visibility

High-temperature plastic is approved for temperatures between -40°F and 375°F

Reinforced corners add strength

Integral frame enhances food presentation

Antijam stacking lugs allow easy separation and lifting of the pan

Ideal for storage and cold applications — not for use in steam environments

Made in the USA

NSF-certified



## PRODUCT SPECIFICATIONS

### Model Information

UPC

029419332786



**Unit Dimensions**

Overall Dimensions (IN)	6.375 x 6.937 x 2.5
(W) Width (IN)	6.37
(D) Depth (IN)	6.93
(H) Height (IN)	2.5
(W) Width (CM)	16.2
(D) Depth (CM)	17.6
(H) Height (CM)	6.3
Size	Sixth

**Volume**

Capacity, Brimful (QT)	1.1
Capacity, Brimful (L)	1

**Construction**

Color	Amber
Construction Material	Plastic

**Case Lot Measurement**

Case Lot	6
Case Width	7.375
Case Height	6.75
Case Length	7.75
Case Lot Cube (ft.)	0.22
Case Lot Weight (lbs.)	1.74

**PRODUCT ACCESSORIES**

Name	Item #
Sixth-size Super Pan® high-temperature plastic false bottom in amber	23600
Sixth-size Super Pan® solid high-temperature plastic cover in amber	33600
Sixth-size Super Pan® slotted high-temperature plastic cover in amber	34600



## Sixth-size 2 ½-inch-deep Super Pan® high-temperature plastic pan in black

Perfect for steam tables and microwaves, the Super Pan plastic pan by Vollrath keeps your items organized and visible. The durable plastic is approved for temperatures between -40°F and 375°F, making it ideal for hot foods. Reinforced corners add strength, while antijam stacking lugs allow easy separation and lifting of the pan. The integral frame enhances food presentation, making this an excellent addition to a wide range of commercial operations.

Plastic construction is strong, reliable and provides excellent visibility

High-temperature plastic is approved for temperatures between -40°F and 375°F

Reinforced corners add strength

Integral frame enhances food presentation

Antijam stacking lugs allow easy separation and lifting of the pan

Designed for steam tables and microwaves — not for use in ovens, combi-steamers or convection ovens

Made in the USA

NSF-certified

PRODUCT **SPECIFICATIONS**

**Model Information**

UPC	029419332915
-----	--------------

**Unit Dimensions**

Overall Dimensions (IN)	6.375 x 6.937 x 2.5
(W) Width (IN)	6.37
(D) Depth (IN)	6.93
(H) Height (IN)	2.5
(W) Width (CM)	16.2
(D) Depth (CM)	17.6
(H) Height (CM)	6.3
Size	Sixth

**Volume**

Capacity, Brimful (QT)	1.1
Capacity, Brimful (L)	1

**Construction**

Color	Black
Construction Material	Plastic

**Case Lot Measurement**

Case Lot	6
Case Width	6.75
Case Height	7.5
Case Length	7.125
Case Lot Cube (ft.)	0.21
Case Lot Weight (lbs.)	1.7



## Sixth-size 4-inch-deep Super Pan® high-temperature plastic pan in amber

Perfect for storage and cold applications, the Super Pan plastic pan by Vollrath keeps your items organized and visible. The durable plastic is approved for temperatures between -40°F and 375°F, making it ideal for hot foods. Reinforced corners add strength, while antijam stacking lugs allow easy separation and lifting of the pan. The integral frame enhances food presentation, making this an excellent addition to a wide range of commercial operations.

Plastic construction is strong, reliable and provides excellent visibility

High-temperature plastic is approved for temperatures between -40°F and 375°F

Reinforced corners add strength

Integral frame enhances food presentation

Anijam stacking lugs allow easy separation and lifting of the pan

Designed for steam tables and microwaves — not for use in ovens, combi-steamers or convection ovens

Made in the USA

NSF-certified

PRODUCT **SPECIFICATIONS**

**Model Information**

UPC	029419332922
-----	--------------

**Unit Dimensions**

Overall Dimensions (IN)	6.375 x 6.937 x 4
(W) Width (IN)	6.37
(D) Depth (IN)	6.93
(H) Height (IN)	4
(W) Width (CM)	16.2
(D) Depth (CM)	17.6
(H) Height (CM)	10.2
Size	Sixth

**Volume**

Capacity, Brimful (QT)	1.6
Capacity, Brimful (L)	1.5

## Construction

Color	Amber
Construction Material	Plastic

## Case Lot Measurement

Case Lot	6
Case Width	7
Case Height	7
Case Length	13.5
Case Lot Cube (ft.)	0.38
Case Lot Weight (lbs.)	2.3

## PRODUCT ACCESSORIES

Name	Item #
Sixth-size Super Pan® high-temperature plastic false bottom in amber	23600
Sixth-size Super Pan® solid high-temperature plastic cover in amber	33600
Sixth-size Super Pan® slotted high-temperature plastic cover in amber	34600





## Sixth-size 4-inch-deep Super Pan® high-temperature plastic pan in black

Perfect for steam tables and microwaves, the Super Pan plastic pan by Vollrath keeps your items organized and visible. The durable plastic is approved for temperatures between -40°F and 375°F, making it ideal for hot foods. Reinforced corners add strength, while antijam stacking lugs allow easy separation and lifting of the pan. The integral frame enhances food presentation, making this an excellent addition to a wide range of commercial operations.

Plastic construction is strong, reliable and provides excellent visibility

High-temperature plastic is approved for temperatures between -40°F and 375°F

Reinforced corners add strength

Integral frame enhances food presentation

Antijam stacking lugs allow easy separation and lifting of the pan

Designed for steam tables and microwaves — not for use in ovens, combi-steamers or convection ovens

Made in the USA

NSF-certified

PRODUCT **SPECIFICATIONS**

**Model Information**

UPC	029419333059
-----	--------------

**Unit Dimensions**

Overall Dimensions (IN)	6.375 x 6.937 x 4
(W) Width (IN)	6.37
(D) Depth (IN)	6.93
(H) Height (IN)	4
(W) Width (CM)	16.2
(D) Depth (CM)	17.6
(H) Height (CM)	10.2
Size	Sixth

**Volume**

Capacity, Brimful (QT)	1.6
Capacity, Brimful (L)	1.5

**Construction**

Color	Black
Construction Material	Plastic

**Case Lot Measurement**

Case Lot	6
Case Width	6.75
Case Height	13.75
Case Length	7
Case Lot Cube (ft.)	0.38
Case Lot Weight (lbs.)	2.3



## Sixth-size 6-inch-deep Super Pan® high-temperature plastic pan in amber

Perfect for storage and cold applications, the Super Pan plastic pan by Vollrath keeps your items organized and visible. The durable plastic is approved for temperatures between -40°F and 375°F, making it ideal for hot foods. Reinforced corners add strength, while antijam stacking lugs allow easy separation and lifting of the pan. The integral frame enhances food presentation, making this an excellent addition to a wide range of commercial operations.

Plastic construction is strong, reliable and provides excellent visibility

High-temperature plastic is approved for temperatures between -40°F and 375°F

Reinforced corners add strength

Integral frame enhances food presentation

Anijam stacking lugs allow easy separation and lifting of the pan

Designed for steam tables and microwaves — not for use in ovens, combi-steamers or convection ovens

Made in the USA

NSF-certified

PRODUCT **SPECIFICATIONS**

**Model Information**

UPC	029419332939
-----	--------------

**Unit Dimensions**

Overall Dimensions (IN)	6.375 x 6.937 x 6
(W) Width (IN)	6.37
(D) Depth (IN)	6.93
(H) Height (IN)	6
(W) Width (CM)	16.2
(D) Depth (CM)	17.6
(H) Height (CM)	15.2
Size	Sixth

**Volume**

Capacity, Brimful (QT)	2.2
Capacity, Brimful (L)	2.1

**Construction**

Color	Amber
Construction Material	Plastic

**Case Lot Measurement**

Case Lot	6
Case Width	6.75
Case Height	6.5
Case Length	7.25
Case Lot Cube (ft.)	0.39
Case Lot Weight (lbs.)	2.94

PRODUCT **ACCESSORIES**

Name	Item #
Sixth-size Super Pan® high-temperature plastic false bottom in amber	23600
Sixth-size Super Pan® solid high-temperature plastic cover in amber	33600
Sixth-size Super Pan® slotted high-temperature plastic cover in amber	34600



## Sixth-size 6-inch-deep Super Pan<sup>®</sup> high-temperature plastic pan in black

Perfect for steam tables and microwaves, the Super Pan plastic pan by Vollrath keeps your items organized and visible. The durable plastic is approved for temperatures between -40°F and 375°F, making it ideal for hot foods. Reinforced corners add strength, while antijam stacking lugs allow easy separation and lifting of the pan. The integral frame enhances food presentation, making this an excellent addition to a wide range of commercial operations.

Plastic construction is strong, reliable and provides excellent visibility

High-temperature plastic is approved for temperatures between -40°F and 375°F

Reinforced corners add strength

Integral frame enhances food presentation

Antijam stacking lugs allow easy separation and lifting of the pan

Designed for steam tables and microwaves — not for use in ovens, combi-steamers or convection ovens

Made in the USA

NSF-certified

PRODUCT **SPECIFICATIONS**

**Model Information**

UPC	029419333066
-----	--------------

**Unit Dimensions**

Overall Dimensions (IN)	6.375 x 6.937 x 6
(W) Width (IN)	6.37
(D) Depth (IN)	6.93
(H) Height (IN)	6
(W) Width (CM)	16.2
(D) Depth (CM)	17.6
(H) Height (CM)	15.2
Size	Sixth

**Volume**

Capacity, Brimful (QT)	2.2
Capacity, Brimful (L)	2.1



**Construction**

Color	Black
Construction Material	Plastic

**Case Lot Measurement**

Case Lot	6
Case Width	6.125
Case Height	7.125
Case Length	13.5
Case Lot Cube (ft.)	0.34
Case Lot Weight (lbs.)	2.84



## Ninth-size 2 ½-inch-deep Super Pan<sup>®</sup> high-temperature plastic pan in amber

Perfect for steam tables and microwaves, the Super Pan plastic pan by Vollrath keeps your items organized and visible. The durable plastic is approved for temperatures between -40°F and 375°F, making it ideal for hot foods. Reinforced corners add strength, while antijam stacking lugs allow easy separation and lifting of the pan. The integral frame enhances food presentation, making this an excellent addition to a wide range of commercial operations.

Plastic construction is strong, reliable and provides excellent visibility

High-temperature plastic is approved for temperatures between -40°F and 375°F

Reinforced corners add strength

Integral frame enhances food presentation

Antijam stacking lugs allow easy separation and lifting of the pan

Ideal for storage and cold applications — not for use in steam environments

Made in the USA

NSF-certified



## PRODUCT SPECIFICATIONS

### Model Information

UPC

029419332946

**Unit Dimensions**

Overall Dimensions (IN)	4.25 x 6.937 x 2.5
(W) Width (IN)	4.18
(D) Depth (IN)	6.93
(H) Height (IN)	2.5
(W) Width (CM)	10.8
(D) Depth (CM)	17.6
(H) Height (CM)	6.3
Size	Ninth

**Volume**

Capacity, Brimful (QT)	0.6
Capacity, Brimful (L)	0.6

**Construction**

Color	Amber
Construction Material	Plastic

**Case Lot Measurement**

Case Lot	6
Case Width	4.5
Case Height	7.5
Case Length	7.125
Case Lot Cube (ft.)	0.14
Case Lot Weight (lbs.)	1.22

**PRODUCT ACCESSORIES**

**Name**

**Item #**

Ninth-size Super Pan® solid high-temperature plastic cover in amber

33900



## Ninth-size 2 ½-inch-deep Super Pan<sup>®</sup> high-temperature plastic pan in black

Perfect for steam tables and microwaves, the Super Pan plastic pan by Vollrath keeps your items organized and visible. The durable plastic is approved for temperatures between -40°F and 375°F, making it ideal for hot foods. Reinforced corners add strength, while antijam stacking lugs allow easy separation and lifting of the pan. The integral frame enhances food presentation, making this an excellent addition to a wide range of commercial operations.

Plastic construction is strong, reliable and provides excellent visibility

High-temperature plastic is approved for temperatures between -40°F and 375°F

Reinforced corners add strength

Integral frame enhances food presentation

Antijam stacking lugs allow easy separation and lifting of the pan

Designed for steam tables and microwaves — not for use in ovens, combi-steamers or convection ovens

Made in the USA

NSF-certified

PRODUCT **SPECIFICATIONS**

**Model Information**

UPC	029419333073
-----	--------------

**Unit Dimensions**

Overall Dimensions (IN)	4.25 x 6.937 x 2.5
(W) Width (IN)	4.18
(D) Depth (IN)	6.93
(H) Height (IN)	2.5
(W) Width (CM)	10.8
(D) Depth (CM)	17.6
(H) Height (CM)	6.3
Size	Ninth

**Volume**

Capacity, Brimful (QT)	0.6
Capacity, Brimful (L)	0.6

**Construction**

Color	Black
Construction Material	Plastic

**Case Lot Measurement**

Case Lot	6
Case Width	4.625
Case Height	7.5
Case Length	7.125
Case Lot Cube (ft.)	0.14
Case Lot Weight (lbs.)	1.24





## Ninth-size 4-inch-deep Super Pan® high-temperature plastic pan in amber

Perfect for steam tables and microwaves, the Super Pan plastic pan by Vollrath keeps your items organized and visible. The durable plastic is approved for temperatures between -40°F and 375°F, making it ideal for hot foods. Reinforced corners add strength, while antijam stacking lugs allow easy separation and lifting of the pan. The integral frame enhances food presentation, making this an excellent addition to a wide range of commercial operations.

Plastic construction is strong, reliable and provides excellent visibility

High-temperature plastic is approved for temperatures between -40°F and 375°F

Reinforced corners add strength

Integral frame enhances food presentation

Antijam stacking lugs allow easy separation and lifting of the pan

Ideal for storage and cold applications — not for use in steam environments

Made in the USA

NSF-certified

PRODUCT **SPECIFICATIONS**

**Model Information**

UPC	029419332953
-----	--------------

**Unit Dimensions**

Overall Dimensions (IN)	4.25 x 6.937 x 4
(W) Width (IN)	4.18
(D) Depth (IN)	6.93
(H) Height (IN)	4
(W) Width (CM)	10.8
(D) Depth (CM)	17.6
(H) Height (CM)	10.2
Size	Ninth

**Volume**

Capacity, Brimful (QT)	0.9
Capacity, Brimful (L)	0.9

**Construction**

Color	Amber
Construction Material	Plastic

**Case Lot Measurement**

Case Lot	6
Case Width	7.125
Case Height	4.5
Case Length	11.5
Case Lot Cube (ft.)	0.21
Case Lot Weight (lbs.)	1.62

PRODUCT **ACCESSORIES**

Name	Item #
Ninth-size Super Pan® solid high-temperature plastic cover in amber	33900



## Ninth-size 4-inch-deep Super Pan<sup>®</sup> high-temperature plastic pan in black

Perfect for steam tables and microwaves, the Super Pan plastic pan by Vollrath keeps your items organized and visible. The durable plastic is approved for temperatures between -40°F and 375°F, making it ideal for hot foods. Reinforced corners add strength, while antijam stacking lugs allow easy separation and lifting of the pan. The integral frame enhances food presentation, making this an excellent addition to a wide range of commercial operations.

Plastic construction is strong, reliable and provides excellent visibility

High-temperature plastic is approved for temperatures between -40°F and 375°F

Reinforced corners add strength

Integral frame enhances food presentation

Antijam stacking lugs allow easy separation and lifting of the pan

Designed for steam tables and microwaves — not for use in ovens, combi-steamers or convection ovens

Made in the USA

NSF-certified

PRODUCT **SPECIFICATIONS**

**Model Information**

UPC	029419333080
-----	--------------

**Unit Dimensions**

Overall Dimensions (IN)	4.25 x 6.937 x 4
(W) Width (IN)	4.18
(D) Depth (IN)	6.93
(H) Height (IN)	4
(W) Width (CM)	10.8
(D) Depth (CM)	17.6
(H) Height (CM)	10.2
Size	Ninth

**Volume**

Capacity, Brimful (QT)	0.9
Capacity, Brimful (L)	0.9

**Construction**

Color	Black
Construction Material	Plastic

**Case Lot Measurement**

Case Lot	6
Case Width	7.125
Case Height	4.625
Case Length	11.325
Case Lot Cube (ft.)	0.22
Case Lot Weight (lbs.)	1.56



## По вопросам продаж и поддержки обращайтесь:

Алматы (727)345-47-04  
Ангарск (3955)60-70-56  
Архангельск (8182)63-90-72  
Астрахань (8512)99-46-04  
Барнаул (3852)73-04-60  
Белгород (4722)40-23-64  
Благовещенск (4162)22-76-07  
Брянск (4832)59-03-52  
Владивосток (423)249-28-31  
Владикавказ (8672)28-90-48  
Владимир (4922)49-43-18  
Волгоград (844)278-03-48  
Вологда (8172)26-41-59  
Воронеж (473)204-51-73  
Екатеринбург (343)384-55-89

Иваново (4932)77-34-06  
Ижевск (3412)26-03-58  
Иркутск (395)279-98-46  
Казань (843)206-01-48  
Калининград (4012)72-03-81  
Калуга (4842)92-23-67  
Кемерово (3842)65-04-62  
Киров (8332)68-02-04  
Коломна (4966)23-41-49  
Кострома (4942)77-07-48  
Краснодар (861)203-40-90  
Красноярск (391)204-63-61  
Курск (4712)77-13-04  
Курган (3522)50-90-47  
Липецк (4742)52-20-81

Магнитогорск (3519)55-03-13  
Москва (495)268-04-70  
Мурманск (8152)59-64-93  
Набережные Челны (8552)20-53-41  
Нижний Новгород (831)429-08-12  
Новокузнецк (3843)20-46-81  
Ноябрьск (3496)41-32-12  
Новосибирск (383)227-86-73  
Омск (3812)21-46-40  
Орел (4862)44-53-42  
Оренбург (3532)37-68-04  
Пенза (8412)22-31-16  
Петрозаводск (8142)55-98-37  
Псков (8112)59-10-37  
Пермь (342)205-81-47

Ростов-на-Дону (863)308-18-15  
Рязань (4912)46-61-64  
Самара (846)206-03-16  
Санкт-Петербург (812)309-46-40  
Саратов (845)249-38-78  
Севастополь (8692)22-31-93  
Саранск (8342)22-96-24  
Симферополь (3652)67-13-56  
Смоленск (4812)29-41-54  
Сочи (862)225-72-31  
Ставрополь (8652)20-65-13  
Сургут (3462)77-98-35  
Сыктывкар (8212)25-95-17  
Тамбов (4752)50-40-97  
Тверь (4822)63-31-35

Тольятти (8482)63-91-07  
Томск (3822)98-41-53  
Тула (4872)33-79-87  
Тюмень (3452)66-21-18  
Ульяновск (8422)24-23-59  
Улан-Удэ (3012)59-97-51  
Уфа (347)229-48-12  
Хабаровск (4212)92-98-04  
Чебоксары (8352)28-53-07  
Челябинск (351)202-03-61  
Череповец (8202)49-02-64  
Чита (3022)38-34-83  
Якутск (4112)23-90-97  
Ярославль (4852)69-52-93

**Россия** +7(495)268-04-70

**Казахстан** +7(727)345-47-04

**Беларусь** +(375)257-127-884

**Узбекистан** +998(71)205-18-59

**Киргизия** +996(312)96-26-47

эл.почта: [vha@nt-rt.ru](mailto:vha@nt-rt.ru) || сайт: <https://vollrath.nt-rt.ru/>